

Guide 170020

VIGIL Archive – Creating and Reviewing a VIGIL Archive

Guide #:	170020-1
Date:	May 16 th , 2017
Product Affected:	VIGIL Archive, VIGIL Server, VIGIL Review Station, VIGIL Client
Purpose:	This document is intended to instruct a user on the process of creating an archive using VIGIL Server’s VIGIL Archive plugin and reviewing the archive using VIGIL Review Station.

1	INTRODUCTION.....	1
2	CREATING A VIGIL ARCHIVE	1
2.1	Creating a VIGIL Archive using the VIGIL Archive Plug-In	1
2.1.1	Advanced Archive Options.....	2
2.1.2	Performing VIGIL Archive Export	3
3	REVIEWING A VIGIL ARCHIVE WITH VIGIL REVIEW STATION	3
3.1	Importing Archive	3
3.2	Reviewing a VIGIL Archive with Review Station via VIGIL Client	5
4	CONTACT INFORMATION	5

1 Introduction

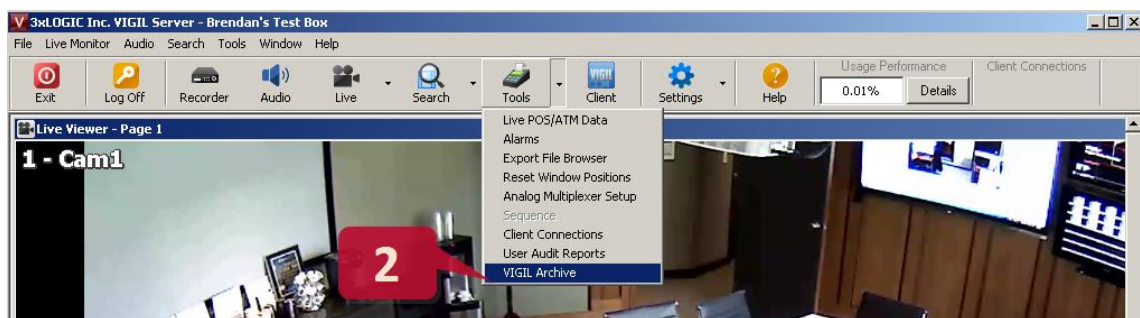
VIGIL Archive (installed automatically alongside VIGIL Server) can be used to export all or select sets of data, footage and settings from a VIGIL Server. This allows for review of data and footage on a VIGIL Review Station using identical settings to that of the data's native VIGIL Server. This results in an accurate recreation of the environment in which the data and footage was originally recorded.

2 Creating a VIGIL Archive

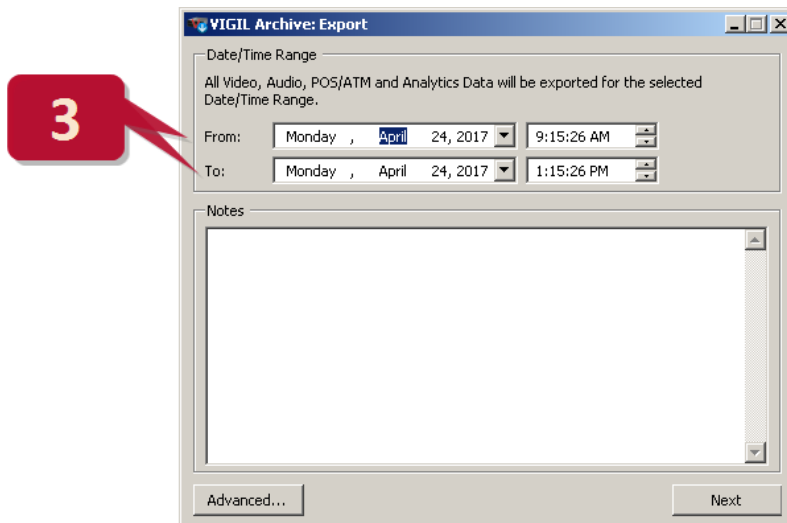
2.1 Creating a VIGIL Archive using the VIGIL Archive Plug-In

To export footage and other surveillance data (audio, POS/ATM data, user audit data) using VIGIL Archive:

1. Log in to the desired VIGIL Server.



2. Select **VIGIL Archive** from the *Tools* button context menu (or from the *Tools* top-menu). This will open the *VIGIL Archive - Export* window (pictured below).



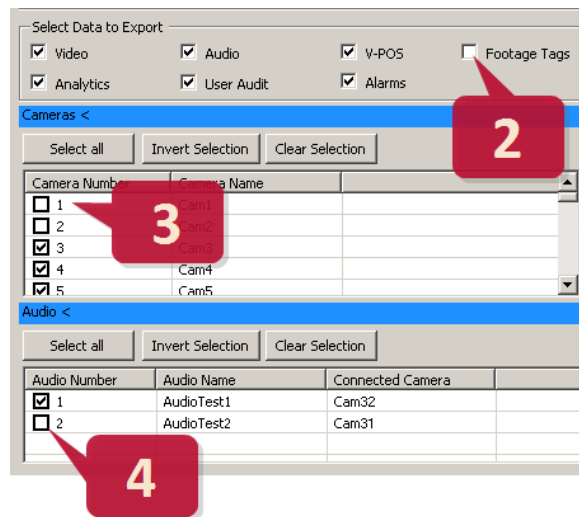
3. Set a **From** and **To** value to establish a time range for the data to be archived.

By default, all data from the VIGIL Server will be included in the archive. If desired, a user can exclude portions of data via the *Advanced* settings.

2.1.1 Advanced Archive Options

If you require only certain portions of data to be included in the archive:

1. Click the **Advanced** button. The VIGIL Archive window will expand to include advanced options.

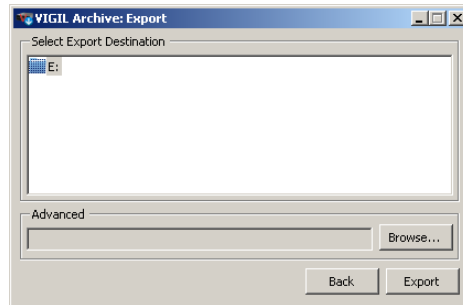


2. Toggle desired data types off to exclude them from the archive. Available data types include *Video*, *Audio*, *V-POS*, *Footage Tags*, *Analytics*, *User Audit* and *Alarms*.
3. If desired, expand the blue **Cameras** menu and toggle off cameras to exclude their footage from the archive. Other data associated with the camera will still be included.
4. If desired, expand the blue **Audio** menu and toggle off audio channels to exclude their recorded audio from the archive.

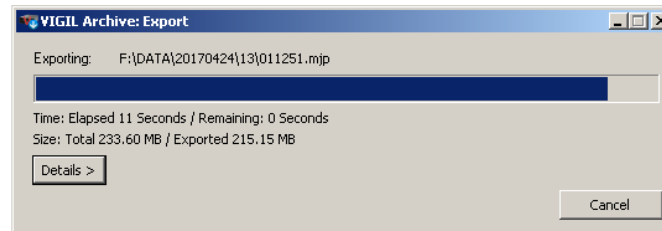
2.1.2 Performing VIGIL Archive Export

After configuring an archive time range and any desired advanced options:

1. Click the **Next** button to proceed to the archive destination selection window (pictured below).
2. Select the destination from the listed directories or click the **Browse** button to define a more specific location.



3. Once you have selected the desired destination, click **Export** to begin the archive process. Progress will be displayed as pictured below.



When the process has completed, the VIGIL Archive folder will be located in the chosen destination. The contents will now be ready for import by a VIGIL Review Station system. Move the archive to a network drive or load the folder onto external storage media (USB, external HDD) so you can easily access it from the VIGIL Review Station.

3 Reviewing a VIGIL Archive with VIGIL Review Station

3.1 Importing Archive

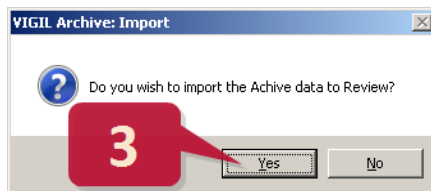


Warning: Importing data to a VIGIL Review Station will wipe all data and settings presently on the system. Be sure to back-up any vital data on your VIGIL Review Station before importing data. This data wipe is irreversible.

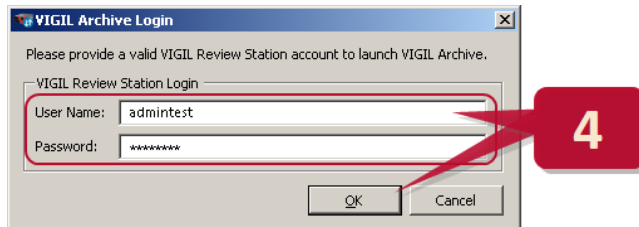
Importing a VIGIL archive onto a VIGIL Review Station is a simple process that allows you to review and access video, audio and other data from the archived VIGIL Server. An executable VIGIL Archive file comes bundled with all VIGIL Archive exports and must be launched to initiate the import process.

To import an archive, be certain you have moved the archive folder to the Review Station system or to storage media that is accessible to the Review Station and follow the below instructions:

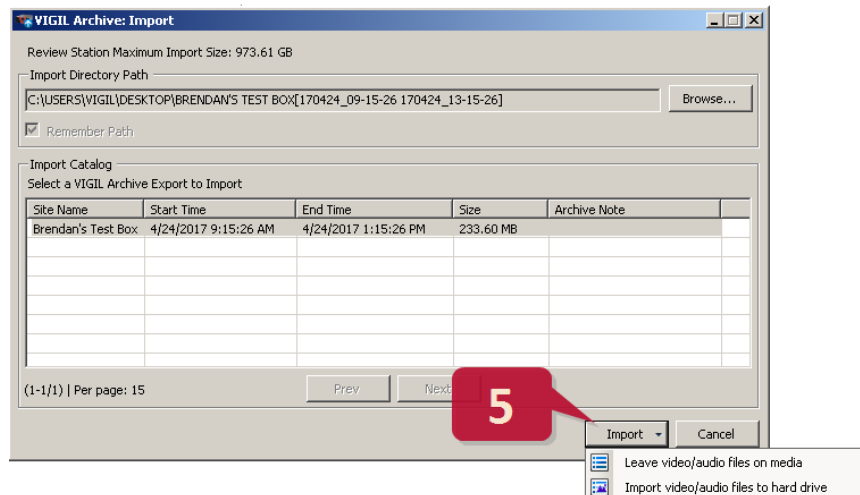
1. On the Review Station system, browse to the VIGIL Archive folder created in the previous section of this guide.
2. Open the folder and launch the VIGIL Archive executable included in the folder.
3. You will be prompted with a message asking if you would like to import the archive data for review. Select **Yes** to continue.



You will now be prompted to log in to the Review Station to launch VIGIL Archive and begin importing (pictured below).



4. Enter the appropriate credentials (these credentials will be identical to the archive's original VIGIL Server) and click **OK** to continue. The *Import* window will now deploy.

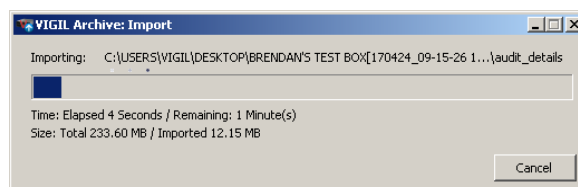


5. Choose the VIGIL Archive you wish to import and click the **Import** button.

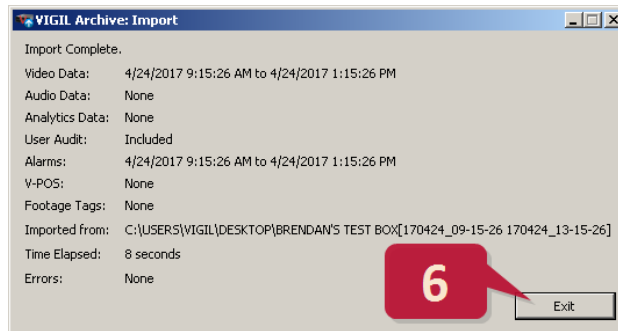
The following choices will be available:

- **Leave video/audio files on media** – Access data from the archive folder's location. Review performance is degraded when using this method however the import process is faster.
- **Import video/audio files to hard drive** – Import archive data to the system's native data folder. Review performance is improved when reviewing materials however the import process will be extended.

After making your selection, the import process will begin. Import progress will be displayed as pictured below.



Once the import process has completed, an *Import Summary* will be deployed (pictured below).



6. Click **Exit** to close the summary.

The archive is now ready for review via VIGIL Review Station.

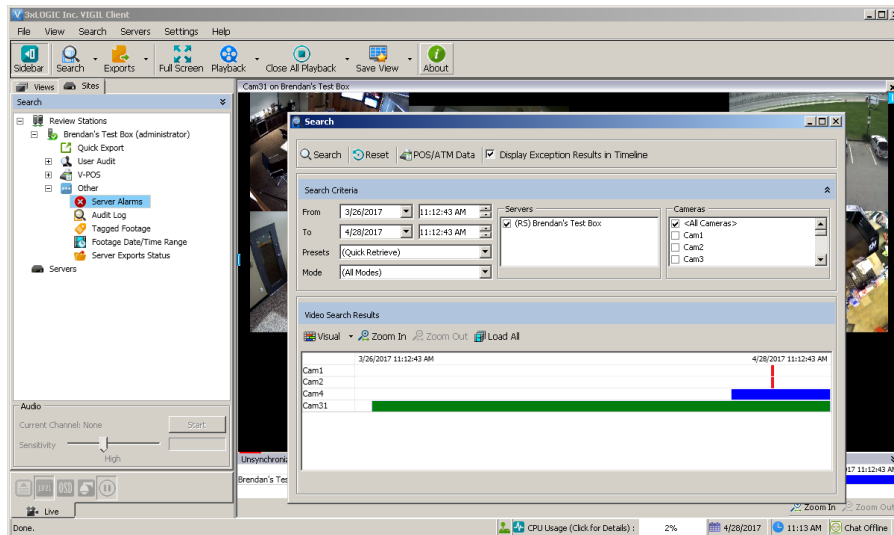
3.2 Reviewing a VIGIL Archive with Review Station via VIGIL Client

After successfully importing a VIGIL Archive, a user can review the archive's data by adding the local VIGIL Review Station to a VIGIL Client. To begin:



Note: If VIGIL Client is installed on the local Review Station system, when the import process completes, Client will be launched, the Review Station will be automatically added to VIGIL Client and a search will be automatically performed using the full date/time range of the archive's data set.

1. Add the Review Station to VIGIL Client via the same process as a traditional VIGIL Server. Please see the VIGIL Client User Guide for instructions on adding VIGIL Servers.
2. Review archive data by searching for *Playback*, *Server Alarms*, *Audit Log*, etc...



4 Contact Information

If you require more information, or if you have any questions or concerns, please contact 3xLOGIC Support:

Email: helpdesk@3xlogic.com

Online: www.3xlogic.com