

## VIGIL Software Suite v11.0

VIGIL Server software is the core program all other 3xLOGIC applications are built upon. With our Easy Setup Wizard to guide you through installation, you will be up and running in minutes. Designed with limited bandwidth in mind, Server utilizes our proprietary RapidStream Technology and Substream Motion Detection capabilities to provide high resolution over low bandwidth networks. Server is compatible with all ONVIF Profile S cameras, which includes 3xLOGIC's Time of Flight, Thermal, and V- and S-Series cameras, as well as boasting a large library of more than 150 Point-of-Sale integrations.

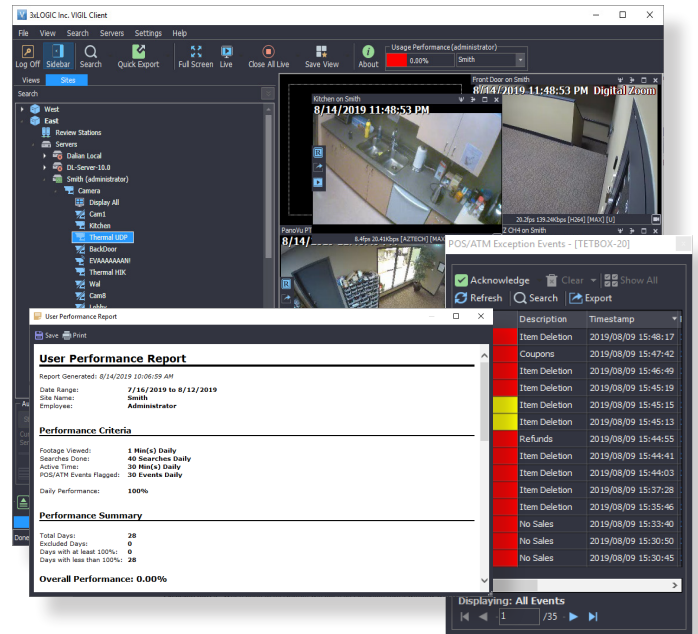
VIGIL Client gives you unrivaled access to live and recorded video from any of your networked NVRs. Advanced playback and intelligent SmartSearch™ functionality lets you identify and review events of interest quickly and easily. Seamless infinias Access Control integration allows for a complete solution encompassing the full line of 3xLOGIC's products, giving our customer's a powerful but easy-to-use surveillance and access control network.

New in VIGIL 11 includes integration of several new and upcoming cameras from 3xLOGIC's VISIX-line, Auto-View for VIGIL Client for quickly assembling layouts, a new eco-friendly flat color scheme for VIGIL Client and more.

Additional software packages are available, including POS, Video Analytics Reporting, and VCM for centralized health monitoring and management. Download our free mobile app, View Lite II for your Android or iOS device.

### New in VIGIL 11.0

- **VIGIL Client - AutoView:** An AutoView allows users to instantly assemble a camera layout using a pre-configured search filter.
- **VIGIL Client - New Flat UI Color Scheme:** The new darker theme gives VIGIL Client a more modern feel and is intended to make the software more accessible while also being more energy efficient by reducing white pixel count.
- **ANPR Utility - Expanded Camera Integration:** Automatic Number Plate Recognition (LPR) utility now integrated into VIGIL 11. Seamlessly integrates with 3rd party ANPR cameras.
- **VIGIL VCM - Improved Performance:** VCM has seen several changes under the hood to improve performance and heighten the user experience. For example, data reporting profiles can now be edited and saved independently of the VIGIL Server list, doing away with long settings save times during configuration.



### Image Resolution and Format:

**IP Resolution:** All Standard Resolutions/Megapixel/HD Megapixel/Panoramic

**IP Video Formats:** Standard 3:4, 16:9, 180° and 360°

### Minimum Hardware Requirements for VIGIL Client:

**CPU:** Intel® Core™ i3 Processor  
**RAM:** 2GB (4GB if running Virtual Switch)  
**GPU:** PCI Express 2GB

### Supported Operating Systems:

**OS:** Windows 7, Windows 8.1, Windows 10

Contact us today for a product demonstration:

1.877.3XLOGIC or [www.3xlogic.com/training-and-education](http://www.3xlogic.com/training-and-education).