

# 3xLOGIC

## Intelligent Video Surveillance

### Tech Tip 140054

# Adjusting Sensor Position on Arecont 180° Panoramic Cameras

<b>Tech Tip Number:</b>	140054-1
<b>Date:</b>	September 17, 2014
<b>Product Involved:</b>	VIGIL Server, Arecont 180° Cameras
<b>Purpose:</b>	The purpose of this guide is to educate a user on the process of adjusting an Arecont 180° panoramic camera's sensor positions.

### Table of Contents

1 INTRODUCTION.....	1
2 ADJUSTING SENSOR POSITIONS .....	1
3 CONTACT INFORMATION .....	3

### 1 Introduction

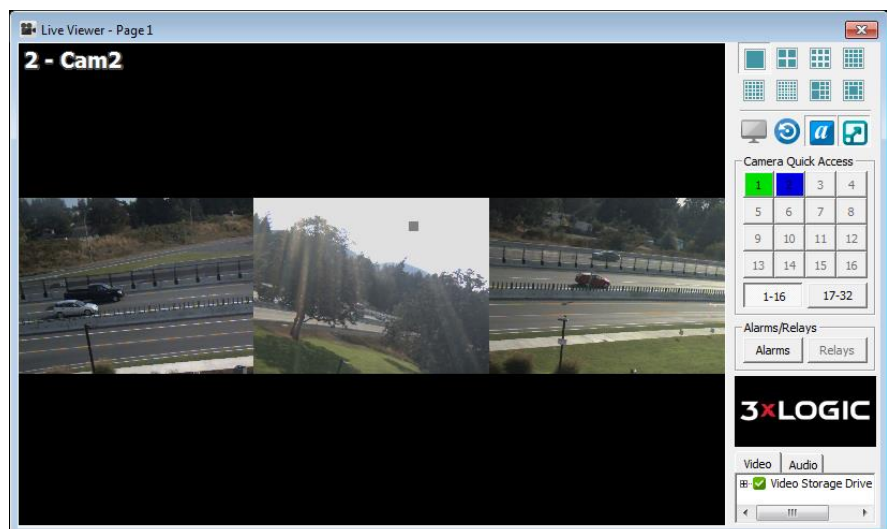
The Arecont 180° Stitched Panorama Camera features an array of sensors that greatly affect picture quality. If the quality of a stream from an Arecont 180° Stitched Panorama Camera is less than desirable, a user may adjust sensor positions to attempt to improve the cameras image output.


Proceed to the following section of this guide for information on adjusting the sensor positions.

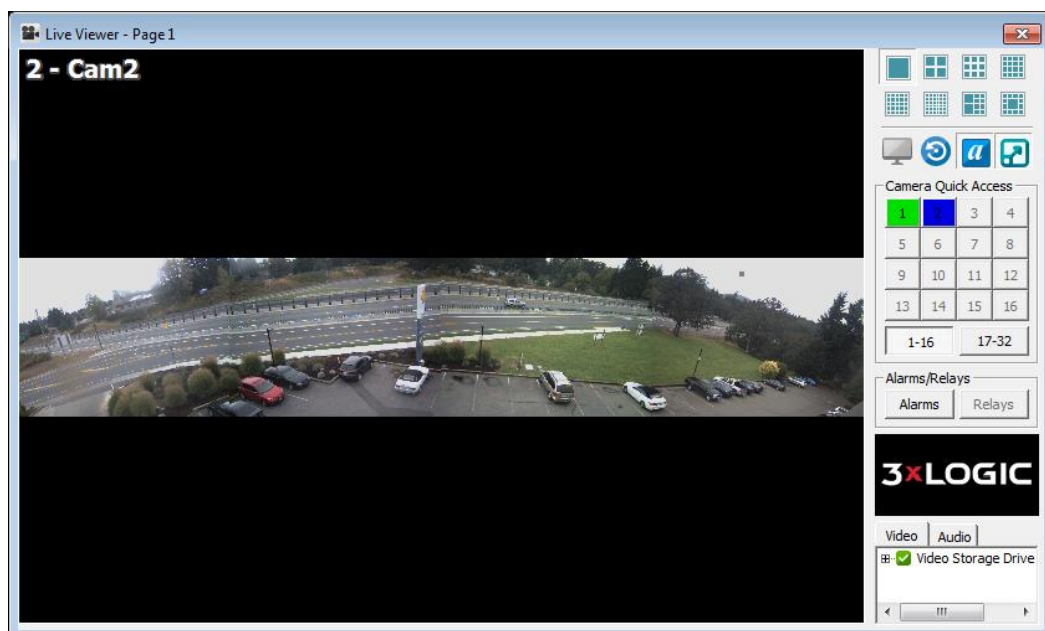
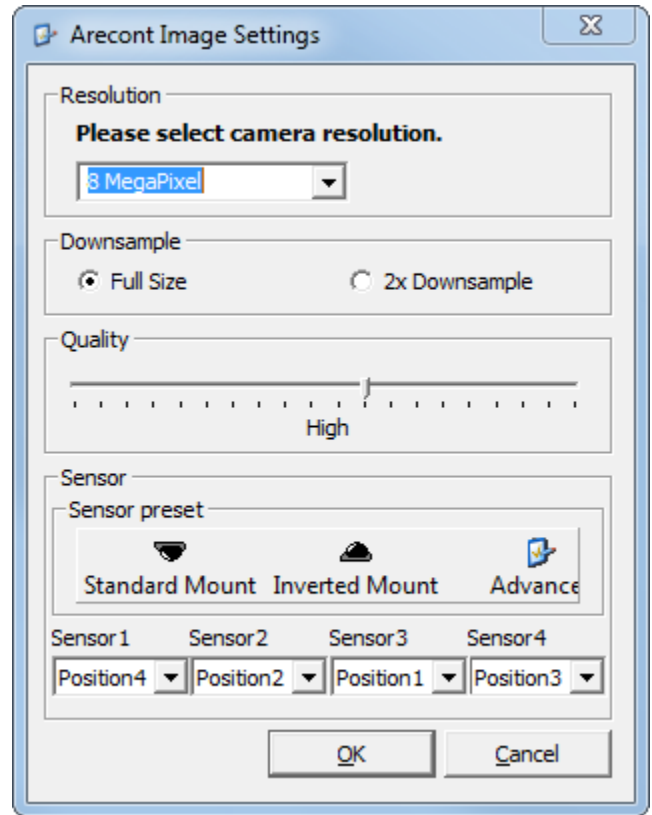
### 2 Adjusting Sensor Positions

In rare cases, users have reported, after unboxing, installing on their surveillance network and configuring within VIGIL Server, the Arecont 180° Stitched Panorama Camera providing an incorrect or undesirable image(such as the example pictured right.)

To adjust the Arecont 180° Stitched Panorama Camera Sensor positions:



1. Click *Settings* in the VIGIL Server Icon Menu toolbar.
2. Select the Camera Setup tab (this tab should be selected by default.)
3. Select the Camera channel belonging to the Arecont 180° Stitched Panorama Camera.
4. Click the *Settings* button located in the Network Camera section.
5. Confirm that either *JPEG – Stitched Panorama V1* or *JPEG – Stitched Panorama V2* is selected in the *Stream Type* field.
6. Click the  button next to the *URL* field to open the *Arecont Image Settings* window (pictured right.)
7. Select the applicable *Sensor Preset* (*Standard* or *Inverted*) depending on the physical installation of the camera.
8. For further functionality, users may click the *Advanced* button and manually assign the four separate sensor positions. 3xLOGIC recommends using a *Sensor Preset* for base-level users.
9. Click OK on all open windows to apply the new settings. The Arecont 180° Stitched Panorama Camera stream should now appear correct (pictured below), in accordance with the selected *Sensor Preset*.



### **3 Contact Information**

If you require more information, or if you have any questions or concerns, please contact

3xLOGIC Technical Support:

Toll Free (North America): (877) 3XLOGIC or (877) 395-6442

Email: [support@3xlogic.com](mailto:support@3xlogic.com)

Online: [www.3xlogic.com](http://www.3xlogic.com)