



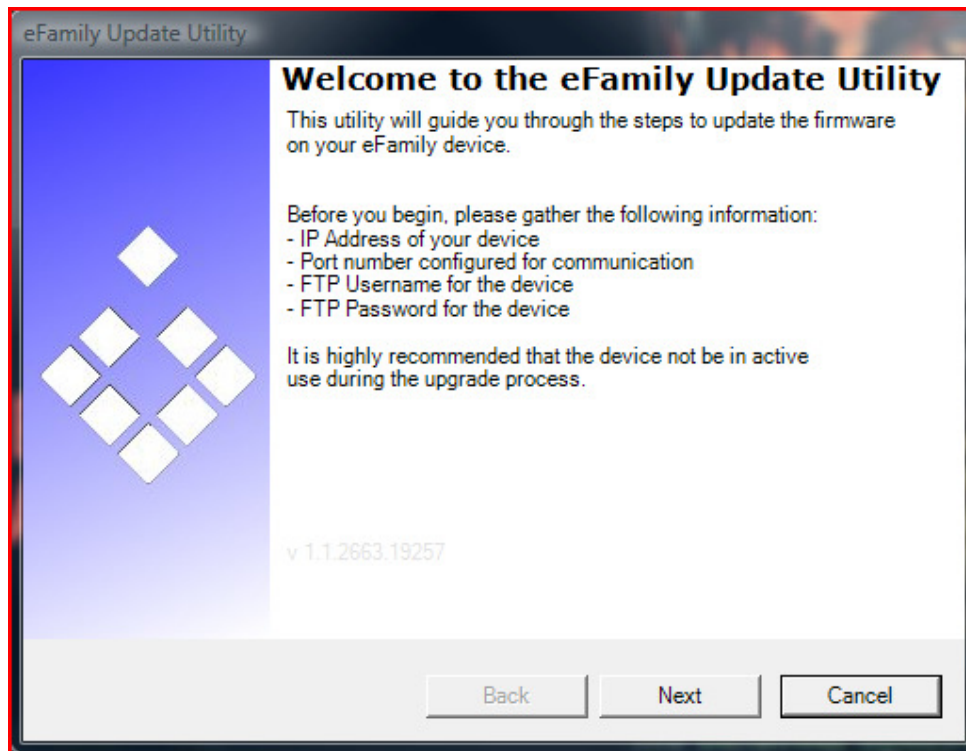
IntelliM

Technical Support Center

Backing Up In Web Mode

Written By: Barry Slinker Rev: Sept 30th, 2009

1. Bring up the E-Family Update Utility



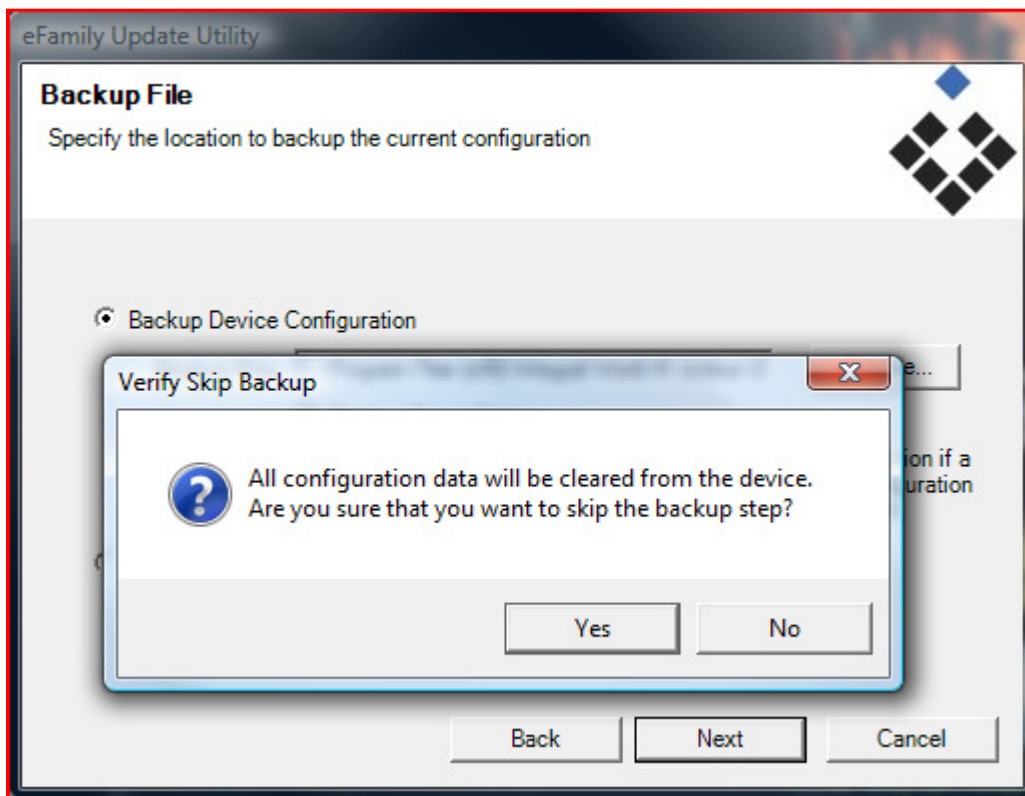
- Put in the IP address of the eIDC controller that you want to restore your back up to.

The screenshot shows the 'eFamily Update Utility' window with the 'Device Connection Information' section. The title bar reads 'eFamily Update Utility'. Below the title, the text says 'Device Connection Information' and 'Connection information for your eFamily device'. There is a logo in the top right corner consisting of a diamond shape made of smaller diamonds. The form contains four input fields: 'Device IP' with the value '10.1.1.73' and a red warning icon to its right; 'TCP Port' with the value '18777'; 'FTP Username' with the value 'admin'; and 'FTP Password' with masked characters '*****'. At the bottom, there are three buttons: 'Back', 'Next', and 'Cancel'.

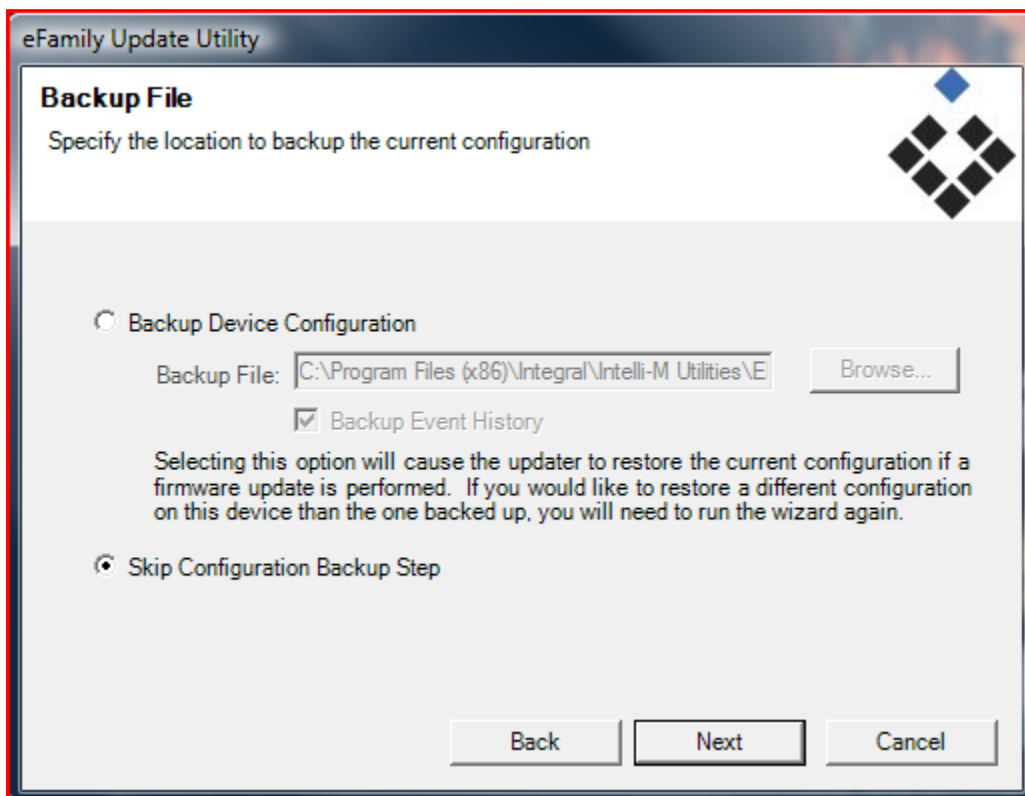
- Answer No to this question

The screenshot shows the 'eFamily Update Utility' window with the 'Backup File' section. The title bar reads 'eFamily Update Utility'. Below the title, the text says 'Backup File' and 'Specify the location to backup the current configuration'. There is a logo in the top right corner. A smaller dialog box titled 'Backup Configuration' is overlaid on top. It has a question mark icon and the text: 'The update process will overwrite the configuration on your device. This will destroy any cardholders, schedules, services, or other items you may have configured. Would you like to backup the configuration on the device?'. At the bottom of this dialog are 'Yes' and 'No' buttons. At the bottom of the main window, there are three buttons: 'Back', 'Next', and 'Cancel'.

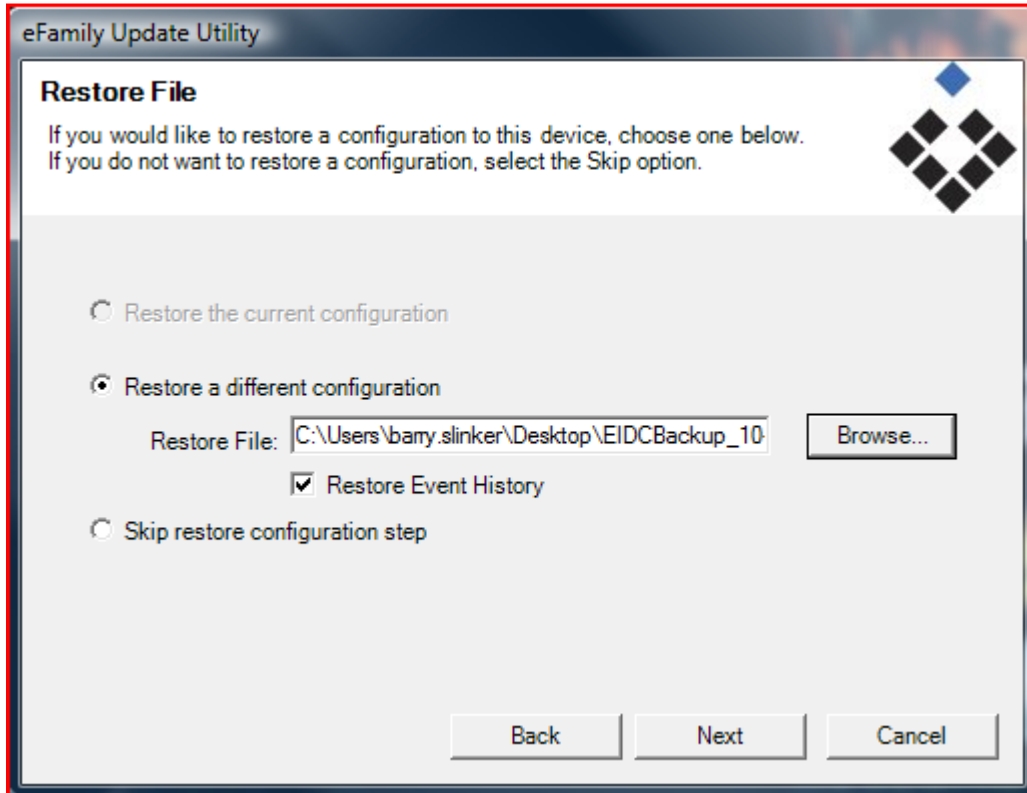
4. Answer Yes to this question.



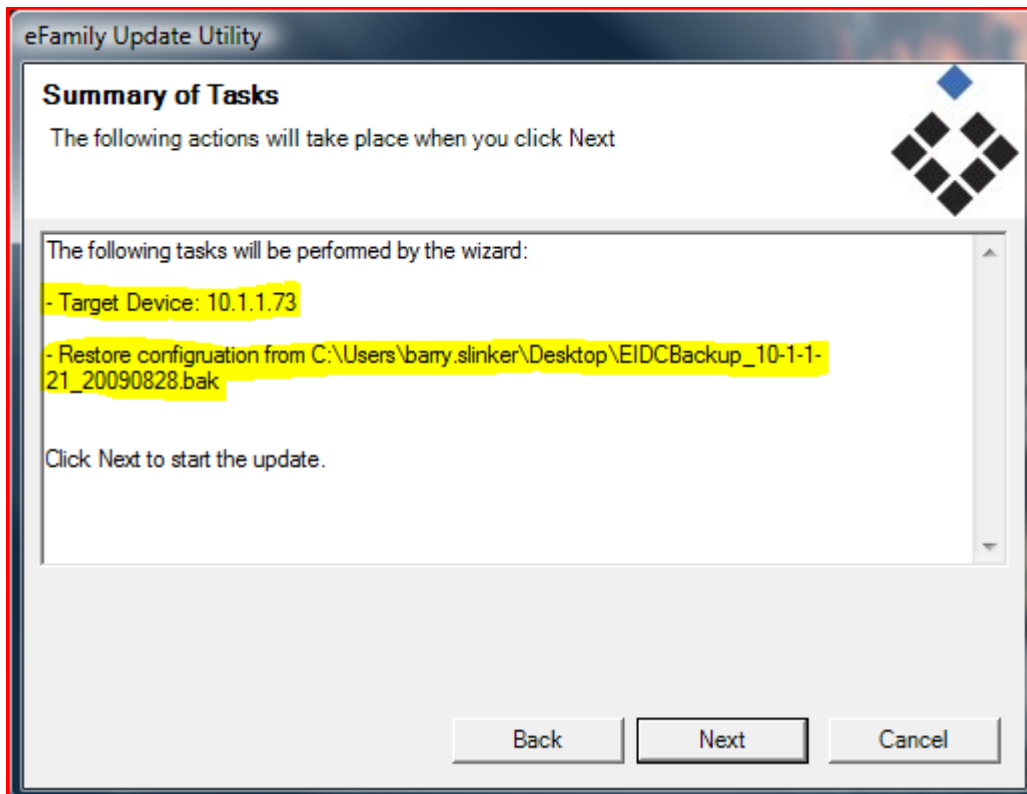
5. Click Next



6. Browse to the location where your backup is located.
(If you've backed up the Event History and you wish to restore it, make sure the check mark is in the box below)



7. Verify your Summary of Tasks



8. Once the backup is completed, you will see the following screen. Backup is complete! Click Finish to exit.

