

3XLOGIC

Tech Tip 090028

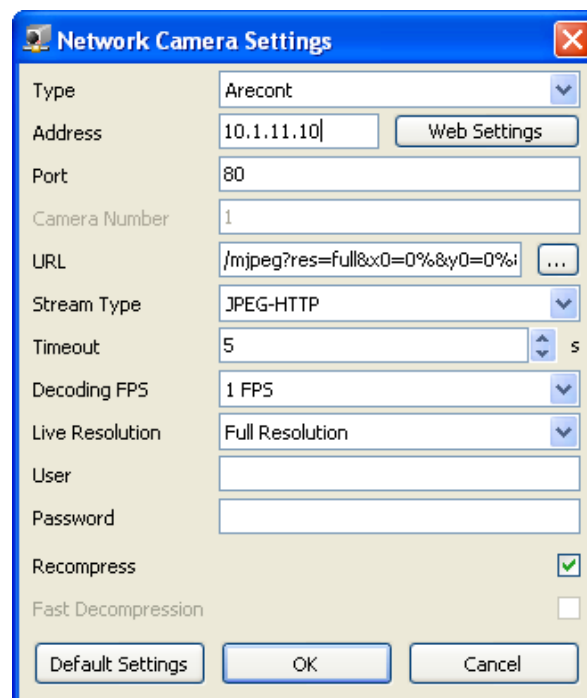
Arecont Setup Guide

Tech Tip Number:	090028
Date:	October 2, 2010
Product Affected:	Vigil Server version 5.00.0934 or higher.
Purpose:	This bulletin helps users to find the model number and resolution of their Arecont network camera and how to configure the camera in Vigil Server based on that information.

1 Setting up Arecont Cameras with the Correct Stream Type

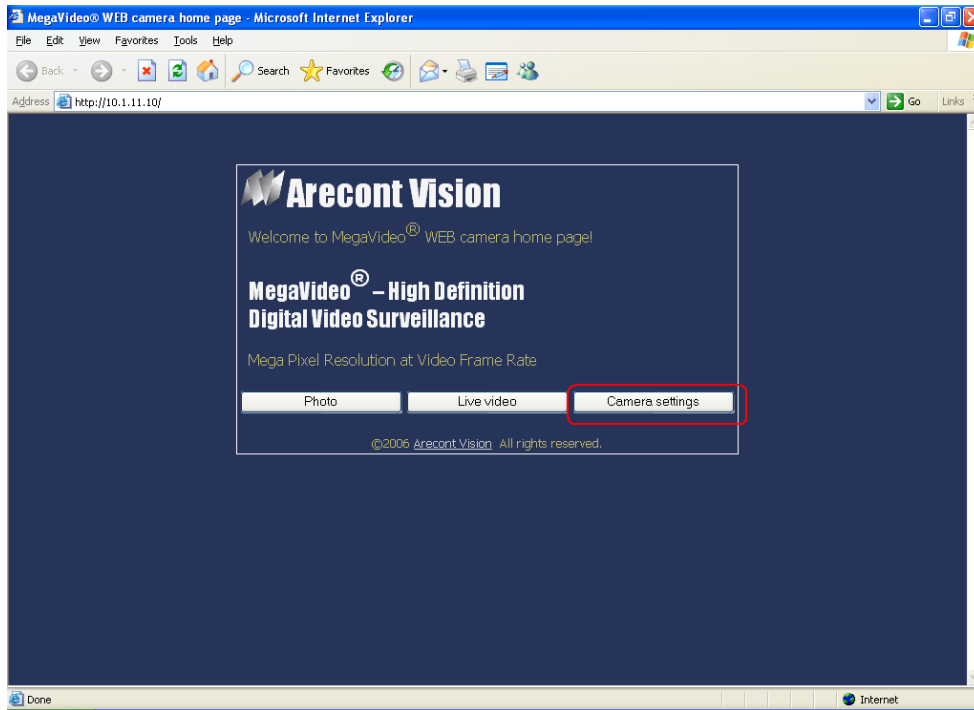
Take the following steps to properly add and configure your Arecont camera:

1. Go to Vigil Server DVR *Settings* > *Camera Setup* tab and select the channel you would like to setup the Arecont camera on.
2. Check the *Network Camera* feature and click the *Settings...* button to open the Network Camera Settings window.

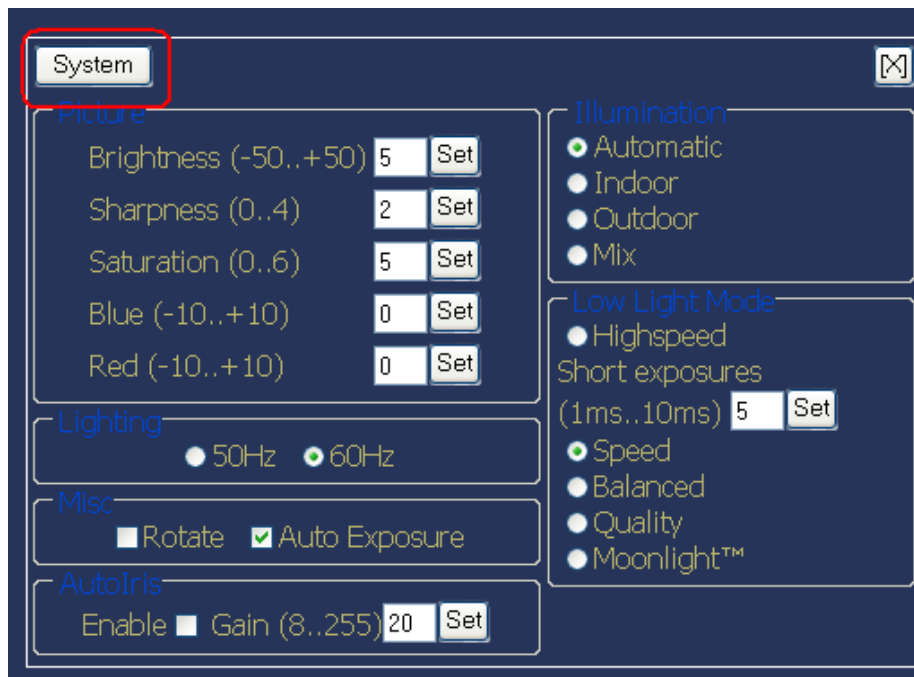


For a complete listing of Service Bulletins, please go to <http://www.3xlogic.com>

3. In the Type drop-down menu, select "Arecont".
4. Type in the IP address of the Arecont camera in the *Address* box.
5. Click the *Web Settings* button to open the Arecont camera settings in Internet Explorer.
- 6a. If this window displays, take the following steps i-iii. If this window does not display, move on to step 6b.



- i. Click the *Camera Settings* button.
- ii. Click the *System* button.



iii. In the *Camera type* box, you will see a four digit number. This is the camera model number; please make a note of it.

System

Camera information

Camera type	1300
Firmware	62704
JPEG engine	61601
Net version	50712
MAC address	00-50-C2-3B-62-08

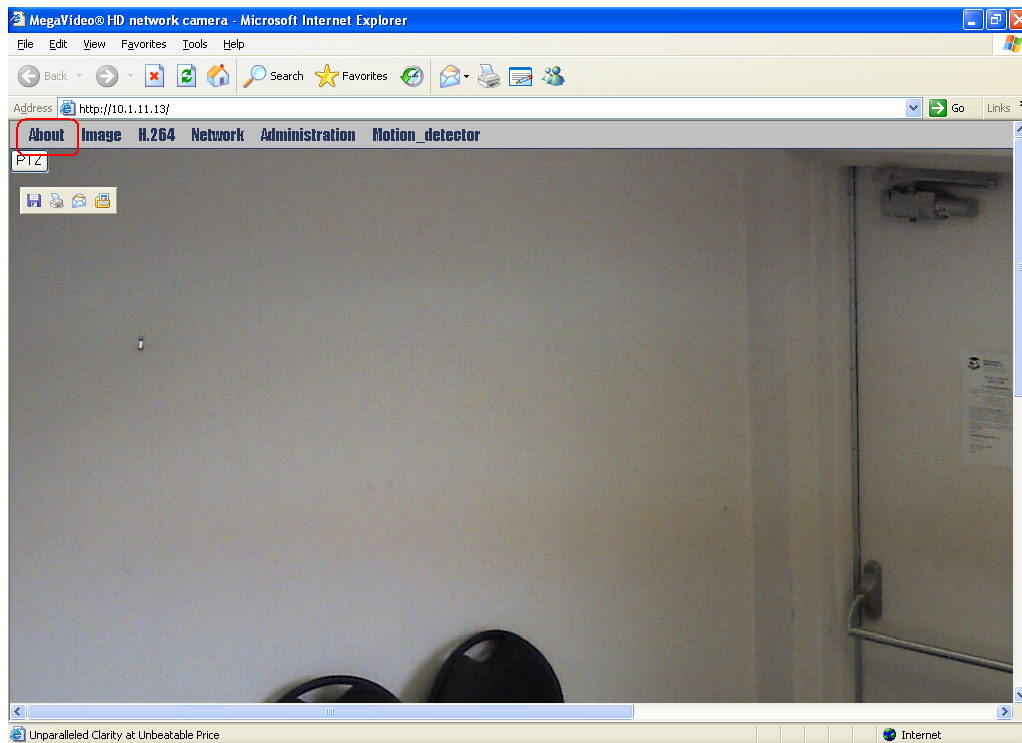
Administration

User **admin** password
confirmation

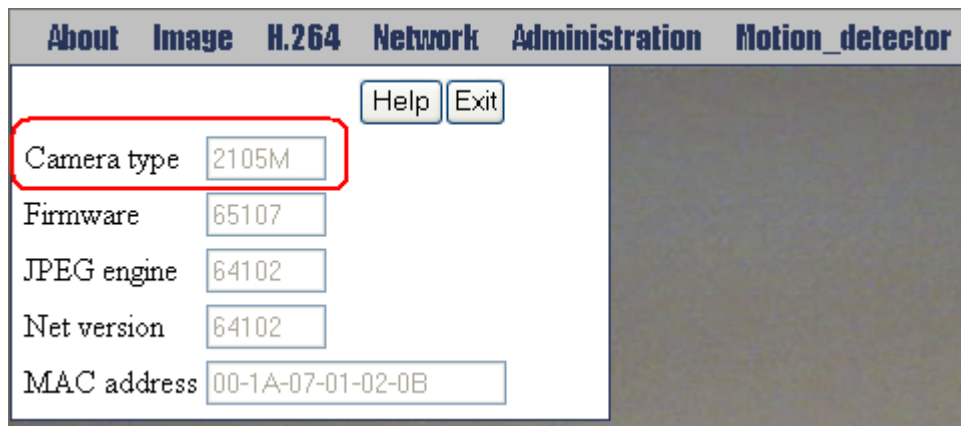
User **viewer** password
confirmation

©2006 Arecont Vision All rights reserved.

6b. If this window displays, take the following steps i-ii. If you have already completed step 6a, then carry on to step 7.



- i. Click *About*.
- ii. In the *Camera type* box, you will see a four digit number. This is the camera model number; please make a note of it.

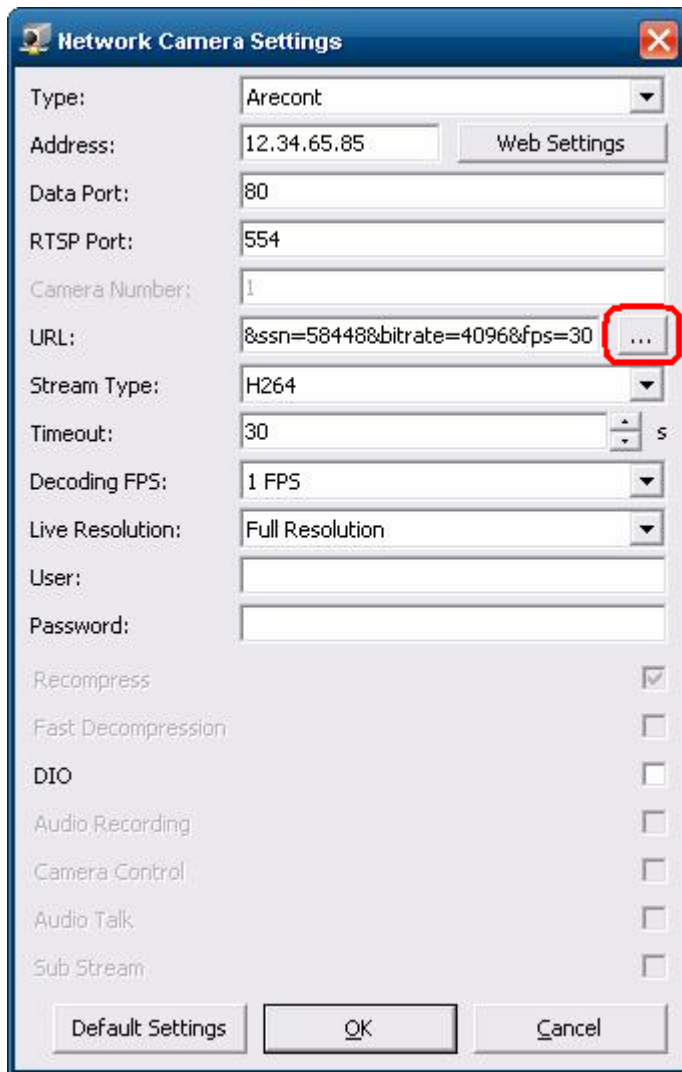


7. Now, return to the Vigil Server Network Camera Settings window.
8. If your model number ends with the number 5, then the camera supports H264 streaming. Select "H264" in the *Stream Type* drop-down menu.

If your model number ends with the number 0, then the camera does not support H264 streaming. Select "JPEG-HTTP" in the *Stream Type* drop-down menu.
9. Click *OK* to the Network Camera Settings window, and then click *Apply* to the DVR Settings window.
10. Look at the camera preview in the DVR Settings > Camera Setup tab.
If the camera image looks as expected, then the configuration is complete. If the camera image has the wrong aspect ratio, then continue to Section 2: Adjusting the Camera Image.

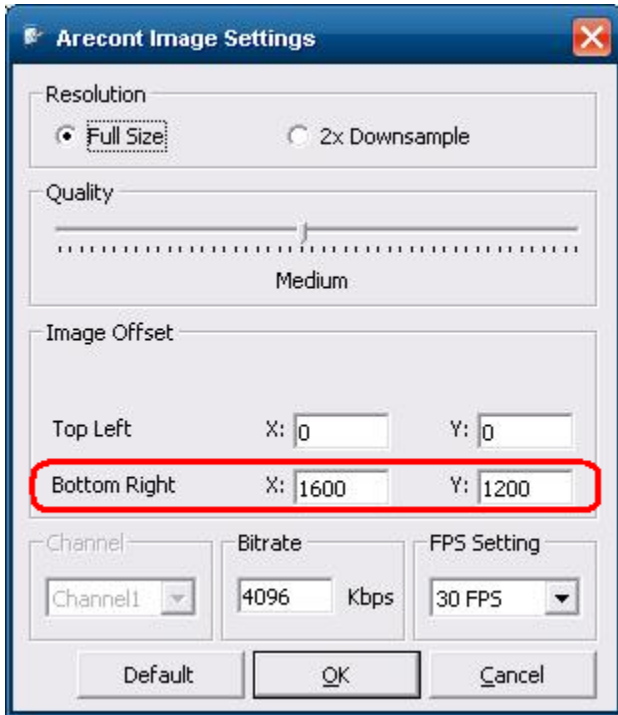
2 Adjusting the Camera Image

1. Click the *Settings...* button to open the Network Camera Settings window.
2. Click the ... button beside the *URL* box to open the Arecont Image Settings window.



3. For JPEG-HTTP cameras, in the *Image Offset* section, select "By Pixels".

H264 Stream Type:



JPEG-HTTP Stream Type:

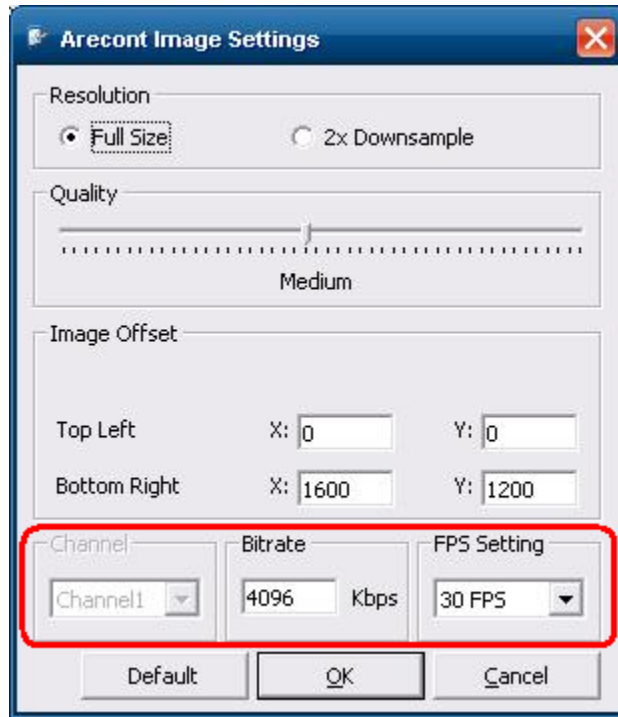


- In the *Bottom Right X* and *Y* boxes, enter the correct values for your Arecont model. These numbers depend on how many megapixels your camera model has. Please see the chart below for the correct X and Y values for each Arecont model.

For your convenience, Arecont camera models are listed below showing the recommended *Stream Type*, megapixels and Image Offset values:

Model #	Recommended Stream Type	Megapixels	Image Offset Values: X, Y
AV1355 Series	H264	1.3	1280, 1024
AV2155 Series	H264	2	1600, 1200
AV3155 Series	H264	3	2048, 1536
AV5155 Series	H264	5	2592, 1920
AV1300 Series	JPEG-HTTP	1.3	1280, 1024
AV1305 Series	H264	1.3	1280, 1024
AV2100 Series	JPEG-HTTP	2	1600, 1200
AV2105 Series	H264	2	1600, 1200
AV3100 Series	JPEG-HTTP	3	2048, 1536
AV3105 Series	H264	3	2048, 1536
AV5100 Series	JPEG-HTTP	5	2592, 1920
AV5105 Series	H264	5	2592, 1920
AV8180	JPEG-AV8180/8360	8	N/A
AV8185	JPEG-AV8180/8360	8	N/A
AV8360	JPEG-AV8180/8360	8	N/A
AV8365	JPEG-AV8180/8360	8	N/A

5. For H264 stream cameras, set the Channel, Bitrate and FPS Settings in the *Arecont Image Settings* window. In the *Camera Setup* tab, set the camera recording speed to "Set by Camera".



If you are experiencing any problems, please use the contact information below to contact technical support for assistance.

Contact Information

If you require more information, or if you have any questions or concerns, please contact 3xLogic Technical Support:

Toll Free (North America): 1-877-3XLOGIC (1-877-395-6442)

Email: support@3xlogic.com

Online: www.3xlogic.com

For a complete listing of Service Bulletins, please go to <http://www.3xlogic.com>