

Tech Tip 090031

Issue Description

Tech Tip Number:	090031
Date:	November 2, 2009
Product Affected:	Vigil Server version 6.00 and higher
Purpose:	This bulletin provides instructions on how to use the DVR Backup Utility.

Situation: The DVR Backup Utility is an application installed with Vigil Server that allows administrators to backup and log large amounts of raw video footage. The backups are logged with the footage dates, export date, export location and media serial number for easy tracking.



Note: The DVR Backup Utility only copies raw video records that are saved when the DVR records footage to a video storage drive. The DVR Backup Utility will copy these files to a local hard drive, removable drive, or DVD as is and will not alter the files in any way. The utility is designed to keep track of backups so that administrators know what days of video storage have been backed up and which days have not. The utility is not designed for users to play back large chunks of video footage.



Note: If you would like to rebuild the footage database using the footage backed up by the DVR Backup Utility, please contact 3xLogic using the contact information at the bottom of this document.

Contents

1 USING THE DVR BACKUP UTILITY.....	2
1.1 ADDING A DESTINATION	2
1.2 SELECTING DAYS OF VIDEO FOR BACKUP	2
1.3 BACKING UP DAYS OF FOOTAGE	3
1.4 REVIEWING BACKUPS	3
1.5 PLAYING BACKED UP VIDEO FOOTAGE	3
2 QUICK OVERVIEW OF THE DVR BACKUP UTILITY.....	4
CONTACT INFORMATION	6

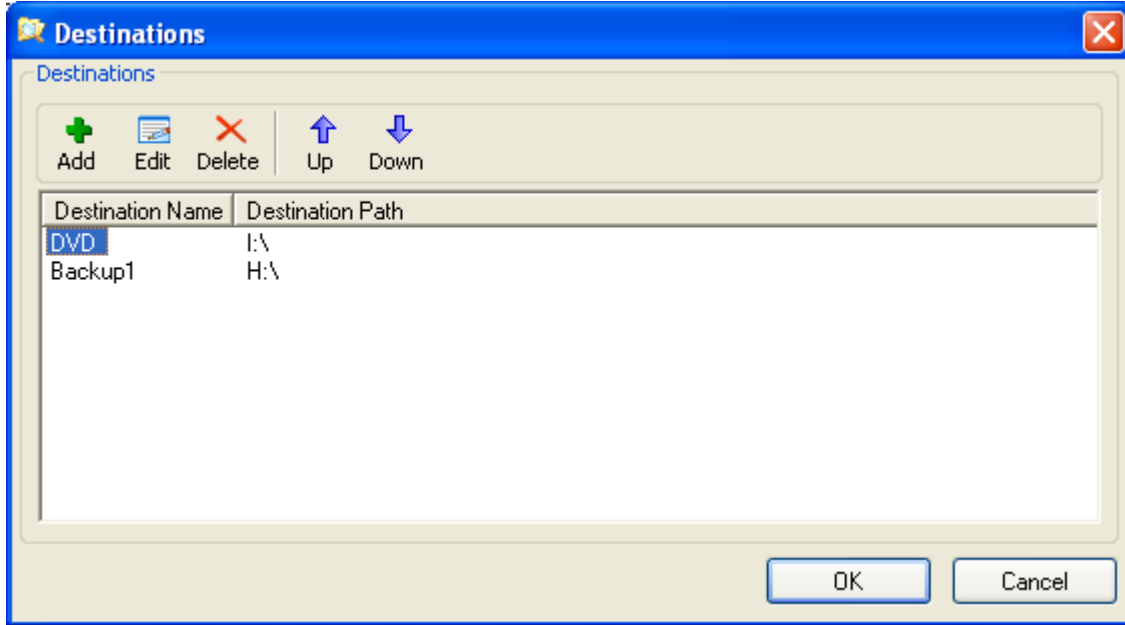
1 Using the DVR Backup Utility

1.1 Adding a Destination

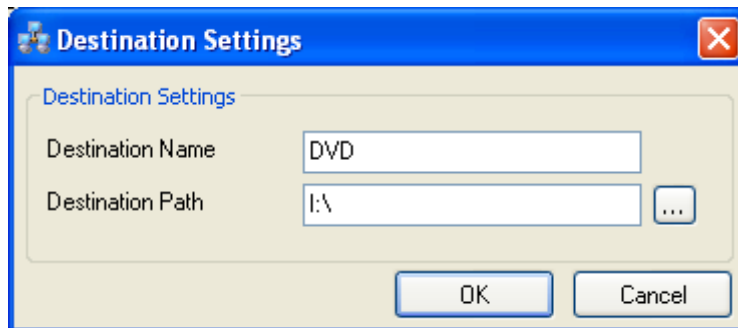
To use the DVR Backup Utility valid destinations for the video footage must first be added. Follow the steps below to add a destination:



1. Click the Destinations button to open the Destinations window.



2. Click the Add button to open the Destination Settings window.



3. Enter a name for the destination in the *Destination Name* box.
4. Enter a valid path for the destination in the *Destination Path* box. Alternatively, click the ... button to browse for a destination path. The Operating System drive or the drives that are used for the primary Video Storage Drives cannot be used as a backup destination.

1.2 Selecting Days Of Video For Backup

The next step is to select which days of video footage to backup. There are a few ways to select and deselect dates, which are listed below. Current or future dates cannot be selected.

- Individual dates can be selected and deselected by left-clicking on the date in the calendar.
- Whole months can be selected and deselected by left-clicking on the name of the month.



- All dates can be deselected at once by clicking the **Deselect All** button in the toolbar.

1.3 Backing Up Days of Footage

Once dates have been selected in the calendar, video footage that was recorded on those days can be backed up by selecting a pre-added destination in the Destination drop-down menu and clicking the Backup button.

Once the backup is complete, the selected days will either be colored grey or green.

- A grey-colored date represents a date where a backup was attempted, but there was no video footage to backup.
- A green-colored date represents a date where a backup was successfully completed.

1.4 Reviewing Backups

There are two ways to review previous backups:

- Select a date that is colored green (green represents a successful backup for that date). Information will appear in the table below the calendar. The information includes the footage start time, footage end time, the user who performed the backup, the export date, the media serial number and the backup location.



- Click the **Logs** button to open the Backup Log window. Select a From and To time to search for successful backups. The search results will include the footage start time, footage end time, the export date, the user who performed the backup, the backup location and the media serial number.

1.5 Playing Backed Up Video Footage

To review video footage that has been backed up with the DVR Backup Utility:

1. Insert the removable drive or DVD that contains the backed up video files, if applicable.
2. Navigate to the backup destination in Windows Explorer. To find what destination the backup was saved to, review Section 1.4: Reviewing Backups.
3. Open the DATA folder and then select the date you wish to view footage from. The first four digits represent the year, the next two digits represent the month, and the last two digits represent the date. For example, select "20091102" to view footage from November 2, 2009.
4. Next, select the hour you wish to view footage from. The hours range from "00", which contains footage recorded from 12AM to 12:59 AM, to "23", which contains footage from 11PM to 11:59PM.
5. Finally, select a video file to play back. The first two digits represent the camera number, where the camera number is always the camera number minus one (i.e. cam#-1). The last four digits are the minute and second of footage. For example, select "092725" to view footage from camera #10 on the 27th minute, 25th second of the hour selected in step 4. The selected video file will open automatically in DV Player.

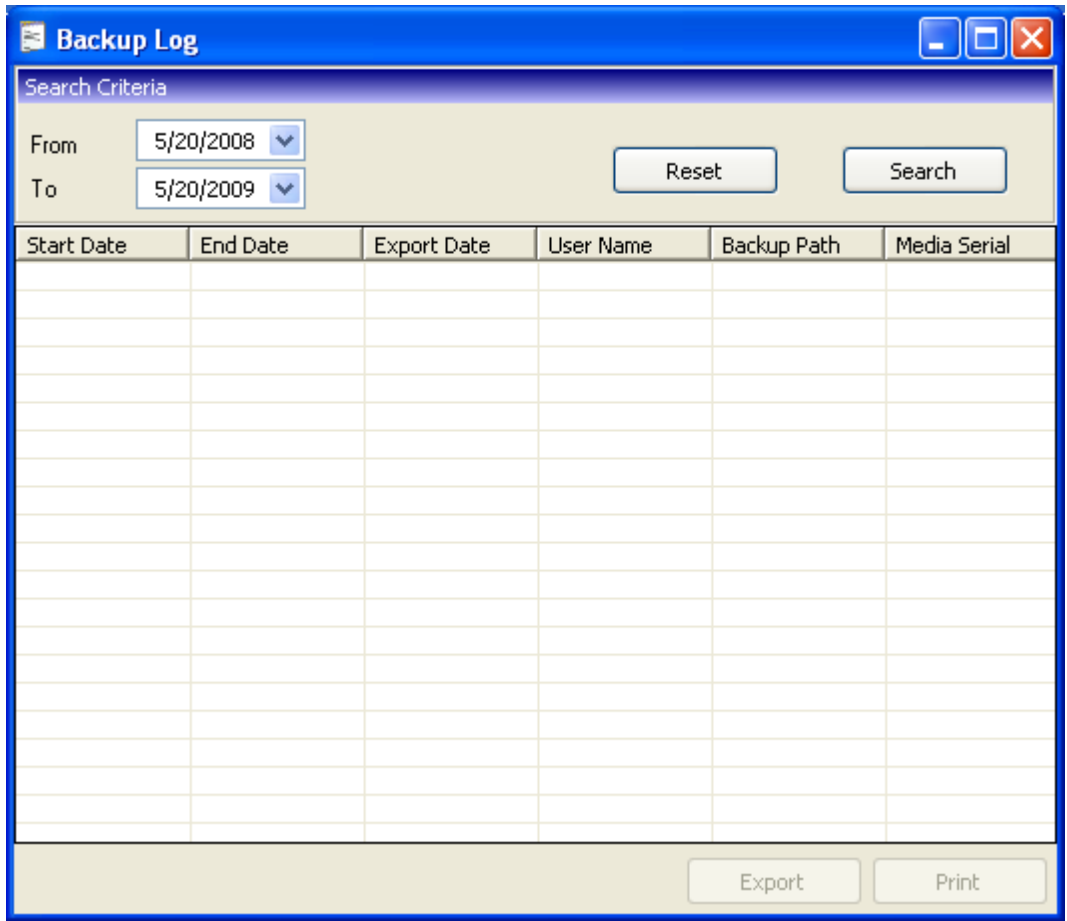


Note: A new video file is written for every minute of the hour that contains footage; therefore, video can only be played back in one minute segments. To playback large chunks of video footage, please use the Vigil Server or Vigil Client search and playback features.

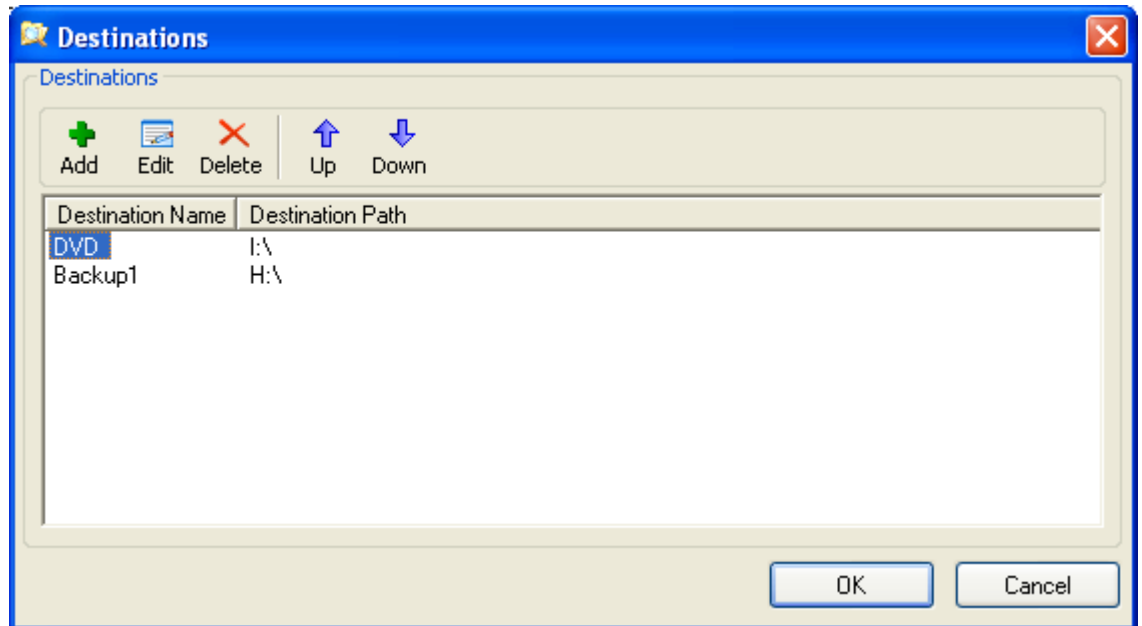
2 Quick Overview of the DVR Backup Utility

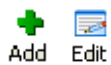
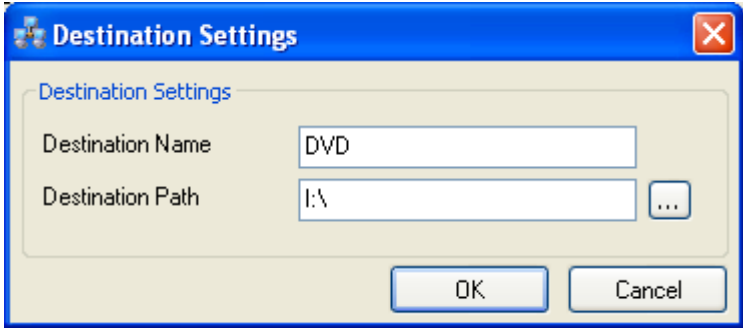




The screenshot shows the DVR Backup Utility interface. The main area contains a calendar grid for the period from June 2008 to May 2009. The dates 13, 14, 15, and 16 of May 2009 are highlighted in green. Below the calendar is a table with columns: Footage Start, Footage Ends, User, Export Date, Media Serial, and Location. At the bottom, there is a 'Destination' dropdown menu set to 'Backup1', a 'Backup' button, and a 'Display months prior to:' dropdown menu set to 'May 2009'.

	Closes the DVR Backup Utility.
	Opens the <i>Backup Log</i> window, where backups can be searched for.



Opens the *Destinations* window, where backup destinations can be added, edited, deleted or prioritized.



 <p>Add Edit</p>	<p>Opens the <i>Destination Settings</i> window where backup destinations can be added and edited.</p> 
 <p>Delete</p>	<p>Deletes the selected destination.</p>
 <p>Up Down</p>	<p>Moves the destination up/down in the destination list.</p>
 <p>Deselect All</p>	<p>Deselects all highlighted dates in the main <i>DVR Backup Utility</i> window.</p>
 <p>About</p>	<p>Opens the <i>About DVR Backup Utility</i> window that provides the software version number and system information.</p>

Contact Information

If you require more information, or if you have any questions or concerns, please contact 3xLogic Technical Support:
Toll Free (North America): 1-877-3XLOGIC (1-877-395-6442)
Email: support@3xlogic.com
Online: www.3xlogic.com