



Intelligent Video Surveillance

Tech Tip 100005

Micros 3700 POS Data Collector Setup Guide

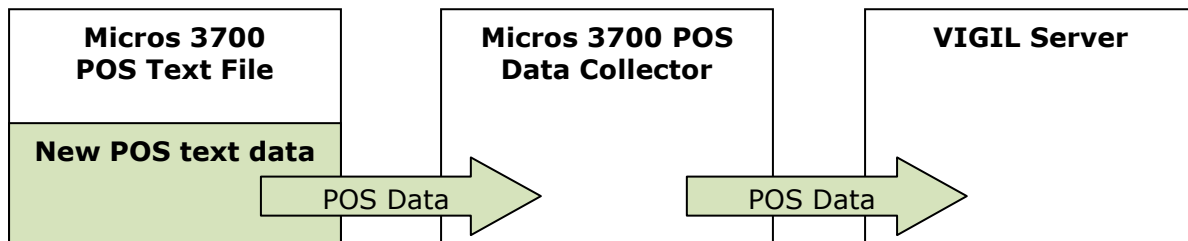
Tech Tip Number:	100005
Date:	June 7, 2010
Revised:	April 27, 2012
Product Affected:	VIGIL Software Suite recording POS data using the Micros 3700 POS Data Collector utility
Purpose:	This bulletin provides information on the setup and use of the Micros 3700 POS Data Collector utility.

Table of Contents

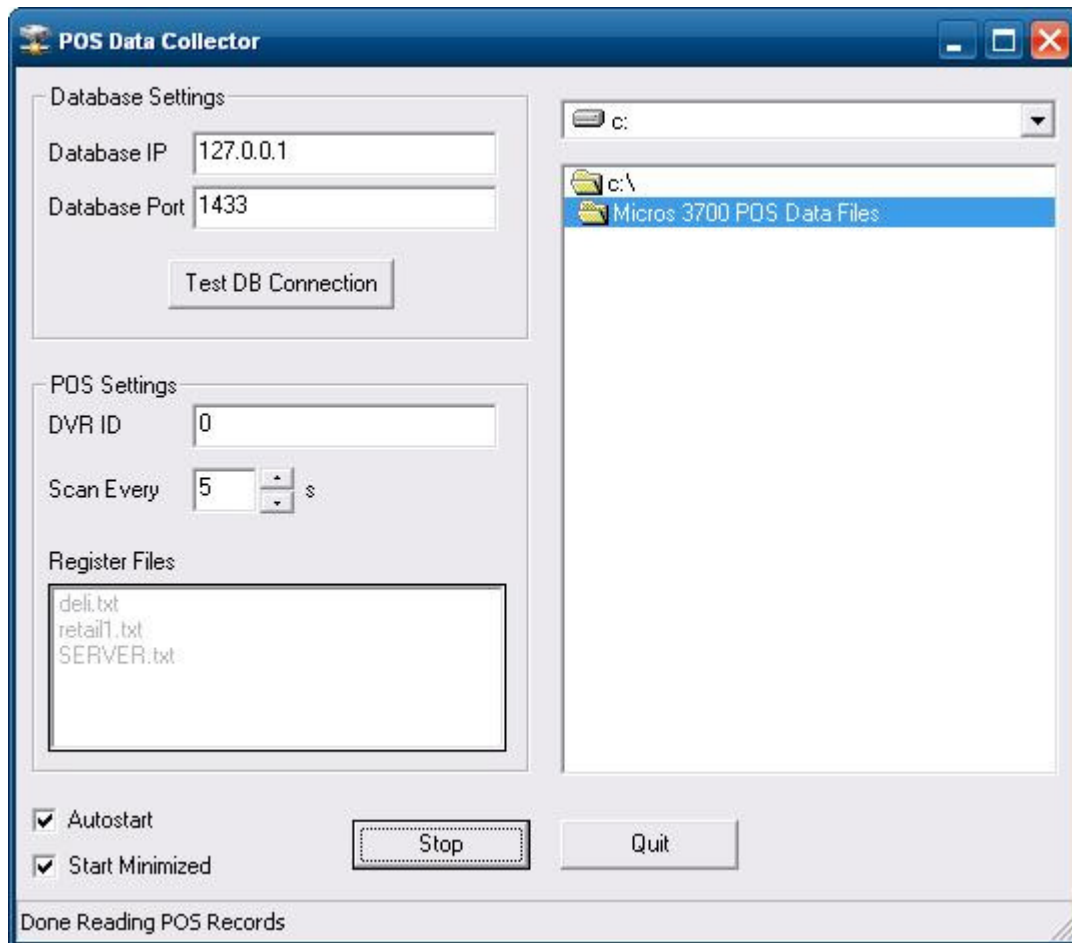
- 1 MICROS 3700 POS DATA COLLECTOR OVERVIEW2
- 2 MICROS 3700 POS DATA COLLECTOR SETUP3
- 3 VIGIL SERVER CONFIGURATION.....4
- 4 CONFIGURING A NETWORK SHARE TO ACCESS MICROS DATA FILES.....5
- 5 CONTACT INFORMATION.....5

1 Micros 3700 POS Data Collector Overview

The Micros 3700 POS Data Collector program is a software application that transfers data from Micros 3700 POS Data files to the VIGIL Server DVR. The Micros 3700 POS Data Collector application can be installed on the VIGIL Server DVR system, or on a separate PC. The Micros 3700 POS system updates POS text files. The Micros 3700 POS Data Collector detects changes to the text files and converts the POS data into VIGIL Server format and inserts this POS data into the VIGIL Server database. The data can then be viewed in the VIGIL Server Live Viewer as well as in the Playback window alongside corresponding video footage.



2 Micros 3700 POS Data Collector Setup



1. Install the *Micros 3700 POS Data Collector* software if it is not already installed
2. Configure the **Database Settings** – these settings adjust the connection between the *Micros 3700 POS Data Collector* and the VIGIL Server DVR database.
 - a. **Database IP** - If the *Micros 3700 POS Data Collector* is installed on the VIGIL Server DVR system then configure the **Database IP** as **127.0.0.1** Otherwise, enter the IP address of the VIGIL Server DVR System. For assistance, please contact the local network administrator.
 - b. **Database Port** – Enter the port used by the VIGIL Server system database. The 3xLogic factory default port is **2025**.

To look up this port number in *VIGIL Server*, select *Start > Programs > VIGIL > Database Manager*, enter a username and password with administrative privileges and then select the *Database Settings* tab. The Database Port is listed under *TCP Port > Port Number*.

3. Configure the **POS Settings**:

For a complete listing of Service Bulletins, please go to <http://www.3xlogic.com>

- a. **DVR ID** – The DVR ID that will be used when POS entries are written to the database. Recommended setting: 0
 - b. **Scan Every ___ seconds** – The file is scanned to detect new POS data at the configured interval.
4. Configure the **POS file folder** – Select the folder where the Micros POS files are stored and updated.
 - a. Select the hard drive in the drop down list.
 - b. Browse to the folder containing the POS files.
 - c. The text files found in the selected folder are displayed in the **Register Files** area.
 5. Enable **Autostart** for the *Micros 3700 POS Data Collector* software to start automatically when it is launched.
 6. Click **Start**. If the *Micros 3700 POS Data Collector* is configured correctly, then the POS data will be displayed in the right window.
 7. Select **Start Minimized** for the *Micros 3700 POS Data Collector* software to be minimized when it is launched.

3 VIGIL Server Configuration

1. In **VIGIL Server**, click on **Settings** and then select the **Data** tab
2. In the **External POS Data** sub tab, enable **External POS Data**
3. Select a *Terminal* number
4. If desired, select a *Priority Camera*
5. Click **OK**
6. **Ensure that new POS data is being displayed in the VIGIL Server Data Live window and also in the VIGIL Server Playback window:**
 - a. In the *Tools* dropdown, select *Live POS Data* and ensure that new data records are displayed
 - b. In the *Search* window, select *POS Data* and then click *Search* and ensure that new data records are displayed
7. Restart the computer by selecting *Start > Shut Down > Restart* and ensure that the *Micros 3700 POS Data Collector* starts up automatically when Windows starts up and ensure that new POS data is being displayed in the *VIGIL Server Data Live* window and also in the *VIGIL Server Playback* window.

4 Configuring a Network Share to Access Micros Data Files

The Micros 3700 creates text files locally on the Micros system. You can create a batch file to map a drive letter to the share containing the text files to ensure the mapping gets set during startup of the DVR server, before the data collector gets launched.

You will need to know the UNC path and the user and password to use to log into the shared folder.

Place the batch file on the 3xLOGIC Vigil server (DVR) under the startup folder (Start > Programs > Startup)

Sample batch file:

```
NET USE Z: \\MicrosPCName\ShareName /USER:username password /PERSISTENT:NO  
start /DC:\Software\Micros3700 POSDataCollector.exe
```

Ensure that after restarting Windows, the Micros is pointing to your network share and that VIGIL Server is displaying new POS data in the Live ATM/POS Data window.

If you have any questions or if you would like assistance with any of these steps, please contact 3xLogic Technical Support at 1-877-3XLOGIC

5 Contact Information

If you require more information, or if you have any questions or concerns, please contact 3xLOGIC Technical Support:
Toll Free (North America): (877) 3XLOGIC or (877) 395-6442
Email: support@3xlogic.com
Online: www.3xlogic.com