



Intelligent Video Surveillance

Tech Tip 100006

Smartphone HTTP Interface Configuration Guide

Tech Tip Number:	100006
Date:	June 17, 2010, revised March 29, 2012
Product Affected:	VIGIL Server versions 5.00.0835 and higher
Purpose:	This bulletin provides instructions on how to configure the Smartphone Video Stream Interface for VIGIL Server systems.

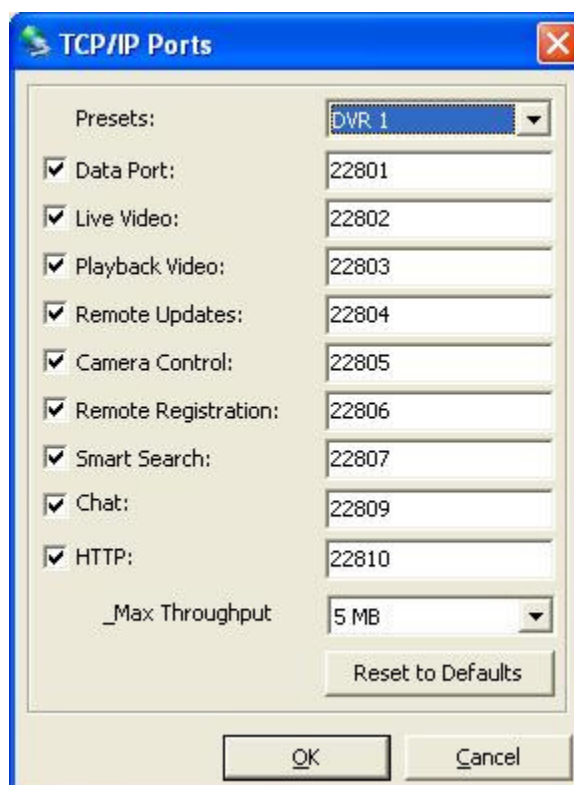
Table of Contents

- 1 VIGIL SERVER CONFIGURATION.....2
- IP CAMERA CONFIGURATION FOR MAXIMUM FPS DISPLAY2
- 2 3XLOGIC LIVE IMAGE STREAMING USING LIVECAMS.....3
 - LIVE CAMS CONFIGURATION3
 - ADD CAMERA: 3XLOGIC4
 - VIEW LIVE VIDEO5
- 3 TROUBLESHOOTING THE VIGIL SERVER VIDEO STREAM USING A WEB BROWSER6
 - WEB BROWSER SETUP FOR BROWSERS WITH JPEG VIDEO STREAM SUPPORT6
 - WEB BROWSER SETUP FOR BROWSERS WITH STILL IMAGE SUPPORT ONLY6
- 4 CONTACT INFORMATION.....8

1 VIGIL Server Configuration

To configure *VIGIL Server* for use with the Smartphone HTTP Interface:

1. In the *Settings* window, *DVR Settings* tab, click the *TCP/IP Ports* button
2. In the *TCP/IP Ports* window, enable *HTTP*. The default port for the HTTP interface is 22810.
3. Select the Max Throughput in megabytes per second from the dropdown list. The default maximum throughput is 5 MB per second.
4. Click OK
5. *VIGIL Server* must restart for the settings to take effect.
6. To connect to the *VIGIL Server* station from outside of the local network, please contact your network administrator to have the port forwarding for the configured port forwarded to the *VIGIL DVR* system.



IP camera configuration for maximum FPS display

In version 6.00.0005, the maximum number of frames per second displayed in the Live Cams application depends on the number of frames per second available live from the *VIGIL Server* system. For IP cameras, in the *Settings, Camera Setup, Network Camera Settings* window, the **Decoding FPS** is the maximum FPS that will be available in the Live Cams application.

In version 7.00, HTTP connection support was expanded to allow real time display. HTTP support now decodes all FPS if 1 FPS or higher is requested.

2 3xLOGIC Live Image Streaming using LiveCams

The 3xLOGIC IP camera type is available in Live Cams 4.1 and Live Cams HD 1.1.

Live Cams Configuration



Camera Type: Select the 3xLOGIC IP camera type. This is the ideal camera type for viewing video from a VIGIL Server DVR.

Add Camera: 3xLOGIC



Name: Enter the camera name or a description for the VIGIL Server camera.

Host or IP: Enter the VIGIL Server IP address. Note: For access from the internet, use the external address of the router. Contact your network administrator for assistance.

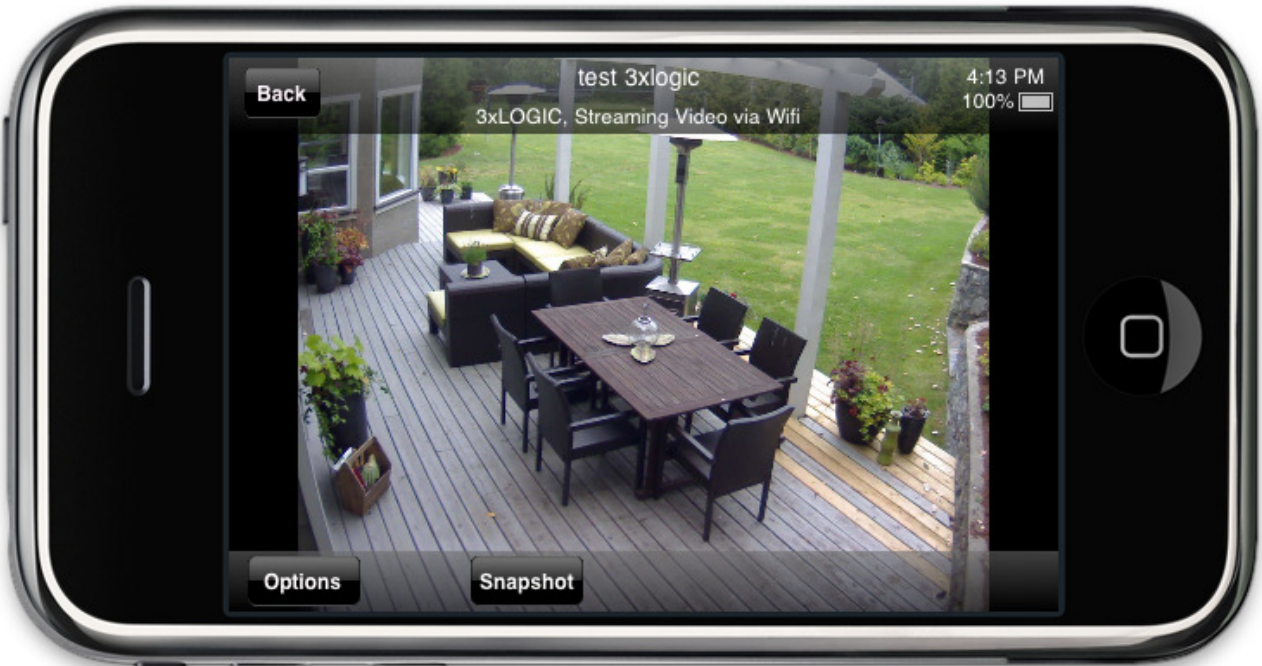
Port: Enter the configured VIGIL Server HTTP port.

Username and Password: Enter the login credentials used to access VIGIL Server.

Camera: Enter the VIGIL Server camera number.

View Live Video

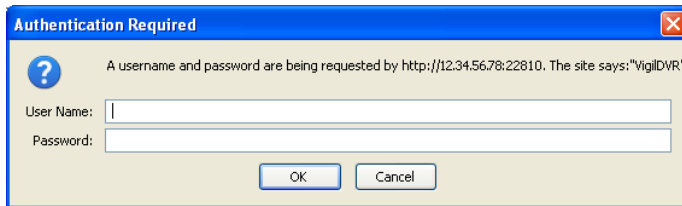
Click on the video thumbnail to view the video in full screen mode.



3 Troubleshooting the VIGIL Server Video Stream Using a Web Browser

Web Browser Setup for Browsers with JPEG Video Stream Support

1. In the browser address bar, enter the IP address of the VIGIL Server DVR followed by a colon and then the port number. For example, if you are using the default port and your IP address is 12.34.56.78, the address would be: `http://12.34.56.78:22810`
2. A username and password prompt will be displayed. Enter the *VIGIL Server* login credentials.



3. The following settings will be displayed for each camera:

1. Cam1	Quality: 75	FPS: 1	Resolution: Fullsize	LIVE
---------	-------------	--------	----------------------	------

Note: If you are using a browser that does not support video streaming, the button to the right will display "Snap Shot" instead of "LIVE". Please see below for configuration information. Firefox and Safari are browsers that are known to support JPEG video streaming.

4. Select the *Quality*, *Frames Per Second (FPS)* and *Resolution* to be used for the JPEG video stream and then click the *LIVE* button.
5. In the video stream window that is displayed, the address can be copied from the browser window address bar and used to view video directly with the configured settings. For example, using the settings above, the address would be:

`http://12.34.56.78:22810/live?camera=1&quality=75&fps=1&resolution=Fullsize`

The address can be modified manually by adjusting the values in the address for each setting. The options for each setting are:

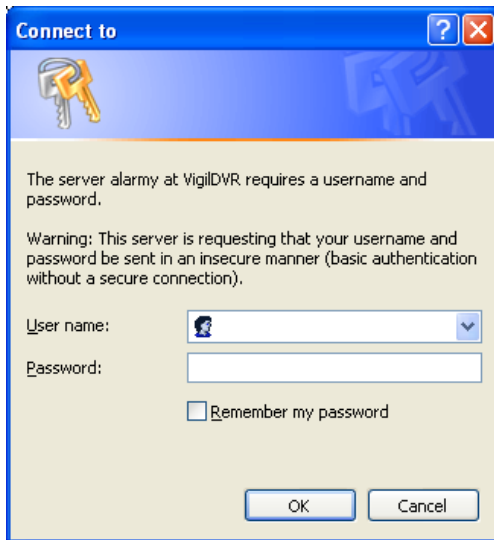
Camera: the camera number to be streamed
Quality: 85, 75, 65, 55, 45, 35 or 25
FPS: 1, 2, 3, 4, 5, 10, 15, 20 or 30
Resolution: Fullsize, VGA, 4CIF, DCIF, CIF or QCIF

Web Browser Setup for Browsers with still image support only

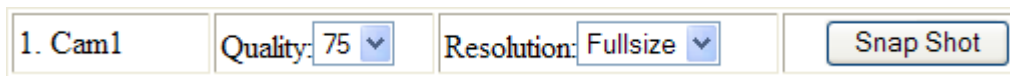
1. In the browser address bar, enter the IP address of the VIGIL Server DVR followed by a colon and then the port number. For example, if you are using the default port and your IP address is 12.34.56.78, the address would be: `http://12.34.56.78:22810`

For a complete listing of Service Bulletins, please go to <http://www.3xlogic.com>

2. A username and password prompt will be displayed. Enter the *VIGIL Server* login credentials.



3. The following settings will be displayed for each camera:



Note: If you are using a browser that supports video streaming, the button to the right will display "LIVE" instead of "Snap Shot". Please see above for configuration information. Internet Explorer and Google Chrome are browsers that are known to support still images only.

4. Select the *Quality* and *Resolution* to be used for the JPEG image and then click the *Snap Shot* button.
5. In the window displaying the JPEG image, the address can be copied from the browser window address bar and used to view a live image directly with the configured settings. For example, using the settings above, the address would be:

`http://12.34.56.78:22810/live?camera=1&quality=75&resolution=Fullsize`

The address can be modified manually by adjusting the values in the address for each setting. The options for each setting are:

Camera: the camera number to be streamed
Quality: 85, 75, 65, 55, 45, 35 or 25
Resolution: Fullsize, VGA, 4CIF, DCIF, CIF or QCIF

4 Contact Information

If you require more information, or if you have any questions or concerns, please contact
3xLOGIC Technical Support:

Toll Free (North America): (877) 3XLOGIC or (877) 395-6442

Email: support@3xlogic.com

Online: www.3xlogic.com