



Tech Tip 080022

Retalix Store Point - UDP Reader Setup Guide

Tech Tip No.:	080022
Product Affected:	VIGIL Server systems Recording Data from a Retalix UDP Terminal
Date:	November 21, 2008 / Revised January 26, 2011
Description:	Retalix Store Point - UDP Reader Setup Guide
POS Vendor:	Retalix
POS Type:	Store Point
POS Version:	1.10.10903.1400

Table of Contents

1	RETALIX UDP READER OVERVIEW	2
2	RETALIX UDP READER SETUP	3
3	VIGIL SERVER CONFIGURATION	4
4	CONTACT INFORMATION	4

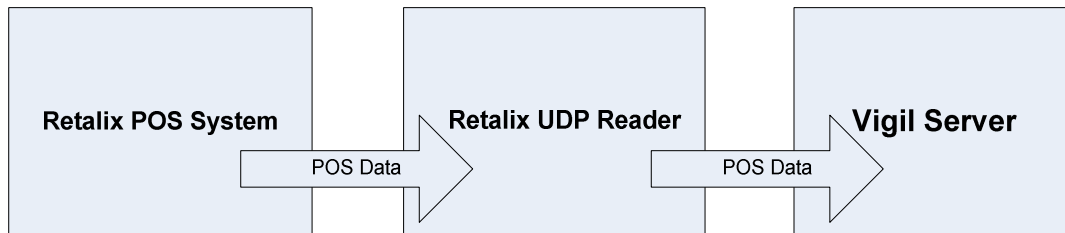
1 Retailix UDP Reader Overview

The Retailix UDP Reader program is a software application that transfers data from the Retailix POS system to the VIGIL Server DVR. The Retailix UDP Reader application can be installed on the VIGIL Server DVR system, or on a separate PC. The Retailix POS system broadcasts UDP data over the network. The Retailix UDP Reader listens for the UDP data on the network, converts the POS data into VIGIL Server format and inserts this POS data into the VIGIL Server database. The data can then be viewed in the VIGIL Server Live Viewer as well as in the Playback window alongside corresponding video footage.

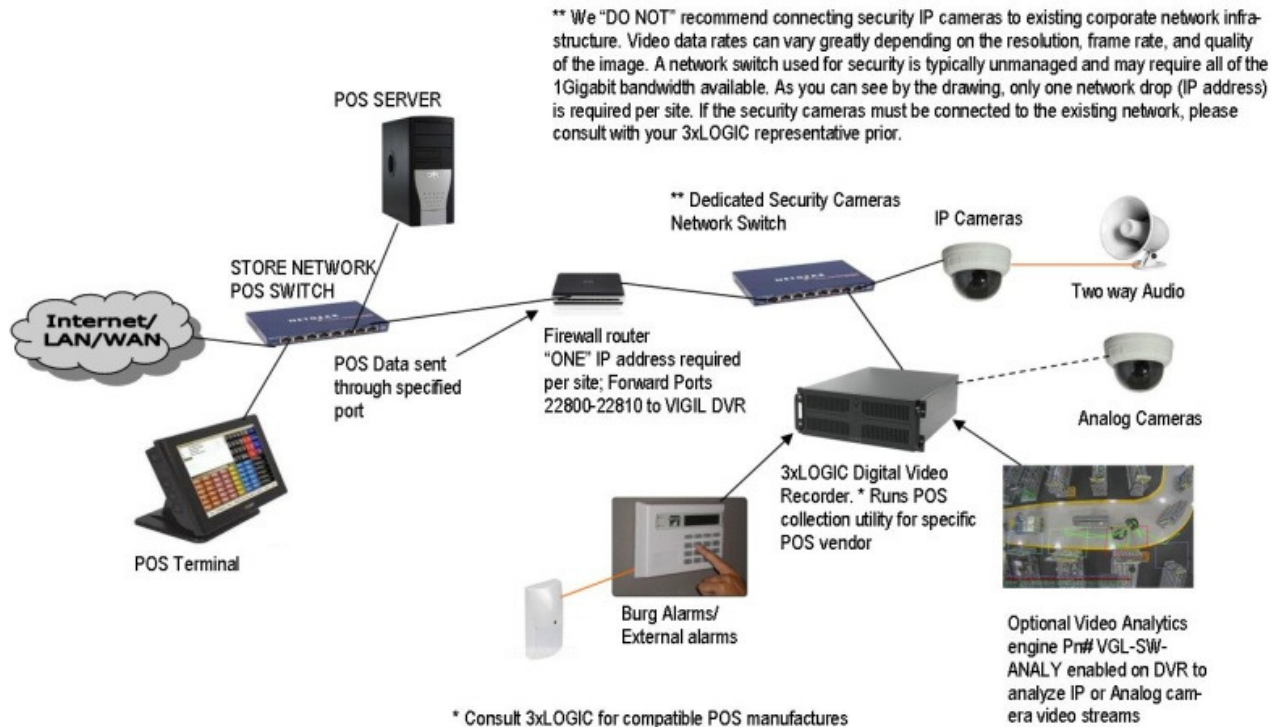
The Retailix UDP Implementation has been tested against the following:

Type: Store Point Version: 1.10.10903.1400

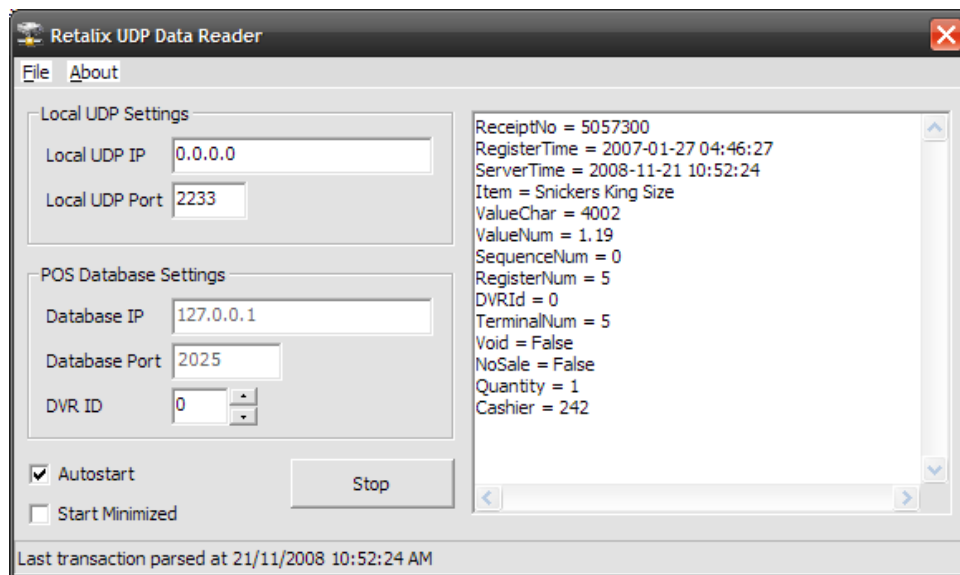
POS Data Flow Chart



Typical Network Topology



2 Retalix UDP Reader Setup



1. Install the *Retalix UDP Reader* software if it is not already installed
2. Configure the **Local UDP Settings** – these settings adjust the connection between the Retalix POS system and the *Retalix UDP Reader*

If the Retalix POS system is using the default broadcast UDP mask of 255.255.255.255 then configure the **Local UDP IP** as **0.0.0.0** and the **Local UDP Port** as **2233**. Otherwise, please contact the local network administrator for the IP address and port to be used to receive UDP data from the Retalix POS system.

Note to Network Administrators: The Retalix UDP Data Reader uses standard UDP protocol for receiving POS Data from the Retalix POS system.

3. Configure the **POS Database Settings** – these settings adjust the connection between the *Retalix UDP Reader* and the *VIGIL Server* software.
 - a. **Database IP** - If the *Retalix UDP Reader* is installed on the *VIGIL Server* DVR system, configure the **Database IP** as **127.0.0.1** Otherwise, enter the IP address of the *VIGIL Server* DVR System. For assistance, please contact the local network administrator.
 - b. **Database Port** – Enter the port used by the *VIGIL Server* system database. The 3xLogic factory default port is **2025**.

To look up this port number in *VIGIL Server*, select *Start > Programs > VIGIL > Database Manager*, enter a username and password with administrative privileges and then select the *Database Settings* tab. The Database Port is listed under *TCP Port > Port Number*.

4. Enable **Autostart** for the Retalix UDP Reader software to start automatically when it is launched.
5. Select **Start Minimized** for the Retalix UDP Reader software to be minimized when it is launched.
6. Click **Start**. If the Retalix UDP Reader is configured correctly, then the POS data will be displayed in the right window.

3 VIGIL Server Configuration

1. In **VIGIL Server**, click on **Settings** and then select the **Data** tab
2. In the **External POS Data** sub tab, enable **External POS Data**
3. Select a *Terminal* number
4. If desired, select a *Priority Camera*
5. Click **OK**
6. **Ensure that new POS data is being displayed in the VIGIL Server Data Live window and also in the VIGIL Server Playback window:**
 - a. In the *Tools* dropdown, select *Live POS Data* and ensure that new data records are displayed
 - b. In the *Search* window, select *POS Data* and then click *Search* and ensure that new data records are displayed
7. Restart the computer by selecting *Start > Shut Down > Restart* and ensure that the *Retalix UDP Reader* starts up automatically when Windows starts up and ensure that new POS data is being displayed in the *VIGIL Server Data Live* window and also in the *VIGIL Server Playback* window.

If you have any questions or if you would like assistance with any of these steps, please contact 3xLogic Technical Support at 1-877-3XLOGIC

4 Contact Information

If you require more information, or if you have any questions or concerns, please contact 3xLogic Technical Support:
Toll Free (North America): 1-877-3XLOGIC (1-877-395-6442)
Email: support@3xlogic.com
Online: www.3xlogic.com