

# 3xLOGIC

## Tech Tip 090017

### VGL-DS-2DF1-613 PTZ IP Camera Vigil Server Setup Guide

<b>Tech Tip Number:</b>	090017
<b>Date:</b>	June 18, 2009
<b>Product Affected:</b>	Vigil Server version 6.00 and higher
<b>Purpose:</b>	This tech tip provides instructions on how to set up a VGL-DS-2DF1-613 PTZ IP camera on a Vigil Server system



#### Table of Contents

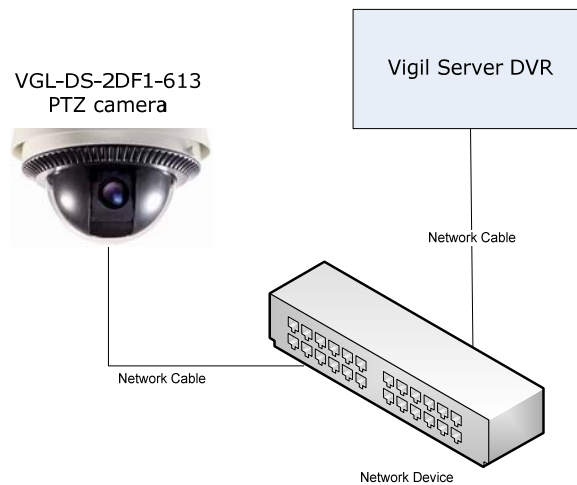
1	BASIC HARDWARE CONFIGURATION LAYOUT.....	2
2	WEB SETTINGS CONFIGURATION - SETTING UP A NEW VGL-DS-2DF1-613 PTZ IP CAMERA.....	3
3	VIGIL SERVER CONFIGURATION.....	7
4	CONTACT INFORMATION .....	8

# 1 Basic Hardware Configuration Layout

The VGL-DS-2DF1-613 PTZ IP Camera communicates with the Vigil Server DVR over the network. Please note that in order to avoid unnecessary network traffic, connect the Vigil Server DVR and the IP Cameras to the same network device.



**Important Note:** Configure the VSX-IP cameras one at a time. If there are multiple cameras that require configuration, before you begin to configure a camera, unplug all other un-configured cameras from the network device.



Note: To avoid unnecessary network traffic, connect the Vigil Server DVR and the IP Cameras to the same network device when possible.

## 2 Web Settings Configuration - Setting up a new VGL-DS-2DF1-613 PTZ IP Camera

Note: All VGL-DS-2DF1-613 PTZ IP Camera initially have the IP address 192.0.0.64

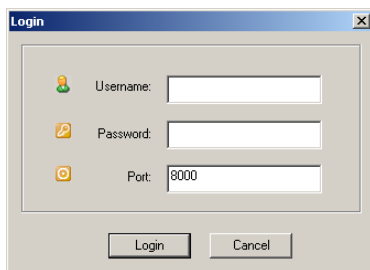
Copy the VSX-IP Utility folder from USB drive  
TECH KIT\IP cam Utilities to C:\Software

This file can also be obtained by contacting 3xLogic Technical Support at 1-877-3XLOGIC.

Double click **EtherDetect\_setup1.3.exe** (accept defaults)

### To run the application

1. Change the IP address of your setup computer ( laptop or DVR) to 192.0.0.1 with Subnet Mask 255.0.0.0 Default Gateway 192.168.2.1
2. Open Internet Explorer and type in the Address Bar <http://192.0.0.64>
3. Press Enter
4. You will see a login screen ...

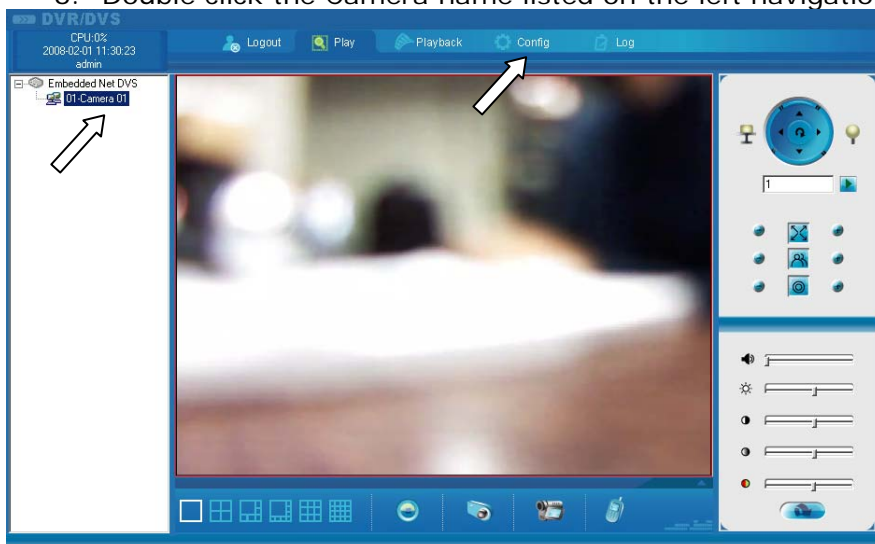


Username = admin

Password = 12345

Port = 8000

5. Click Login button
6. Double click the Camera name listed on the left navigation bar

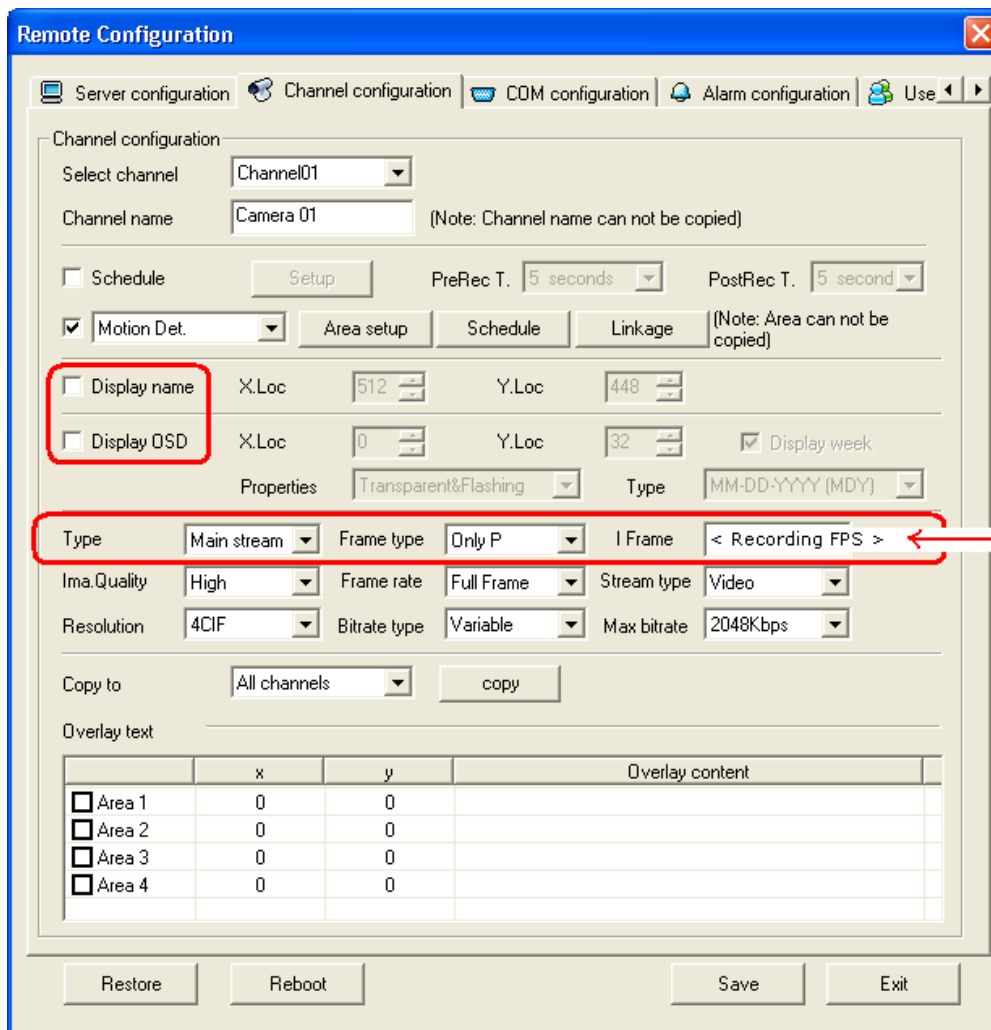


7. Click **Config** on the toolbar



Click the **Channel configuration** tab

9. Select **Main Stream**
10. Change **Frame Type** to **Only P** (Instead of the default BBP, which is not supported by Vigil)
11. Change **I Frame Interval** to your recording frame rates. For example, if you record at 30FPS, then set **I Frame Interval** to 30.
12. Select **Sub Stream**
13. Change **Frame Type** to **Only P** (Instead of the default BBP, which is not supported by Vigil)
14. Change **I Frame Interval** to your **recording frame rates**. For example, if you record at 30FPS, then set **I Frame Interval** to 30.
15. Please ensure that both the **Major Stream** and **Sub Stream** are modified, VGL-DS-2DF1-613 PTZ IP cameras have dual stream support.
16. **Disable** the **Show Name** and **Show OSD** check boxes



Set the I Frame value to the Recording Frame Rate that will be used in Vigil Server.

Example 1: If Vigil Server will be recording at 1 FPS, set the I Frame to 1.

Example 2: If Vigil Server will be recording at 5 FPS, set the I Frame to 5.

17. Select **COM Configuration**

18. Set the **PTZ Type** to **HIKVISION** and the **PTZ address** to **0** (see image below).

The image shows a 'Remote Configuration' window with several tabs: 'Server configuration', 'Channel configuration', 'Network configuration', and 'COM configuration'. The 'COM configuration' tab is active. It is divided into two sections: 'RS232 Configuration Information' and 'RS485 Configuration Information'. The RS232 section includes fields for Baud rate (115.2k), Data bits (8), Stop bits (1), Parity (None), Flow control (None), and Work mode (Console). The RS485 section includes Channel No. (Channel01), Baud rate (9600), Data bits (8), Stop bits (1), Parity (None), and Flow control (None). A red rectangle highlights the 'PTZ type' dropdown menu, which is set to 'HIKVISION', and the 'PTZ address' text box, which contains the value '0'. At the bottom of the window, there are buttons for 'Restore', 'Reboot', 'Save', and 'Exit'.

19. Click the **Save** button

20. Click the **Reboot** button

21. The camera can now be accessed using the IP address configured in step 8. This IP address will be used in the *Vigil Server Configuration* instructions below.

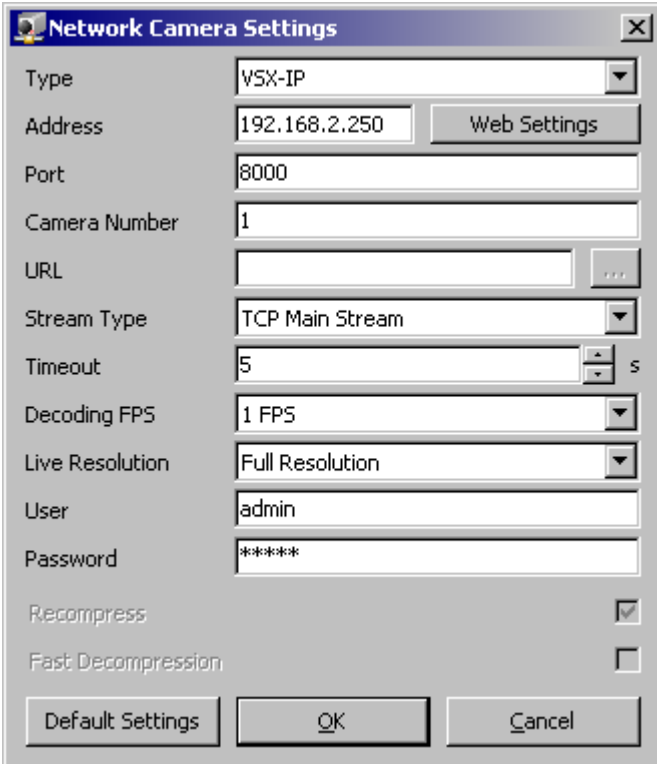
**Repeat the above steps for each VGL-DS-2DF1-613 PTZ IP camera.**

### 3 Vigil Server Configuration

1. In **Vigil Server**, click on **Settings** and then select an available camera input on the left
2. Enable the **Network Camera** checkbox on the right, select the desired FPS from the dropdown list and click OK
3. In the **Network Camera** section, click the **Settings** button and enter the following settings:

**Type: VSX-IP**

**Address:** Enter the address of the IP Camera as configured in the above Web Setting Configuration steps



Type	VSX-IP
Address	192.168.2.250
Port	8000
Camera Number	1
URL	
Stream Type	TCP Main Stream
Timeout	5 s
Decoding FPS	1 FPS
Live Resolution	Full Resolution
User	admin
Password	*****
Recompress	<input checked="" type="checkbox"/>
Fast Decompression	<input type="checkbox"/>

4. Click **OK** on the *Network Camera Settings* window
5. The Vigil Server DVR Settings *Camera Setup* tab should be displayed and the camera that is in the process of being configured should be selected in the left tree view
6. In the bottom of the Camera Setup tab, select the **Camera Control** sub tab
7. In the **Type** dropdown, select **VSX-IP**
8. Click **OK** on the DVR Settings window
9. **Repeat the Vigil Server setup steps for each VSX-IP camera**
10. Please check to ensure that all of the cameras are displayed in the live viewer and also in the playback window

If you have any questions or if you would like assistance with any of these steps, please contact 3xLogic Technical Support at 1-877-3XLOGIC

## 4 Contact Information

If you require more information, or if you have any questions or concerns, please contact 3xLogic Technical Support:

Toll Free (North America): 1-877-3XLOGIC (1-877-395-6442)

Email: [support@3xlogic.com](mailto:support@3xlogic.com)

Online: [www.3xlogic.com](http://www.3xlogic.com)