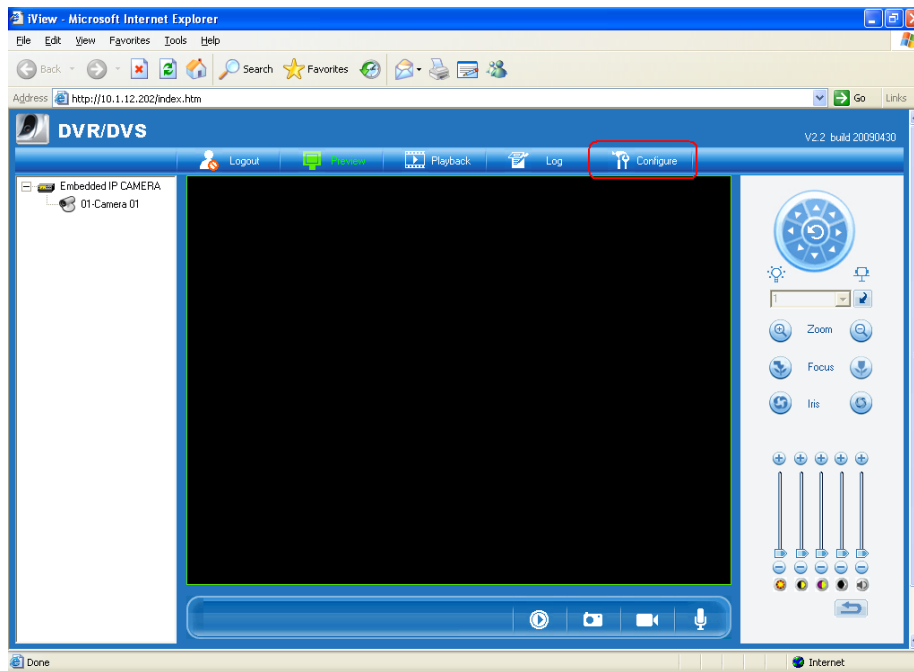


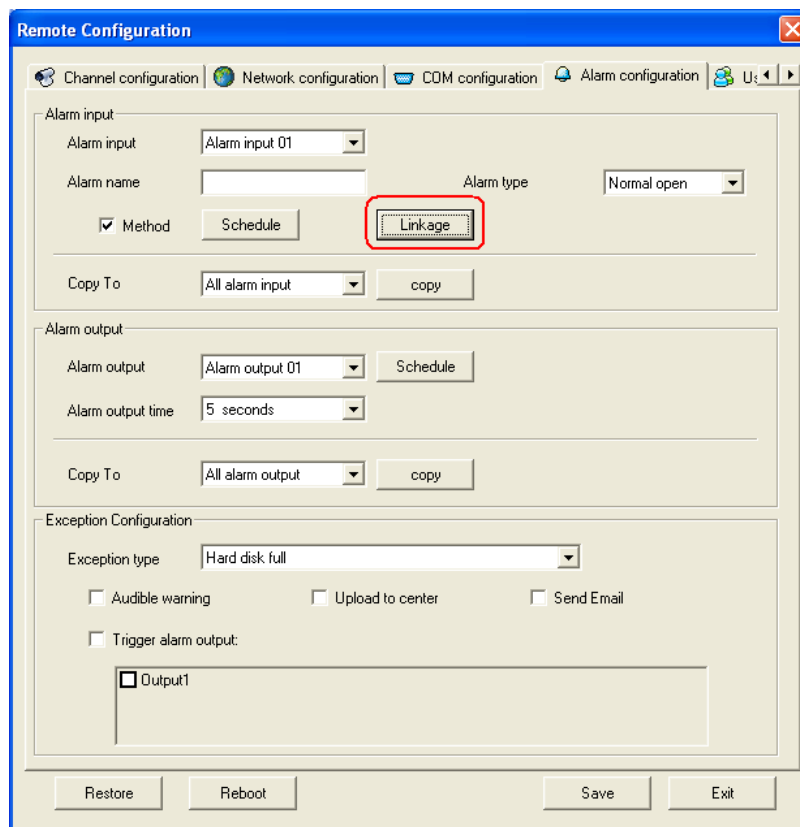


# 1 Configuring the VSX-IP Camera to Use the DIO features:

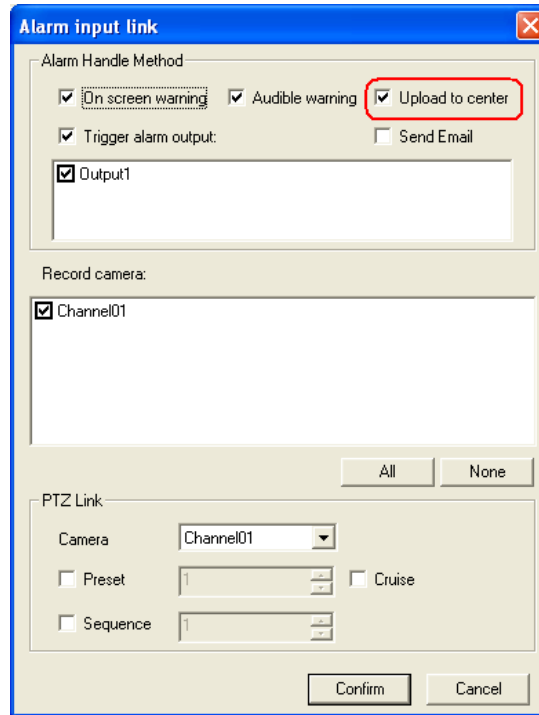
1. Go to the VSX-IP camera web settings > *Configure*.



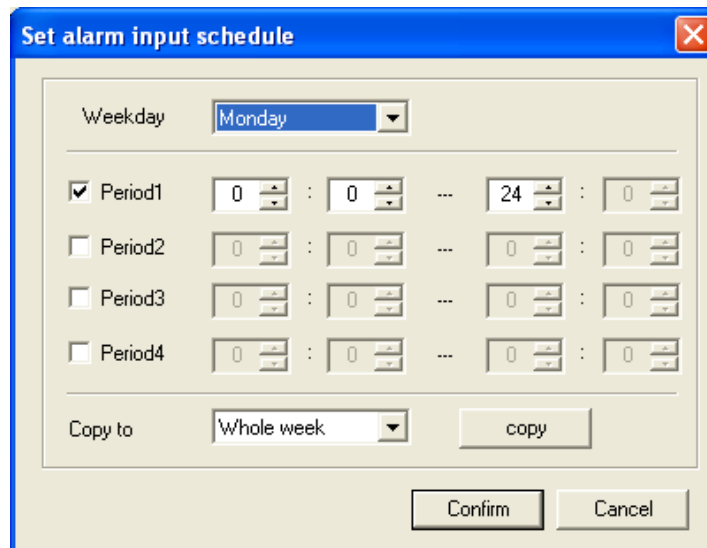
2. Click the *Linkage* button.



3. Enable *Upload to center*.



4. Click *Confirm*.
5. In the *Alarm configuration* tab click the *Schedule* button in the Alarm input section to open the Set alarm input schedule window.



6. Enable *Period1* and enter 0:0 --- 24.
7. Select *Whole week* in the *Copy to* drop-down menu and click the *copy* button.
8. Click *Confirm*.
9. In the *Alarm configuration* click the *Schedule* button in the Alarm output section.
10. Repeat steps 5-8.

11. Click *Save > OK > Reboot*.

## 2 Configuring Vigil Server to Use VSX-IP DIO Features:

1. Go to *DVR Settings > DVR Settings tab > Hardware tab > AUX Device Settings* to open the AUX Device Settings window.
2. Click the *Add* button to open the Edit DIO Device window.
3. Select *VSX-IP Device* in the Type drop-down menu.



The screenshot shows a dialog box titled "Edit DIO Device". At the top, there is a "Type" dropdown menu with "VSX-IP Device" selected. Below this is a section titled "Network Settings" containing several input fields: "IP Address" with the value "10.1.12.202", "Port" with "8000", "User Name" with "admin", "Password" with "\*\*\*\*\*", and "Timeout" with "2". At the bottom of the dialog, there are three buttons: "Test IP", "OK", and "Cancel".

4. Enter the IP address, port, user name and password for the VSX-IP camera that will be used as a DIO device.
5. Click *OK > OK > OK*.
6. To use the alarm inputs, they must be enabled in the *DVR Settings > Relays/Alarms* tab like any other DIO device. To use relay outputs, enable the relay as usual and select *VSX-IP Device*.

The setup is now complete.

### Contact Information

If you require more information, or if you have any questions or concerns, please contact 3xLogic Technical Support:  
Toll Free (North America): 1-877-3XLOGIC (1-877-395-6442)  
Email: [support@3xlogic.com](mailto:support@3xlogic.com)  
Online: [www.3xlogic.com](http://www.3xlogic.com)