

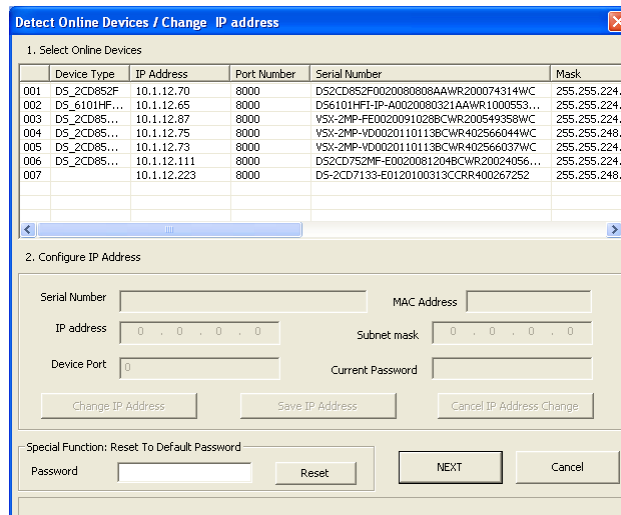
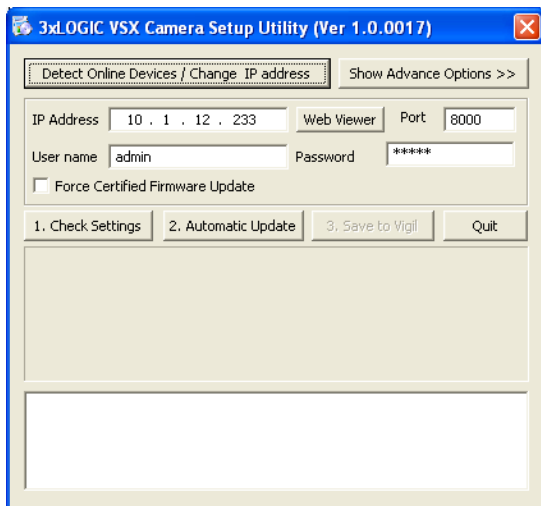
1 Download and Run the VISIX Setup Utility

The VISIX Utility can be downloaded from the following address: <http://www.3xlogic.com/tt-090023>. Click on "VSXIPSetup (ver 1.17).exe" to download the installation package.

Navigate to the folder where the VSXIPSetup is located and then double click the file named VSXIPSetup (v1.07).

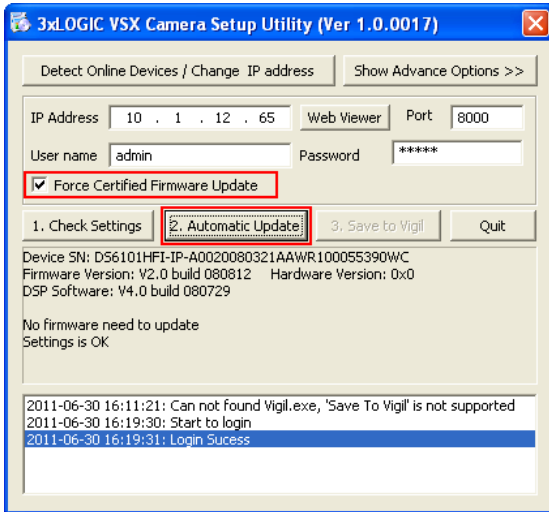
2 Upgrade Camera Firmware and Configure Settings for each camera

This section provides instructions on how to use the VISIX Setup Utility to detect, configure, scan and update VISIX cameras.



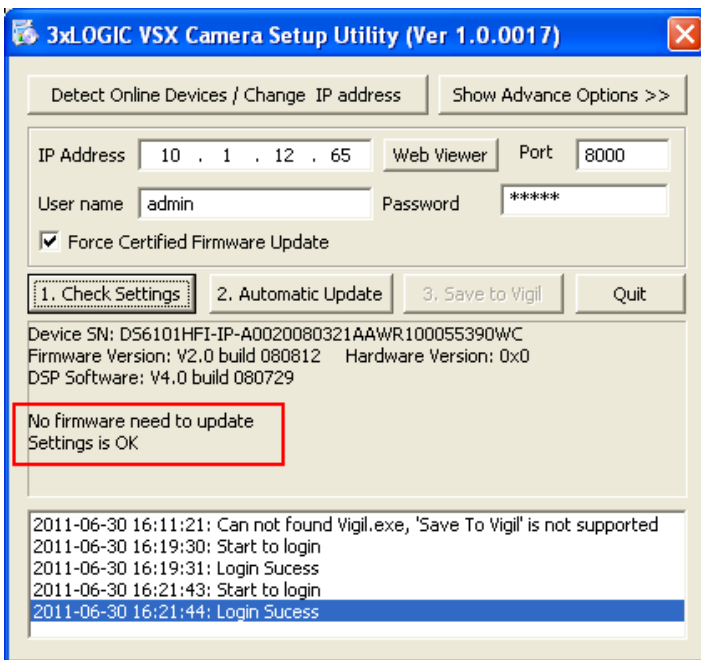
For each camera:

1. Click "**Detect Online Devices / Change IP Address**"
2. Select the IP Address of the desired camera and click "**Next**"
3. Click "**Automatic Update**"



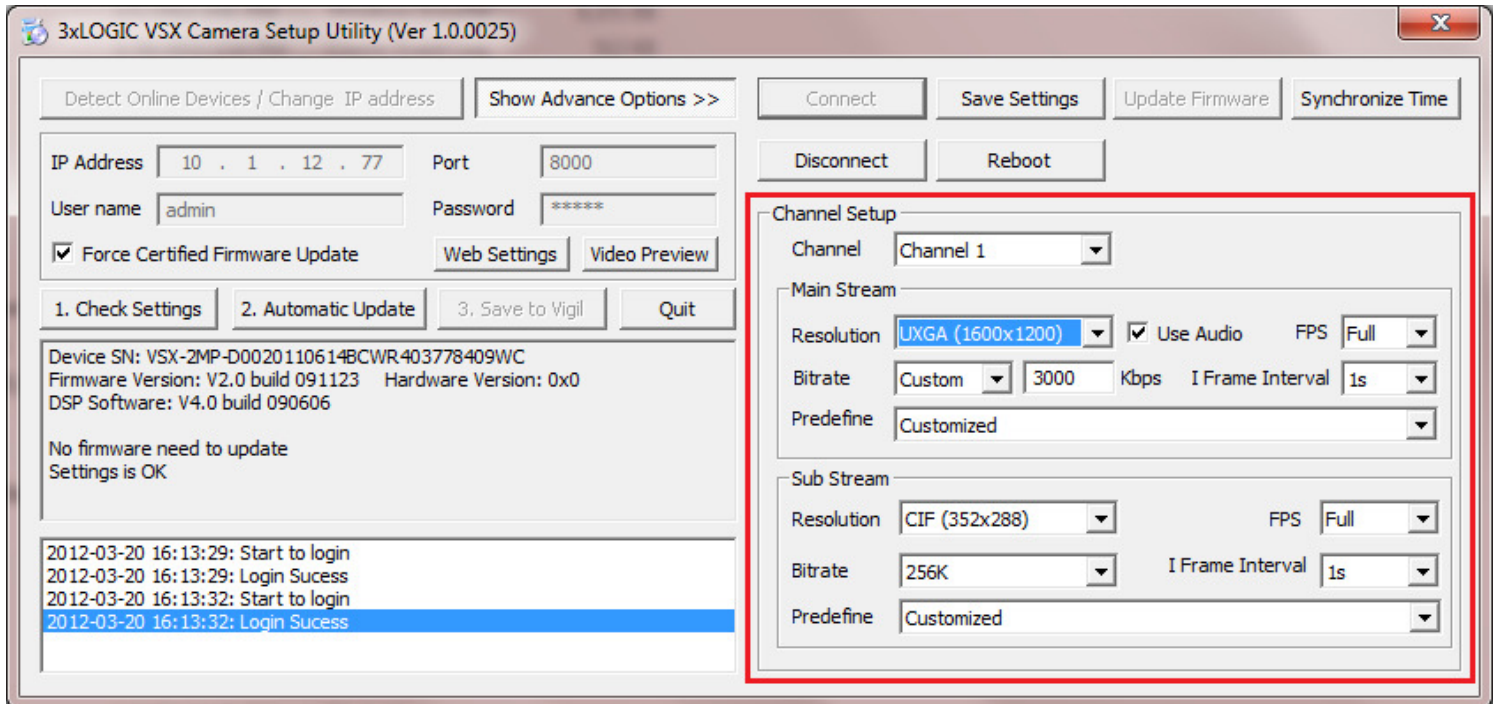
Wait while the firmware updates and essential settings are applied.

4. Ensure that the message displayed is "**Settings is OK**". If it does not display "Settings is OK" then click "Automatic Update" again.



5. Verify camera settings

- Click "Show Advanced Options", then click "Connect"
- Verify that the camera settings are configured correctly. See **VISIX Camera Recommended Settings** below.



2.1 VISIX Camera Recommended Settings

Main Stream Settings					VIGIL Server Settings
Resolution	Frame Rate (FPS)	I Frame Interval		Bitrate (Kbps)	Pre Buffer (s)
		VISIX Setup Utility (Seconds)	Web viewer (Frames)		
UXGA (1600x1200)	2	1 s	2 frames	2048	1
UXGA (1600x1200)	6	1 s	6 frames	2048	1
UXGA (1600x1200)	Full (12)	1 s	12 frames	2048	1
4CIF (704x480)	2	1 s	2 frames	512	1
4CIF (704x480)	6	1 s	6 frames	512	1
4CIF (704x480)	15	1 s	15 frames	1024	1
4CIF (704x480)	Full (22)	1 s	22 frames	1024	1
Sub Stream Settings – all camera types					
CIF	Full	1 seconds	30 frames	256	

6. Change Shutter Speed to 1/100 and PowerLine to 60Hz:

1/100 is the 3xLOGIC recommended setting for VISIX camera shutter speed for interior cameras with good lighting. 60Hz is the 3xLOGIC recommended setting for VISIX PowerLine setting in North America.

- a) Click "**Video Preview**"
- b) Click "**CCD Settings**"
 - i. Note: if the CCD Settings option is not available for the currently connected camera, use the "On Screen Menu" option for configuration of these settings.

c) Select the Exposure time "1/100"

d) Select the PowerLine "60Hz"

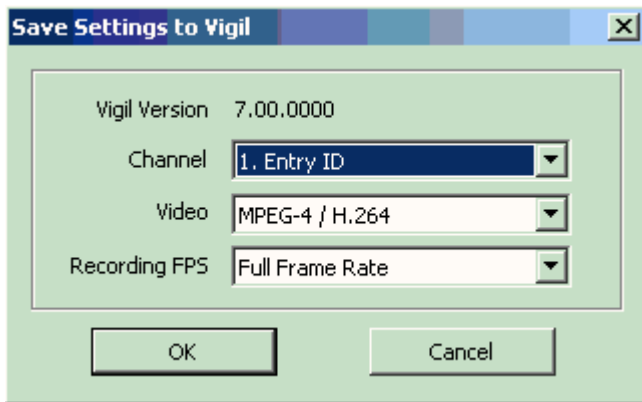
NOTE: If the image is backward or upside down, adjust the Mirror value to flip the image.

- e) Click "Save"
- f) Click "Exit"

Repeat steps 1 – 6 for each VISIX camera.

7. Click "Save to Vigil"

- a) Select the Vigil Server Channel to be used for this camera.



- b) Click OK

8. Restart Vigil Server

9. Open the Vigil Server Settings window, Camera Setup tab

10. Set "**Pre Buffer**" for each camera as per the **VISIX Camera Recommended Settings** chart above.

11. Click **OK**

3 Appendix A – CCD Settings Configuration using On-Screen Menu

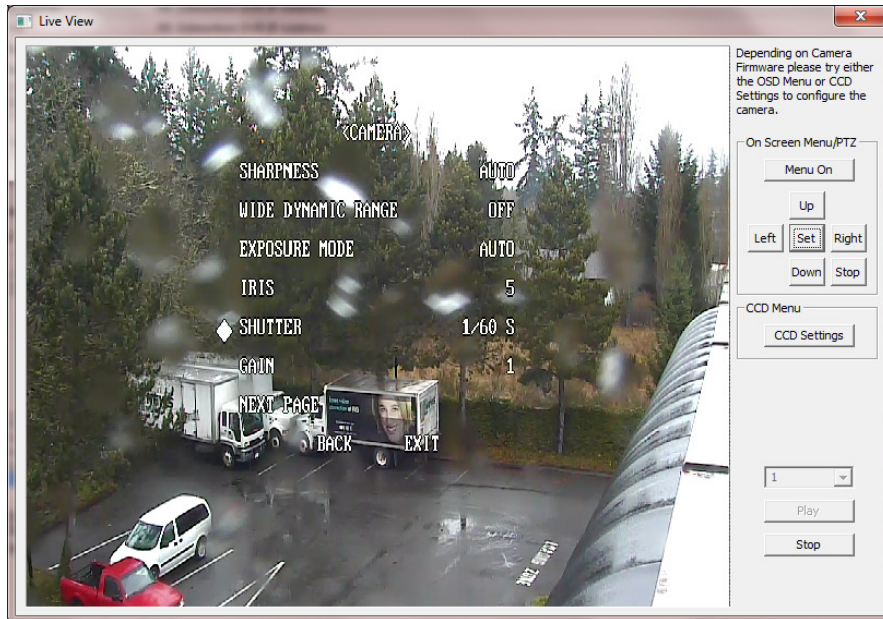
3.1 How to adjust Exposure Time and PowerLine settings using the camera On-Screen Menu

Note: In the camera web viewer, the "Exposure Time" setting is called "Shutter" and the "PowerLine" setting is called "Flicker Control". Other settings available in the camera on-screen menu can be configured in this area.

1. In VISIX Setup Utility, click **Video Preview**
2. **Change Shutter Speed to 1/100:** (see sample image below)
 - a) Click "Menu On"
 - b) Using the "Up" and "Down" buttons to navigate and the "Set" button to select an option:

Note: Menu options may not be exactly as shown depending on the model of camera selected.

- i. Select <SYSTEM SETTINGS>
- ii. Select <CAMERA>
- iii. Select <NEXT PAGE>
- iv. Select <CAMERA>
- v. Select <NEXT PAGE>
- vi. Change SHUTTER to 1/100 S (or desired shutter speed)



- vii. Change FLICKER CONTROL to 60Hz
- viii. Navigate down to Exit
- ix. Click Set to Exit

4 Contact Information

If you require more information, or if you have any questions or concerns, please contact 3xLogic Technical Support:

Toll Free (North America): 1-877-3XLOGIC (1-877-395-6442)

Email: support@3xlogic.com

Online: www.3xlogic.com