

3XLOGIC

Tech Tip 090028

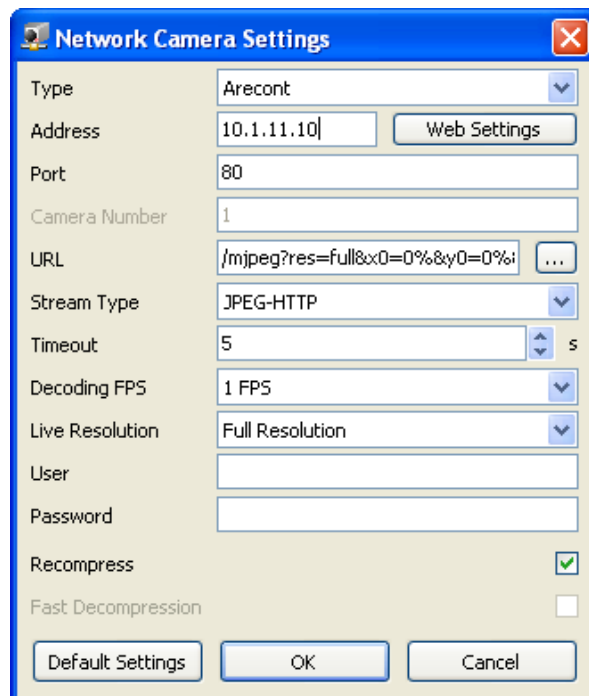
Arecont Setup Guide

| | |
|--------------------------|--|
| Tech Tip Number: | 090028 |
| Date: | October 26, 2009 |
| Product Affected: | Vigil Server version 6.00 or higher. |
| Purpose: | This bulletin helps users to find the model number and resolution of their Arecont network camera and how to configure the camera in Vigil Server based on that information. |

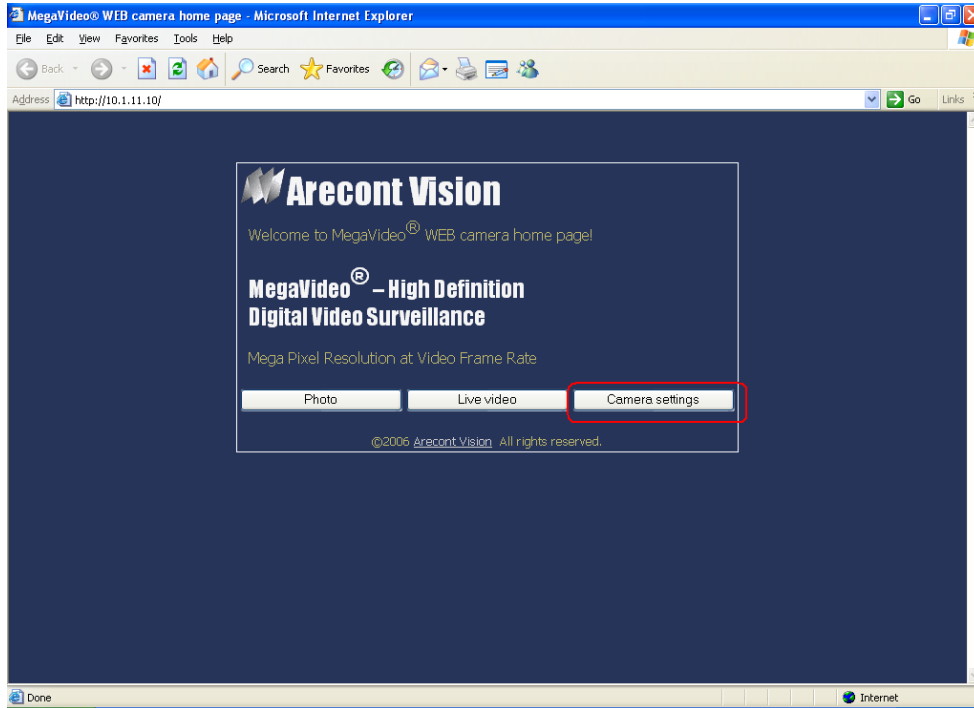
1 Setting up Arecont Cameras with the Correct Stream Type

Take the following steps to properly add and configure your Arecont camera:

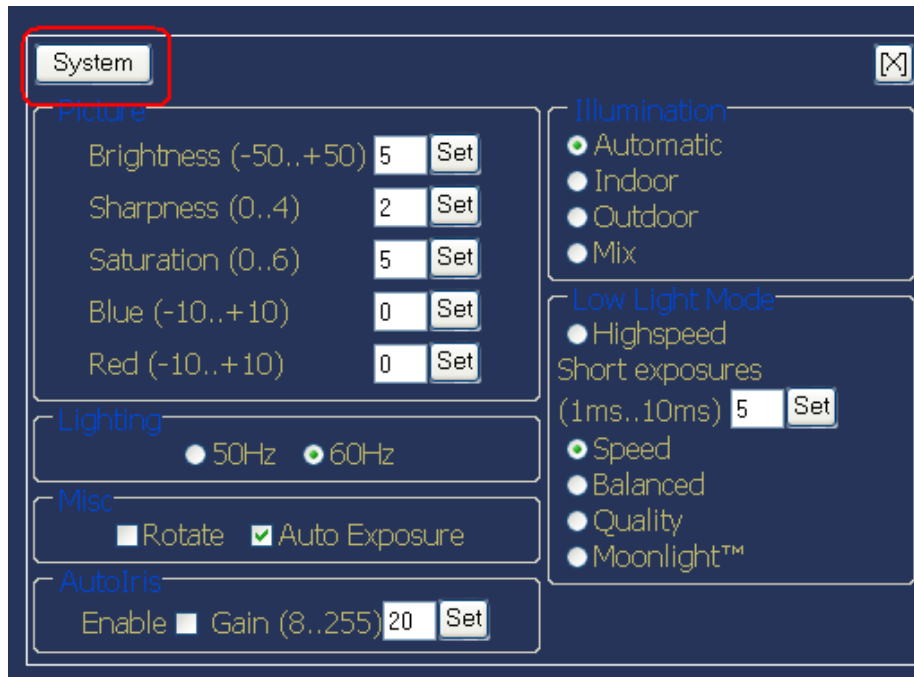
1. Go to Vigil Server DVR *Settings* > *Camera Setup* tab and select the channel you would like to setup the Arecont camera on.
2. Check the *Network Camera* feature and click the *Settings...* button to open the Network Camera Settings window.



3. In the Type drop-down menu, select "Arecont".
4. Type in the IP address of the Arecont camera in the *Address* box.
5. Click the *Web Settings* button to open the Arecont camera settings in Internet Explorer.
- 6a. If this window displays, take the following steps i-iii. If this window does not display, move on to step 6b.



- i. Click the *Camera Settings* button.
- ii. Click the *System* button.



iii. In the *Camera type* box, you will see a four digit number. This is the camera model number; please make a note of it.

System

Camera information

| | |
|-------------|-------------------|
| Camera type | 1300 |
| Firmware | 62704 |
| JPEG engine | 61601 |
| Net version | 50712 |
| MAC address | 00-50-C2-3B-62-08 |

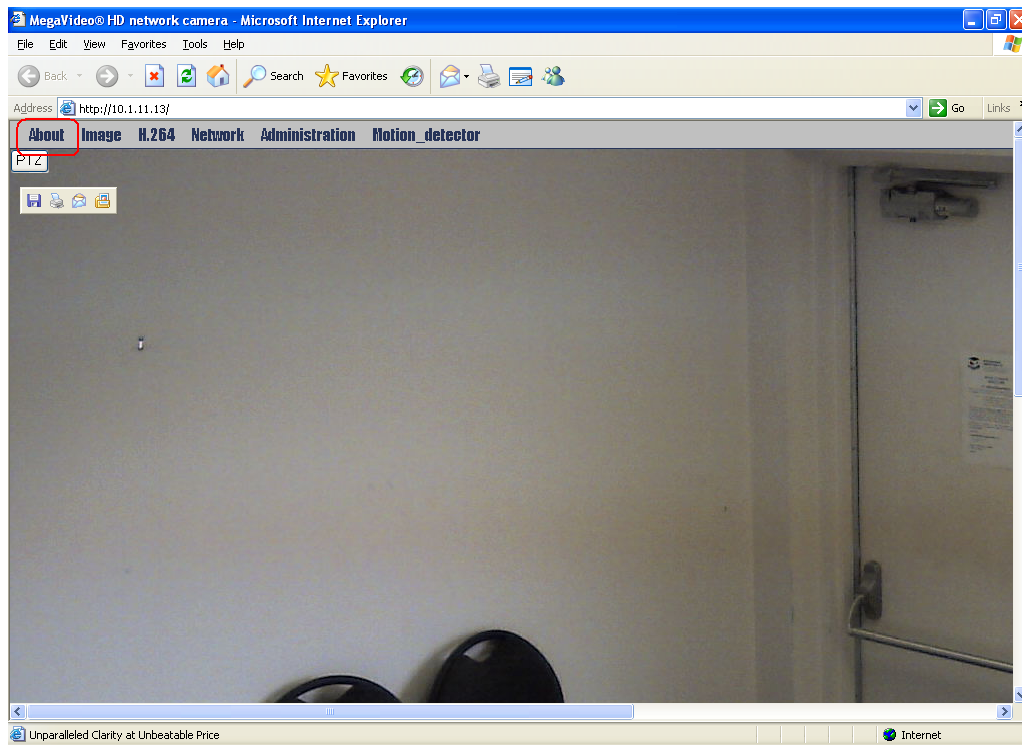
Administration

User **admin** password
confirmation

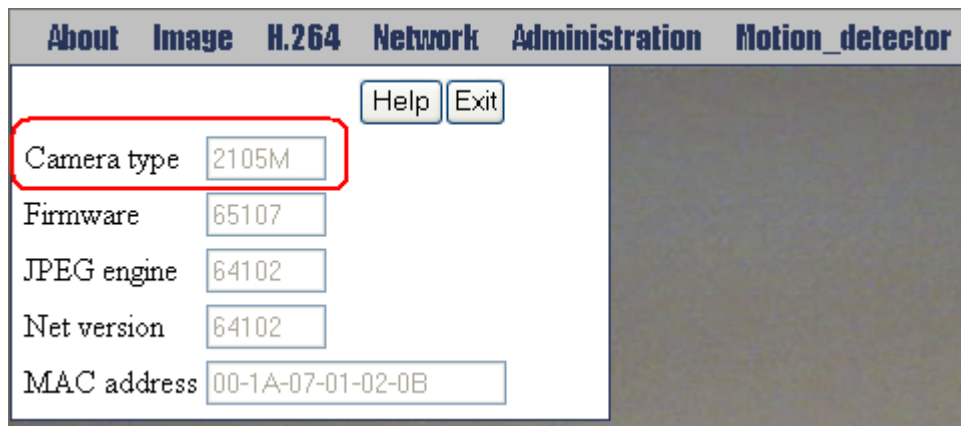
User **viewer** password
confirmation

©2006 Arecont Vision All rights reserved.

6b. If this window displays, take the following steps i-ii. If you have already completed step 6a, then carry on to step 7.



- i. Click *About*.
- ii. In the *Camera type* box, you will see a four digit number. This is the camera model number; please make a note of it.



7. Now, return to the Vigil Server Network Camera Settings window.
8. If your model number ends with the number 5, then the camera supports H264 streaming. Select "H264" in the *Stream Type* drop-down menu.

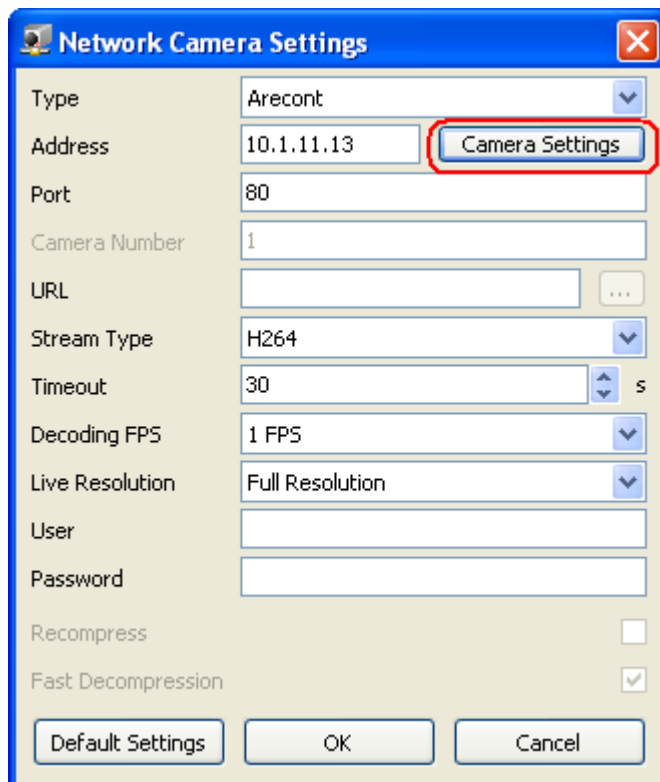
If your model number ends with the number 0, then the camera does not support H264 streaming. Select "JPEG-HTTP" in the *Stream Type* drop-down menu.
9. Click *OK* to the Network Camera Settings window, and then click *Apply* to the DVR Settings window.
10. Look at the camera preview in the DVR Settings > Camera Setup tab.
If the camera image looks as expected, then the configuration is complete. If the camera image has the wrong aspect ratio, then continue to Section 2: Adjusting the Camera Image.

2 Adjusting the Camera Image

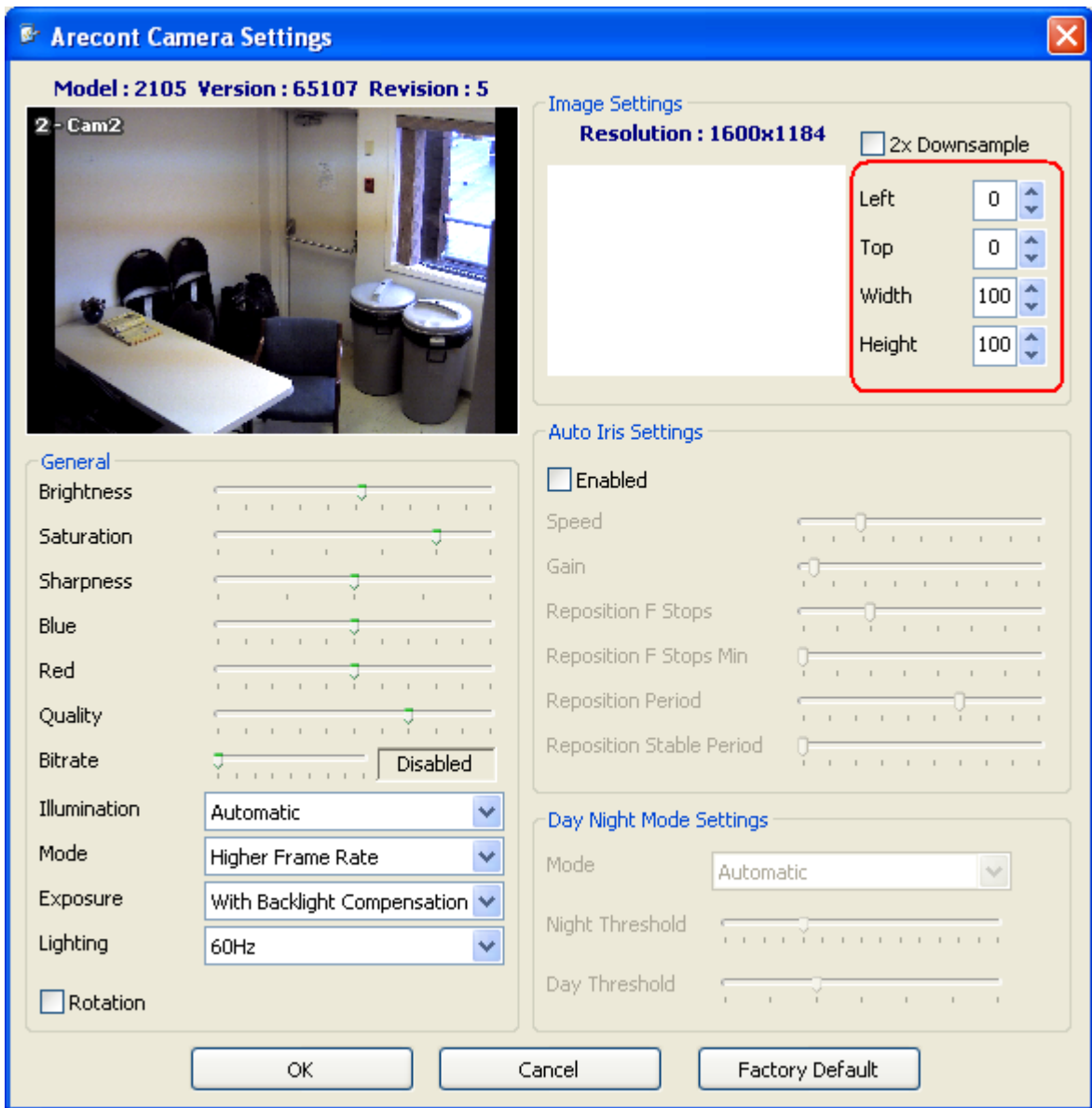
2.1 Changing the Aspect Ratio – H264

If the camera image has the wrong aspect ratio and it is set to **H264** stream:

1. Click the *Settings...* button to open the Network Camera Settings window.
2. Click the *Camera Settings* button to open the Arecont Camera Settings window.



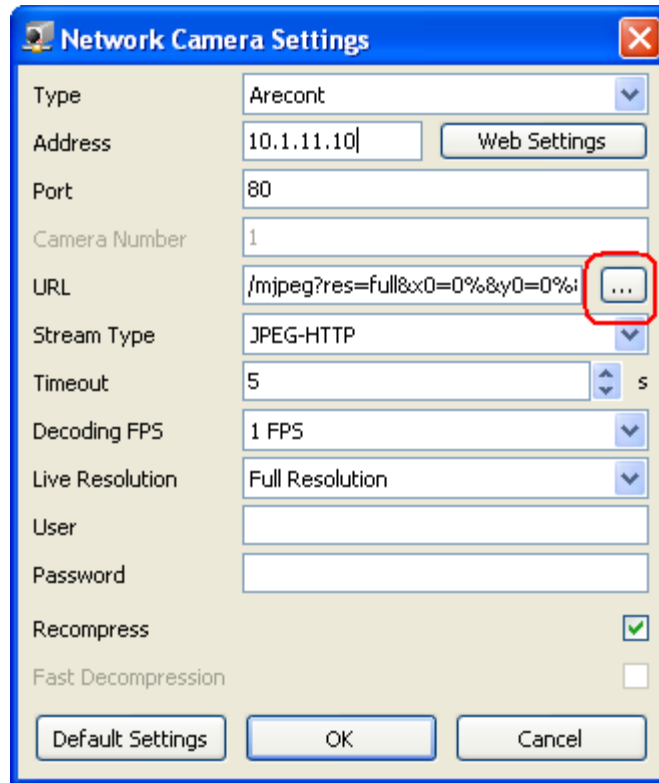
3. Use the *Left*, *Top*, *Width* and *Height* fields to adjust the camera image. The camera preview in the top left corner of the Arecont Camera Settings window will update as you make adjustments. Once the camera image looks as expected click *OK*.



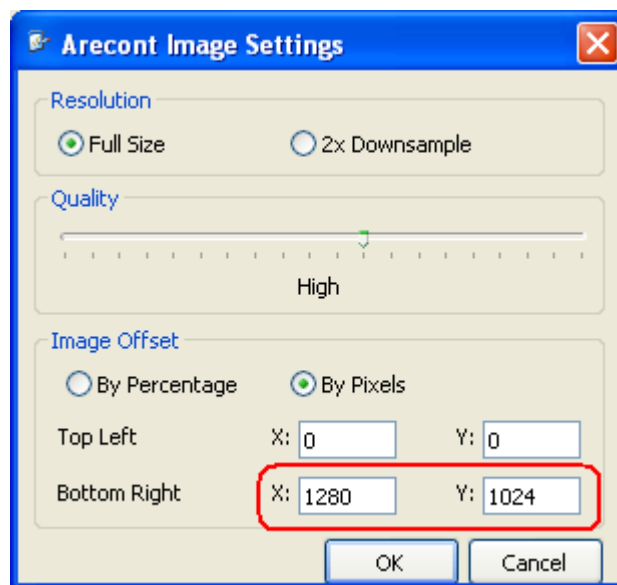
2.2 Changing the Aspect Ratio – JPEG-HTTP

If the camera image has the wrong aspect ratio and it is set to **JPEG-HTTP** stream:

1. Click the *Settings...* button to open the Network Camera Settings window.
2. Click the ... button beside the *URL* box to open the Arecont Image Settings window.



3. In the *Image Offset* section, select "By Pixels".



4. In the *Bottom Right X* and *Y* boxes, enter the correct values for your Arecont model. These numbers depend on how many megapixels your camera model has. Please see the chart below for the correct X and Y values for each Arecont model.

For your convenience, Arecont camera models are listed below showing the recommended *Stream Type*, megapixels and Image Offset values:

| Model # | Recommended Stream Type | Megapixels | Image Offset Values: X, Y |
|---------------|-------------------------|------------|---------------------------|
| AV1355 Series | H264 | 1.3 | N/A |
| AV2155 Series | H264 | 2 | N/A |
| AV3155 Series | H264 | 3 | N/A |
| AV5155 Series | H264 | 5 | N/A |
| AV1300 Series | JPEG-HTTP | 1.3 | 1280, 1024 |
| AV1305 Series | H264 | 1.3 | N/A |
| AV2100 Series | JPEG-HTTP | 2 | 1600, 1200 |
| AV2105 Series | H264 | 2 | N/A |
| AV3100 Series | JPEG-HTTP | 3 | 2048, 1536 |
| AV3105 Series | H264 | 3 | N/A |
| AV5100 Series | JPEG-HTTP | 5 | 2592, 1920 |
| AV5105 Series | H264 | 5 | N/A |
| AV8180 | JPEG-AV8180/8360 | 8 | N/A |
| AV8185 | JPEG-AV8180/8360 | 8 | N/A |
| AV8360 | JPEG-AV8180/8360 | 8 | N/A |
| AV8365 | JPEG-AV8180/8360 | 8 | N/A |

If you are experiencing any problems, please use the contact information below to contact technical support for assistance.

Contact Information

If you require more information, or if you have any questions or concerns, please contact 3xLogic Technical Support:

Toll Free (North America): 1-877-3XLOGIC (1-877-395-6442)

Email: support@3xlogic.com

Online: www.3xlogic.com

For a complete listing of Service Bulletins, please go to <http://www.3xlogic.com>