

## VIGIL CLIENT™ Remote workstation

### VIGIL CLIENT™

The VIGIL CLIENT™ workstation is a Windows based PC designed to remotely connect to any number of VIGIL™ brand Digital Video Recorders. It can be configured to view live video, POS, playback recorded footage, export still or motion footage, listen to audio and control connected cameras from virtually any location over IP networks.

#### Key Features and Benefits

- Simultaneously view live video from multiple sites up to 32 cameras
- Unlimited site software license
- Download, store, and copy recorded video from VIGIL™ DVR's onto media such as hard drive, DVD, Memory stick or CD
- Remotely configure VIGIL™ DVR settings such as frame rate, resolution, camera brightness, contrast, hue and other image management
- Microsoft Windows 2000™, XP™ and VISTA™ compatible (XP Standard)
- Design Graphical site maps for detailed facility plans and quick access to DVR's and cameras
- Compatible with all VIGIL brand Digital Video Recorders
- Advanced alarm interface for automatic notification and display of real-time video as well as playback of pre and post alarm recording
- Rapid video retrieval based on time or date, alarm event, motion with smart search or POS data
- Supports two way audio and remote chat function
- Optional analog outputs (2-4) for live and playback display

#### FOUR CASE STYLES

LT-Mini tower



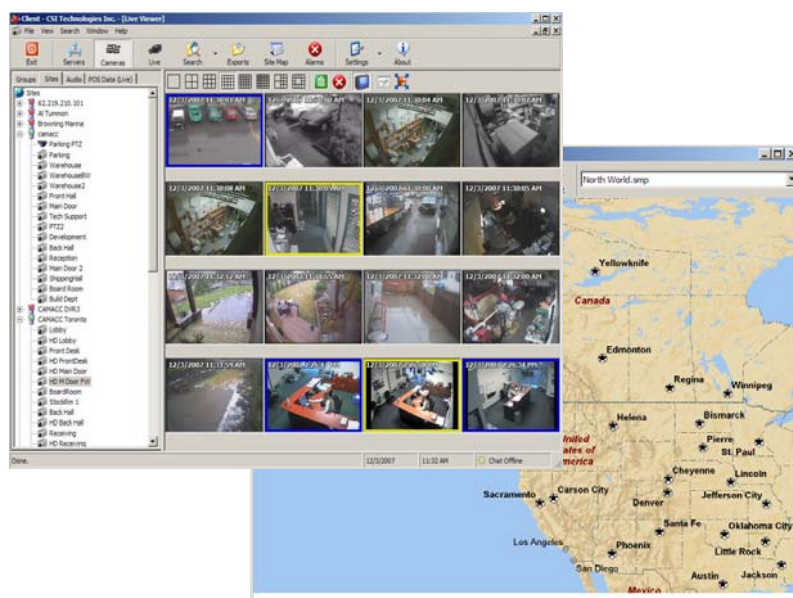
WM-Wall mount



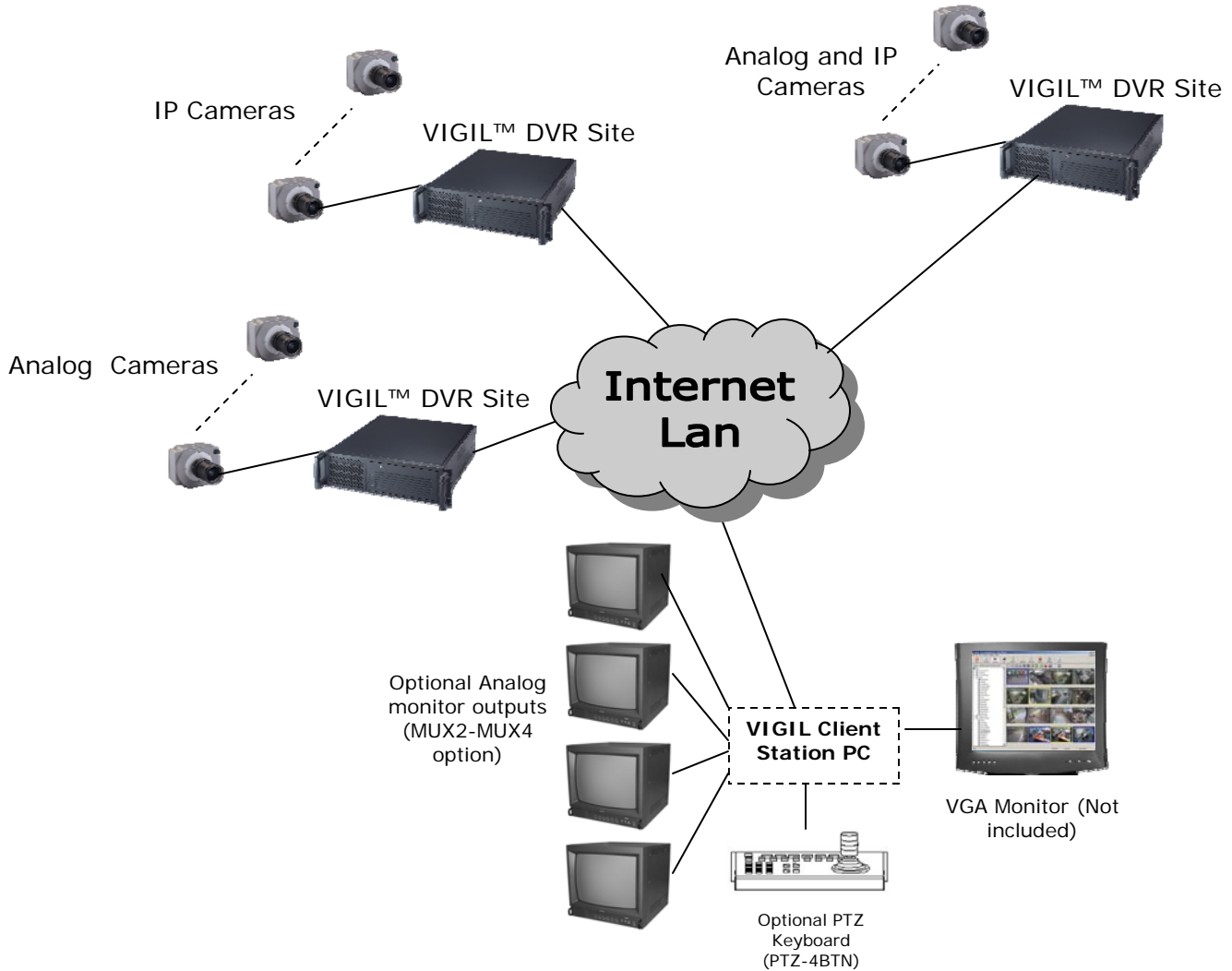
CC-Mini Cube



CO-Commercial 19" rack



# Technical Specifications VIGIL CLIENT™ series



## SAMPLE SYSTEM CONFIGURATION

### Model Specifications

VGLC-Series

### Connectivity

- LAN/WAN: 10/100/1000 Ethernet
- Connector (LAN/WAN): RJ-45

### Environmental

- 50-95Deg F (10-35Dec C) 20-80% noncondensing humidity

### Warranty

- 3 years, 1 year for hard drive
- CSA Approval

### Hardware

- Windows XP, \*XP Embedded
- Internal 36 GB Operation System
- 500GB to 5000GB Video Storage
- Internal DVDRW
- Pentium 4 up to 3.6GHz, 1000 MB RAM, 32 MB graphic card

### Electrical

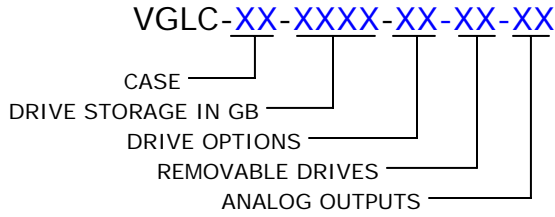
- Power source: 115-120 VAC; 50-60 Hz switch able, maximum 540W

### Physical

(LT) Tower Case - Approx. weight: 15.86kg (35lbs) - (with 1 terabytes)  
(CC) Cube Case - Approx. weight: 9.07 (20lbs) - (500GB)  
(C) Rack Mount Case - Approx. weight: 13.06KG (30lbs) - (with 1 terabytes)  
(WM) Wall Mount Case - Approx. weight: 13.06KG (30lbs) - (with 1 terabytes)

# Models Numbers VGLC series

Use the following table to create a model number for your VIGIL VGLC series client workstation. For example, the model number for a VIGIL Client station in a commercial 19" rack mount chassis with 1000GB of video drive storage and 10 raid five compliant drives and four analog monitor outputs the part number would be **VGLC-CO-1000-R-10-04**



## Commercial case series

Dimensions: 482mm (W) x 502mm (D) x 178mm (H) (19in x 19.75in x 7in)



| CASE              | DRIVE STORAGE IN GB | DRIVE OPTIONS     | NUMBER OF REMOVABLE DRIVES | ANALOG MONITOR OUTPUTS |
|-------------------|---------------------|-------------------|----------------------------|------------------------|
| CO-Commercial 19" | 500                 | D-Removable       | 05                         | 02                     |
|                   | 820                 | R-RAID5 Removable | 10                         | 04                     |
|                   | 1000                | 0-Internal        | 00-N/A                     | 00-N/A                 |
|                   | 1500                |                   |                            |                        |
|                   | 2000                |                   |                            |                        |
|                   | 2500                |                   |                            |                        |
|                   | 3000                |                   |                            |                        |
|                   | 3500                |                   |                            |                        |
|                   | 4000                |                   |                            |                        |
|                   | 4500                |                   |                            |                        |
| 5000              |                     |                   |                            |                        |

## Mini Tower case series

Dimensions: 180mm (W) x 352mm (D) x 365mm (H) (7.1in x 13.9in x 14.4in)



| CASE          | DRIVE STORAGE IN GB | DRIVE OPTIONS | NUMBER OF REMOVABLE DRIVES | ANALOG MONITOR OUTPUTS |
|---------------|---------------------|---------------|----------------------------|------------------------|
| LT-Mini tower | 500                 | 0-Internal    | 00-N/A                     | 02                     |
|               | 820                 |               |                            | 04                     |
|               | 1000                |               |                            | 00-N/A                 |

## Mini Cube case series

Dimensions: 220mm (W) x 325mm (D) x 210mm (H) (8.66in x 12.8in x 8.28in)



| CASE         | DRIVE STORAGE IN GB | DRIVE OPTIONS | NUMBER OF REMOVABLE DRIVES | ANALOG MONITOR OUTPUTS |
|--------------|---------------------|---------------|----------------------------|------------------------|
| CC-Cube Case | 500                 | 0-Internal    | 00-N/A                     | 02                     |
|              | 820                 |               |                            | 04                     |
|              | 1000                |               |                            | 00-N/A                 |

## Wall Mount case series

Dimensions: 405mm (W) x 169mm (D) x 525mm (H) (15.9in x 6.6in x 20.7in)



| CASE          | DRIVE STORAGE IN GB | DRIVE OPTIONS | NUMBER OF REMOVABLE DRIVES | ANALOG MONITOR OUTPUTS |
|---------------|---------------------|---------------|----------------------------|------------------------|
| WM-Wall Mount | 500                 | 0-Internal    | 00-N/A                     | 02                     |
|               | 820                 |               |                            | 04                     |
|               | 1000                |               |                            | 00-N/A                 |

## Miscellaneous

| PART NUMBER                  | Description  |
|------------------------------|--|
| <a href="#">PTZ-4BTN</a>     | <a href="#">USB joystick controller with four programmable buttons</a> |
| <a href="#">VGL-SED-3320</a> | <a href="#">Single channel external transcoder for analog output</a>   |

