

## VIGIL GATEKEEPER<sup>TM</sup> Graphical touch

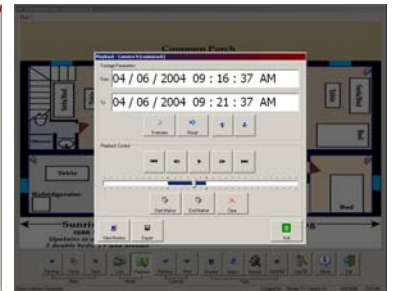
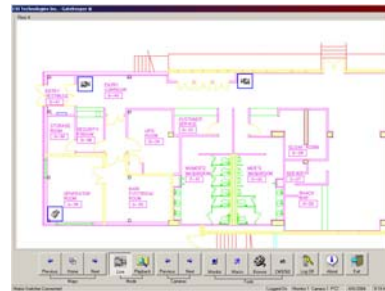
### VIGIL<sup>TM</sup> GATEKEEPER Station

The VIGIL<sup>TM</sup> GATEKEEPER graphical control station is designed to integrate with the VIGIL<sup>TM</sup> brand Digital Video Recorder and the Pelco<sup>TM</sup> CM9740/60/70/80 series matrix switch. Utilizing a touch screen monitor, It supports facility maps and virtual keyboard for control of analog or IP based cameras. This easy to use interface is commonly used in Airports, Casino's, and other large scale facilities.

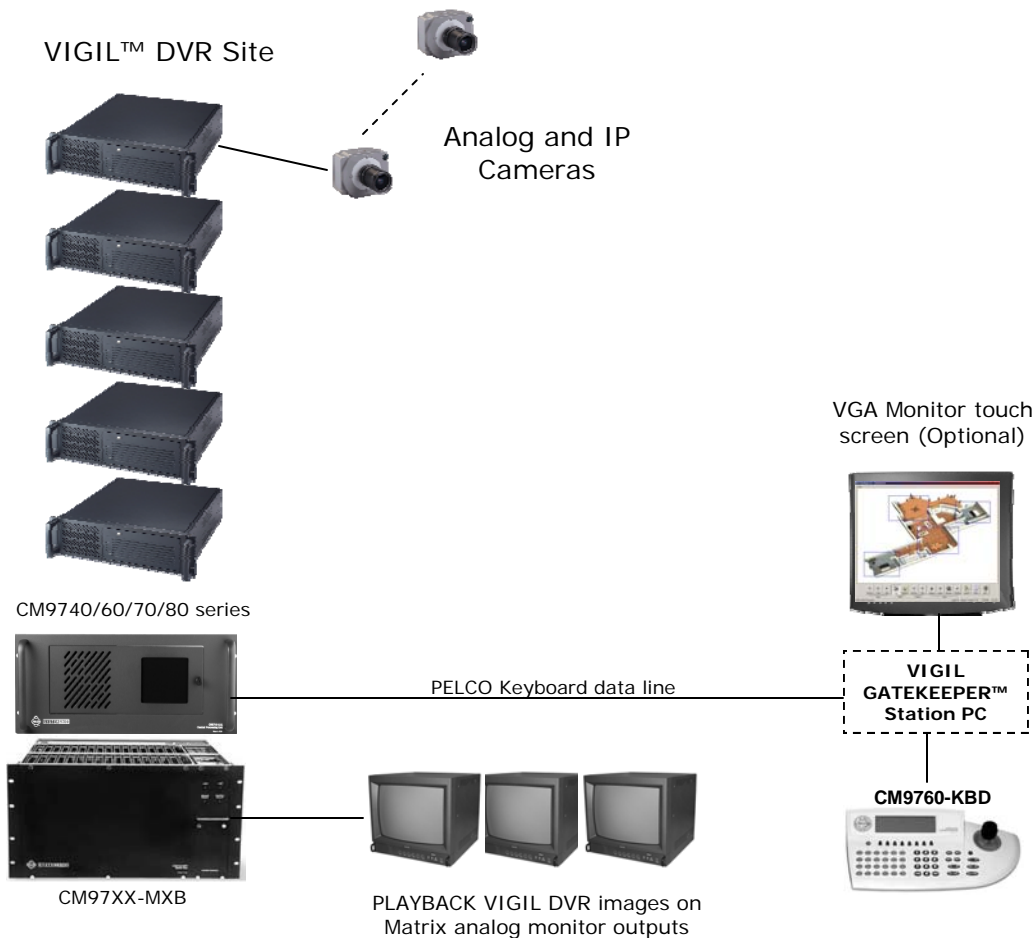


#### Key Features and Benefits

- Configured to emulate the Pelco<sup>TM</sup> CM9760 keyboard and replaces it with a graphical touch screen keyboard and optional external joystick
- Can be configured for loop through of existing Pelco<sup>TM</sup> CM-9760 keyboards for direct video playback control of VIGIL brand DVR,s on the Pelco<sup>TM</sup> matrix switch monitor outputs
- Supports facility maps for live and playback of both analog and IP based cameras via touch screen graphical, no need to remember camera numbers
- Export recorded footage to a central file storage location viewable by all GATEKEEPER stations
- Stream live images from VIGIL brand DVR's directly to the VIGIL Gatekeeper station
- Video export audit log
- Direct playback video on the existing analog matrix monitor outputs
- Simply review of any camera via optional touching screen



# Technical Specifications VIGIL GATEKEEPER series



## SAMPLE SYSTEM CONFIGURATION

### Model Specifications

GKP-Series

### Connectivity

- LAN/WAN: 10/100/1000 Ethernet
- Connector (LAN/WAN): RJ-45

### Environmental

- 50-95Deg F (10-35Dec C) 20-80% noncondensing humidity

### Warranty

- 3 years, 1 year for hard drive
- CSA Approval

### Electrical

- Power source: 115-120 VAC; 50-60 Hz switch able, maximum 540W

### Hardware

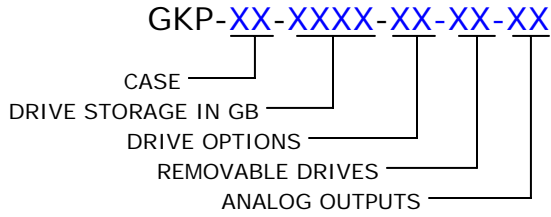
- Windows XP, \*XP Embedded
- Internal 36 GB Operation System
- 500GB to 5000GB Video Storage
- Internal DVDRW
- Pentium 4 up to 3.6GHz, 1000 MB RAM, 32 MB graphic card
- Four RS-422 serial ports for connection to Pelco Matrix switch

### Physical

- (LT) Tower Case - Approx. weight: 15.86kg (35lbs) - (with 1 terabytes)
- (CC) Cube Case - Approx. weight: 9.07 (20lbs) - (500GB)
- (C )Rack Mount Case - Approx. weight: 13.06KG (30lbs) - (with 1 terabytes)
- (WM) Wall Mount Case - Approx. weight: 13.06KG (30lbs) - (with 1 terabytes)

# Models Numbers GKP series

Use the following table to create a model number for your VIGIL GKP series client workstation. For example, the model number for a VIGIL Gatekeeper™ station in a commercial 19" rack mount chassis with 1000GB of video drive storage and 10 raid five compliant drives and four analog monitor outputs the part number would be **GKP-CO-1000-R-10-04**



## Commercial case series

Dimensions: 482mm (W) x 502mm (D) x 178mm (H) (19in x 19.75in x 7in)



CASE	DRIVE STORAGE IN GB	DRIVE OPTIONS	NUMBER OF REMOVABLE DRIVES	ANALOG MONITOR OUTPUTS
CO-Commercial 19"	500	D-Removable	05	02
	820	R-RAID5 Removable	10	04
	1000	0-Internal	00-N/A	00-N/A
	1500			
	2000			
	2500			
	3000			
	3500			
	4000			
	4500			
5000				

## Mini Tower case series

Dimensions: 180mm (W) x 352mm (D) x 365mm (H) (7.1in x 13.9in x 14.4in)



CASE	DRIVE STORAGE IN GB	DRIVE OPTIONS	NUMBER OF REMOVABLE DRIVES	ANALOG MONITOR OUTPUTS
LT-Mini tower	500	0-Internal	00-N/A	02
	820			04
	1000			00-N/A

## Mini Cube case series

Dimensions: 220mm (W) x 325mm (D) x 210mm (H) (8.66in x 12.8in x 8.28in)



CASE	DRIVE STORAGE IN GB	DRIVE OPTIONS	NUMBER OF REMOVABLE DRIVES	ANALOG MONITOR OUTPUTS
CC-Cube Case	500	0-Internal	00-N/A	02
	820			04
	1000			00-N/A

## Wall Mount case series

Dimensions: 405mm (W) x 169mm (D) x 525mm (H) (15.9in x 6.6in x 20.7in)



CASE	DRIVE STORAGE IN GB	DRIVE OPTIONS	NUMBER OF REMOVABLE DRIVES	ANALOG MONITOR OUTPUTS
WM-Wall Mount	500	0-Internal	00-N/A	02
	820			04
	1000			00-N/A

## OPTIONS

PART NUMBER	Description
VGL-GK-PELCO-CBL	Pelco Gatekeeper cable assembly
VGL-GK-15TS	15" Touch screen monitor
PTZ-4BTN	USB joystick controller with four programmable buttons
232-422CONV	RS232—RS422 port powered data converter

