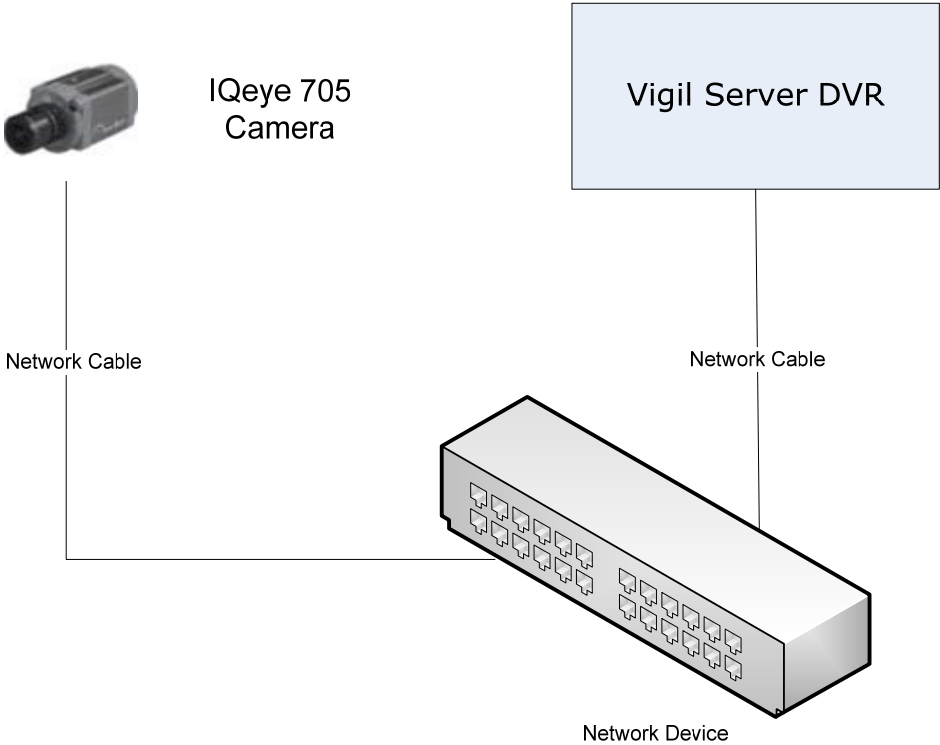


1 Basic Hardware Configuration Layout

The IQeye IP Camera communicates with the Vigil Server DVR over the network. Please note that in order to avoid unnecessary network traffic, connect the Vigil Server DVR and the IP Cameras to the same network device when possible.



Note: To avoid unnecessary network traffic, connect the Vigil Server DVR and the IP Cameras to the same network device when possible.

2 Vigil Server Configuration for 1 FPS High Resolution Stream and Maximum FPS Low Resolution Stream (requires two camera inputs)

Configure Vigil Server Settings for IQEye High Resolution Stream

1. In **Vigil Server**, click on **Settings** and then select an available camera input on the left
2. Enable the **Network Camera** checkbox on the right
3. In the **Set Speeds** window, select the **1 FPS** from the dropdown lists for Constant, Motion and Alarm, and click **OK**
4. In the **Network Camera** section, click the **Settings** button and enter the following settings:

Type: IQEye

Address: Enter the address of the IQEye network camera

Decoding FPS: 1 FPS

The screenshot shows the 'Network Camera Settings' dialog box. The fields are as follows:

Type	IQEye
Address	12.34.56.78
Port	80
Camera Number	1
URL	/now.jpg?snap=push1?ds=1
Stream Type	JPEG
Timeout	30 s
Decoding FPS	1 FPS
Live Resolution	Full Resolution
User	root
Password	*****
Recompress	<input type="checkbox"/>
Fast Decompression	<input checked="" type="checkbox"/>

5. Click **OK** on the *Network Camera Settings* window
6. Click **OK** on the *DVR Settings* window
7. Please check to ensure that the camera is displayed in the live viewer and also in the playback window at the correct FPS.

Configure Vigil Server Settings for IQEye Low Resolution Stream

8. In **Vigil Server**, click on **Settings** and then select an available camera input on the left
9. Enable the **Network Camera** checkbox on the right
10. In the **Set Speeds** window, select **30 FPS** from the dropdown lists for Constant, Motion and Alarm, and click **OK**
11. In the **Network Camera** section, click the **Settings** button and enter the following settings:

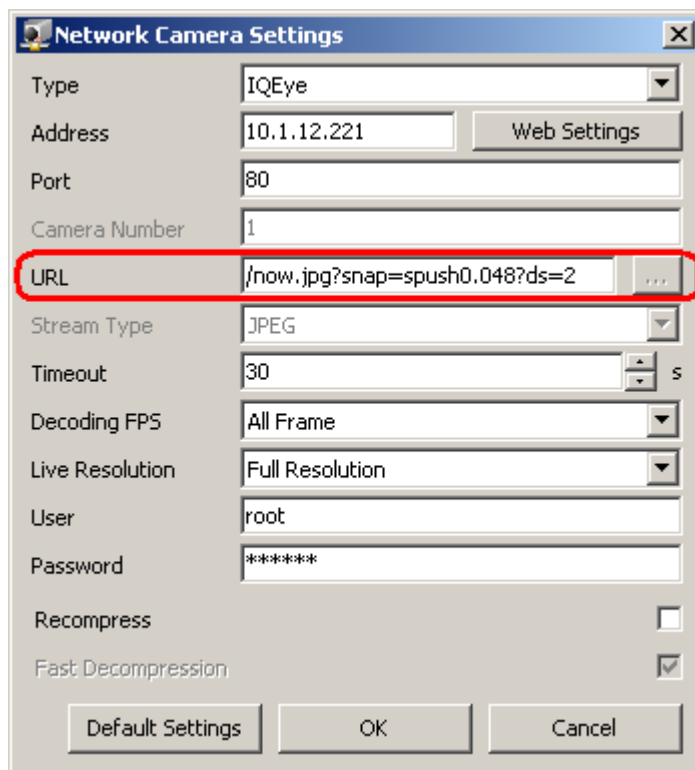
Type: IQEye

Address: Enter the address of the IQEye network camera

Decoding FPS: All Frames

URL: To reduce the image size to half of the original size, change the last digit of the URL to 2.

To reduce the image size to a quarter of the original size, change the last digit of the URL to 4.

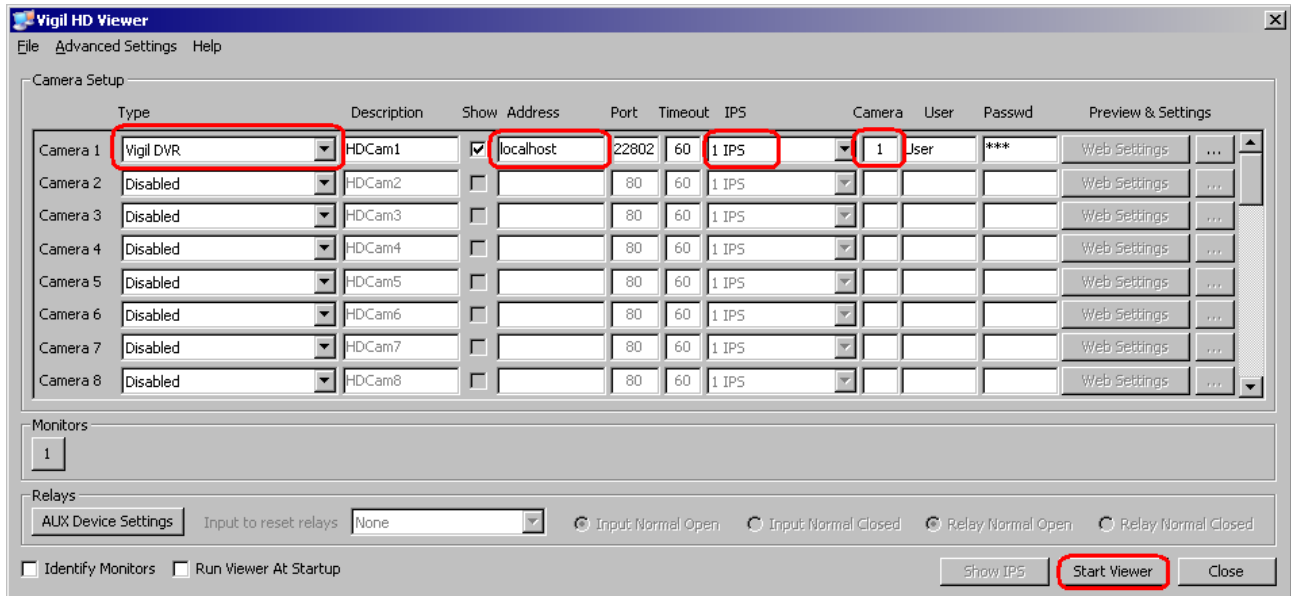


The screenshot shows the 'Network Camera Settings' dialog box. The 'URL' field is highlighted with a red rectangle and contains the text '/now.jpg?snap=spush0.048?ds=2'. Other fields include 'Type' (IQEye), 'Address' (10.1.12.221), 'Port' (80), 'Camera Number' (1), 'Stream Type' (JPEG), 'Timeout' (30), 'Decoding FPS' (All Frame), 'Live Resolution' (Full Resolution), 'User' (root), 'Password' (*****), 'Recompress' (unchecked), and 'Fast Decompression' (checked). Buttons for 'Default Settings', 'OK', and 'Cancel' are at the bottom.

12. Click **OK** on the *Network Camera Settings* window
13. Click **OK** on the *DVR Settings* window
14. Please check to ensure that the camera is displayed in the live viewer and also in the playback window at the correct FPS.

3 How to Configure the Vigil HD Viewer Software to display IQeye IP Cameras – always use the Vigil-DVR Network Camera Type

1. Open the HD Viewer window by double clicking the HDViewer icon in the system tray
2. For cameras that are being recorded on the Vigil Server system:
3. **Change the camera type to *Vigil DVR***
4. Set the IPS dropdown to 1 IPS
5. Set the Address to the IP address of the Vigil DVR. Use the IP Address *localhost* if the Vigil HD Viewer software is installed on the Vigil DVR system. Enter the camera number as it appears in the Vigil Server software.



6. Click *Start Viewer* to run HD Viewer and ensure that the correct cameras is displayed

Important: Repeat steps 3 – 6 for each IQeye IP Camera

Click Start > Shut Down > Restart and ensure that all programs start properly and that the cameras are displayed correctly in both Vigil Server and HD Viewer live screens. Playback video in Vigil Server to ensure that it is being recorded correctly.

Contact Information

If you require more information, or if you have any questions or concerns, please contact 3xLogic Technical Support:
Toll Free (North America): 1-877-3XLOGIC (1-877-395-6442)
Email: support@3xlogic.com
Online: www.3xlogic.com