

Tech Tip 150004

Using VIGIL Active Directory

Tech Tip #:	150004-1
Date:	August 28 th , 2015
Product Affected:	VIGIL Server 8, VIGIL Active Directory
Purpose:	The purpose of this document is to educate the users on the basic usage of VIGIL Active Directory.

1	INTRODUCTION	1
2	USING VIGIL ACTIVE DIRECTORY	1
3	CONTACT INFORMATION	2

1 Introduction

VIGIL Active Directory permits users to login to VIGIL Server using the same login credentials used on their local Windows domain network.

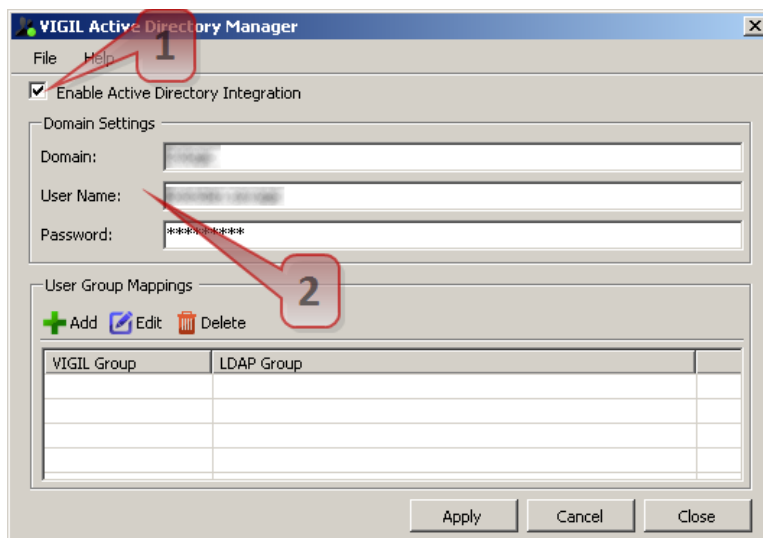
VIGIL Active Directory utility is installed alongside VIGIL Server. So long as the VIGIL Server VMS system is part of a Windows domain/work network or can communicate with the desired domain, VIGIL Active Directory will automatically detect the active user directory, and, if configured to do so, will allow login to VIGIL using existing Windows domain network user credentials.

2 Using VIGIL Active Directory

VIGIL Active Directory can be launched from the Window's *Start Menu>Program Files> VIGIL* on properly configured VIGIL VMS.

After launching, the application will open.

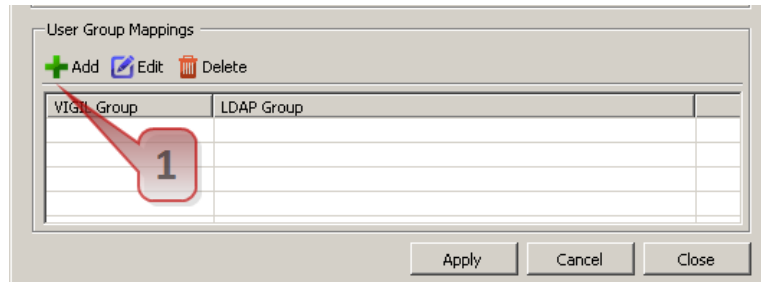
1. Click the *Enable Active Directory Integration* button
2. Enter in your domain login credentials. This will allow VIGIL to query the Windows active user directory.



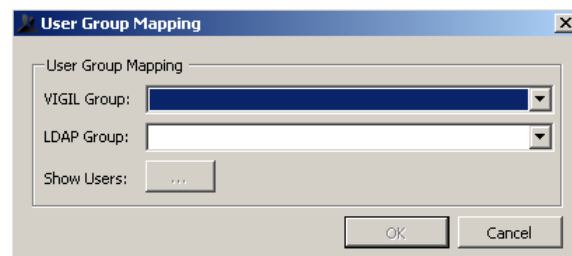
2.1 Adding a Set of User Group Mappings

Each set of User Group Mappings define which users from the Windows user directory will be allowed to login to VIGIL using their Windows domain network credentials. To add a set of user group mappings:

1. Click the *Add* Button.



This will open the User Group Mapping configuration window(pictured below.)



In this window, a user must select both a VIGIL Group and LDAP Group to configure User Group Mappings. These groups MUST be preconfigured in VIGIL and Windows.

- VIGIL Group** – This menu will feature any user groups currently configured in VIGIL. All users from the selected LDAP group will be added to chosen VIGIL Group.
- LDAP Group** – This menu features all LDAP(Lightweight Directory Access Protocol) user groups configured on the system’s Windows domain network. Users contained within the selected group will be added to the selected VIGIL Group. Please note the menu will contain several entries which are default Windows domain user groups.

Click OK to save the new User Group Mappings. If you would like to make changes to this group in the future, simply select the group from the list and select the *Edit* button. Click the ... button to preview list of users from the selected LDAP group

Note: Server logins are refreshed and updated in 2 minute intervals. LDAP Users added to VIGIL Server may take up to 2 minutes to appear in the VIGIL Server UI.



VIGIL Active Directory has been engineered for use with Windows Active Directory **ONLY**. Other technologies utilizing LDAP are not tested against VIGIL Active Directory and may not function successfully.

After creating the desired user group mapping, users belonging to the selected LDAP group should now be able to login to VIGIL Server using their Windows domain network login credentials.

3 Contact Information

If you require more information, or if you have any questions or concerns, please contact 3xLOGIC Support:

Email: helpdesk@3xlogic.com

Online: www.3xlogic.com