

VISIX 5MP Outdoor Bullet with Remote Focus (2.7-13.5mm), IR, Audio and Alarm I/O. IP67/IK9 rated

This five (5) megapixel IP camera from 3xLOGIC provides dual-streaming high-definition video at a full 2592 X 1944 pixels for video surveillance applications requiring superior clarity and detail.

The VX-5M-B-RIAWD is packed with all the features you might need for nearly any application including: motion detection; low-light day/night functionality; two-way audio and compatibility with a wide variety of standardized network protocols.

The convenient and aesthetically-pleasing bullet camera allows un-obtrusive and easy installation in a wide variety of areas. In addition, this camera is designed to continue functioning at top performance at temperatures as low as -40°C (-40°F) and as high as 50°C (122°F) allowing a wide range of applications.

Comes standard with a 2.7-13.5mm vari-focal lens providing support for most applications. Day / Night operation allows use in varying lighting conditions down to 0.06 lux and 0 lux with IR providing better night time video. Superior compatibility with all VIGIL products allowing the best performance and capabilities possible.

The VX-5M-B-RIAW is compatible with the entire VIGIL Software Suite, including direct access through VIGIL Client and our mobile app View Lite II, as well as with VIGIL Central Management for remote health monitoring and notification.

Typical Use Cases



**K-12
EDUCATION**



HEALTHCARE



**WAREHOUSE &
DISTRIBUTION**



Key Features and Benefits

VIGIL CLOUD™	✓
Lens	2.7mm-13.5mm
Resolution (Megapixels)	5 (2592 x 1944 Max.)
Variable angle of view(109° to 39°)	✓
Infrared(Low-Lighting/No-Light)	✓
H.264/H.265/MJPEG	✓
Two-Way Audio	✓
Wide Dynamic Range	120db
IP67 Weather-Resistant	✓
4 Year Warranty	✓
Base Analytics	✓
Local Storage	1TB Max. MicroSD

What's in the Box

Template Sheet
Torx Wrench
Waterproof Cap & Gasket
Screw & Anchor
Test Video Cable

Camera

Image Sensor:	1/2.8" 5.14M CMOS (Sony Starvis)
Lens	2.7~13.5mm, F1.4
Motorized?	Yes
Angle of View	D:39°~109°, H:31°~85°, V:24°~62°
Min Illum	0.06 Lux, 0Lux with IR (F1.4)
IR Range	50m
Shutter Time	1/15 ~ 1/32000
Day/Night	TDN (True Day & Night)
WDR	WDR - 120dB

Compression Standard

Video Compression	H.264, H.265, MJPEG
Bit Rate	100Kbps ~ 10Mbps
Video Streams	2592x1944p30 + 480p30

Image

Max Image Resolution	2592(H) X 1944(V)
Frame Rate	30fps

Functions

Alarm Triggers	Motion Alarm, Network disconnection, Temperature critical
Local Storage	Micro SD / SDHC / SDXC
SD Card Capacity	128GB
Audio Compression	G.711
Security Protocols	HTTPS(SSL), IP filtering, 802.1x, Digest Authentication TCP/IP, UDP, AutoIP, RTP(UDP/TCP), RTSP, NTP, HTTP, HTTPS, SSL, DNS, DDNS, DHCP, FTP, SMTP, ICMP, SNMPv1/v2/v3(MIB-2), ONVIF CGI API, ONVIF (Profile S)
System Compatibility	

Physical

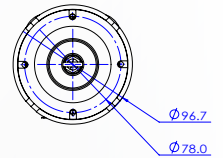
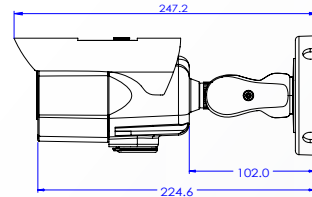
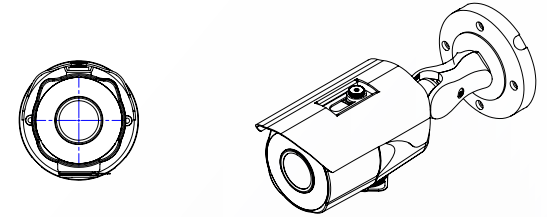
Operating Conditions	-40°C ~ 50°C (-40°F ~ 122°F)
Humidity	10~90% RH (non-condensing)
Weather Proof Rating	IP67
Impact Protection	IK9
Housing Material	Aluminum
Window Material	PC 1811, 835
Dimensions (D x H)	247.2 mm x 96.7 mm mm
Weight	0.9kg
Local Storage	1TB Max. Micro SD / SDHC / SDXC

Electrical

Power Supply	DC DC12V / POE IEEE 802.3af
Power Consumption	DC12V Max 9W PoE Max 10.5W

Certifications and Compliance

FCC Part 15, Subpart B, Class A
CAN ICES-3 (A)/NMB-3(A)
UL and ULC Safety
CE
NDA Compliant



Interface

Communication	RJ45(10/100BASE-T)
Alarm Input	1
Alarm Output	1
Video Output	1 CVBS 1.0V p-p(75ohm)
Audio Input	1[1.0Vms, 3K ohm]
Audio Output	1

Part Number

VX-5M-B-RIAW	Base Camera
VX-5M-B-RIAW-A	Add Advanced Analytics License*
VX-5M-B-RIAW-C128	VIGIL CLOUD Capable with 128GB SD Card
-C256	VIGIL CLOUD Capable with 256GB SD Card
-S128	Add All-in-One Functionality with 128GB SD Card
-S256	Add All-in-One Functionality with 256GB SD Card
-S512	Add All-in-One Functionality with 512GB SD Card
-S1TB	Add All-in-One Functionality with 1TB SD Card

Warranty

Four (4) years

Recommended Mounts

VX-POLE-BP07	Pole Mount Adapter
VX-JB-BJC07	Junction Box

* NOTE: - A advanced analytics license can be added to a Base Camera at any time to unlock advanced analytics functionality. Speak to a 3xLOGIC Sales Associate for more info.