

Guide 140005

VIGIL Port Information Guide

Guide #:	140005-3
Revised:	September 9 th , 2015
Product Affected:	VIGIL Software Suite
Purpose:	This document lists port info for all ports actively utilized by VIGIL.

1	INTRODUCTION.....	1
2	PORTS UTILIZED BY VIGIL SERVER.....	1
3	CONNECTION METHODS.....	2
4	BASIC VIGIL CONNECT TOPOLOGY DIAGRAM.....	3
5	CONTACT INFORMATION.....	3

1 Introduction

The purpose of this guide is to inform readers of the communication ports utilized by the VIGIL system. The alternative VIGIL Connect process is also outlined.

2 Ports Utilized by VIGIL Server

VIGIL Server uses 11 different ports to communicate with external networks, devices, etc, however, 3xLOGIC reserves 50 ports for each server.

By default, VIGIL Server ports are configured from 22801-22850 for the first VIGIL Server on the network, 22851-22900 for the second VIGIL Server on the network, 22901-22950 for the third VIGIL Server on the system and so on.

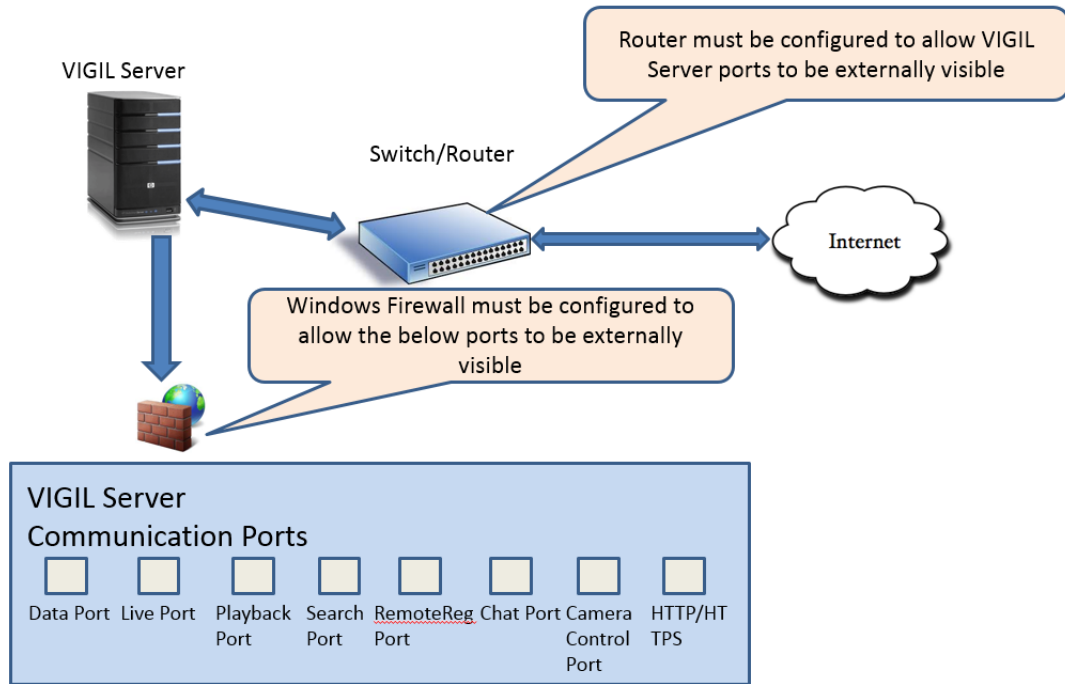
Port Number *	Protocol	Function	Description	Module
22801	TCP	Data	Main communication port, perform most functions	VIGIL.exe
22802	TCP	Live	Live video, Live Audio, Audio Talk	VIGIL.exe
22803	TCP	Playback	Playback video/audio	VIGIL.exe
22804	TCP	Remote Updates	Process remote update requests	SVCVIGILUpdate.exe
22805	TCP	Camera Control	Process camera control requests	VIGIL.exe
22806	TCP	Remote Registration	Process remote registration requests	SVCRemoteReg.exe
22807	TCP	Smart Search	Search video/audio, play back video / audio	SVCSmartSearch.exe
22808	TCP	VFS	Hard coded for VIGIL File Server(VFS)	VIGIL.exe
22809	TCP	Chat	Process text/audio chat requests	VIGIL.exe
22810	HTTP/HTTPS	HTTP/HTTPS	Process all HTTP/HTTPS requests from web, iOS, Android etc.	SVCStreamServer.exe
22811	TCP	VIGIL Media Server	Process all request from VIGIL Media Server (i.e Exports)	VIGILMediaServer.exe
22701	TCP	Diagnose	Internal Diagnose (always 22701), do not need to be forwarded.	VIGIL.exe
4111	UDP	Auto Find	For auto find VIGIL Server in Client and VCM (Always 4111)	VIGIL.exe

*If first Server configured on network.

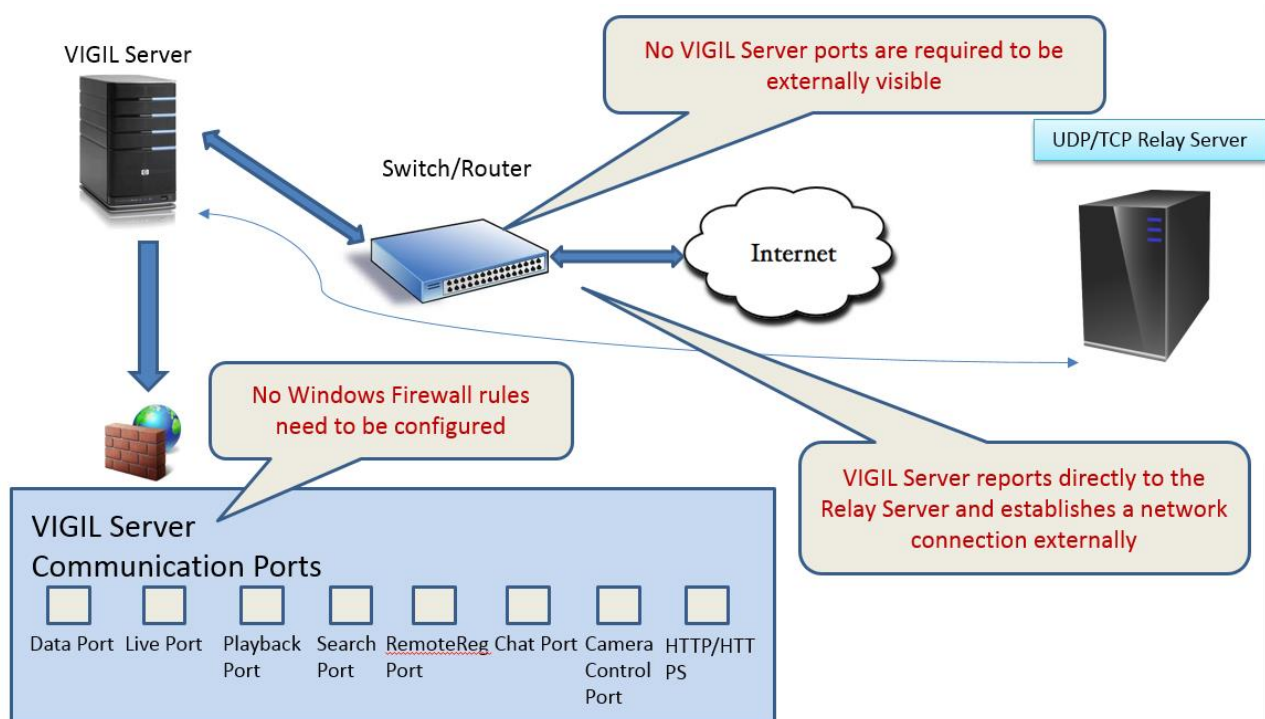
3 Connection Methods

3.1 Direct Connection Method

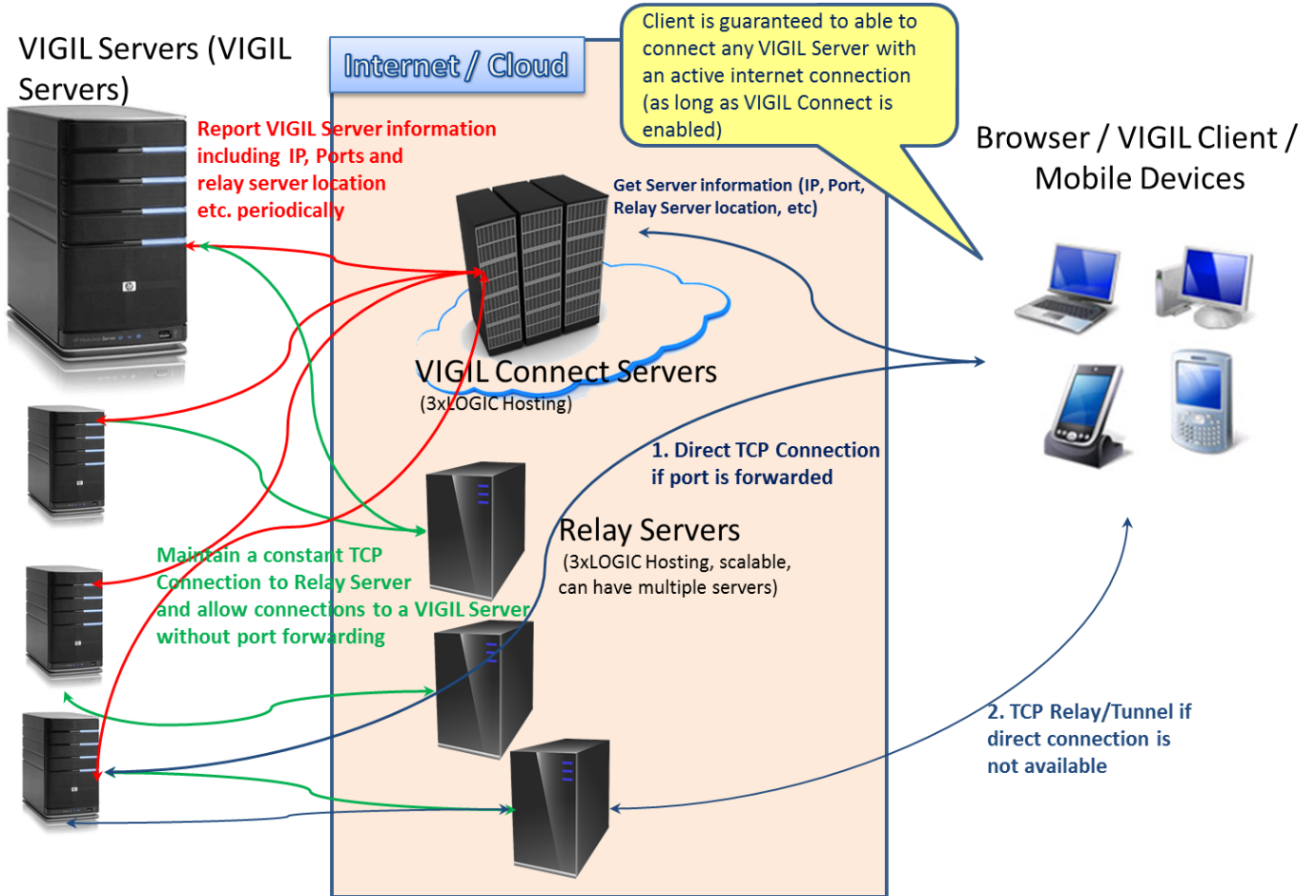
In most field applications, users will connect to a VIGIL Server directly.



3.2 VIGIL Connect Connection Method



4 Basic VIGIL Connect Topology Diagram



4.1 Security / Encryption Details

All data is secured via *Private Protocol Binary Encryption* when using VIGIL Connect.

5 Contact Information

If you require more information, or if you have any questions or concerns, please contact 3xLOGIC Support:

Email: helpdesk@3xlogic.com

Online: www.3xlogic.com