

VIGIL

Client Lite 1.5

VIGIL Server Client Software for macOS®
User Guide

VIGIL Copyright ©2019 3xLOGIC, Inc. All rights reserved.

3xLOGIC Inc.

290-12000 Pecos Street
Westminster, CO 80234
United States (303) 430-1969

Disclaimer

Information in this document is subject to change without notice and does not represent a commitment on the part of 3xLOGIC Inc. The software and/or databases described in this document are furnished under a license agreement or nondisclosure agreement. They may be used or copied only in accordance with the terms of the agreement. It is against the law to copy the software on any medium except as specifically allowed in the license or nondisclosure agreement. The purchaser may make one copy of the software for backup purposes. No part of this manual and/or databases may be reproduced or transmitted in any form or by any means, electronic or mechanical, including (but not limited to) photocopying, recording, or information storage and retrieval systems, for any purpose other than the purchaser's personal use, without the express written permission of 3xLOGIC Inc.

macOS is a trademark of Apple Inc., registered in the U.S. and other countries.

3xLOGIC, VIGIL and AZTECH are trademarks of 3xLOGIC, Inc.

Other trademarks and trade names may be used in this document to refer to either the entities claiming the marks and names or their products. 3xLOGIC Inc. disclaim any proprietary interest in trademarks and trade names other than their own.

Table of Contents

1 Introduction	1
2 Recommended System Requirements	2
3 Features	3
4 VIGIL Client Lite - Quick Start	4
4.1 Adding a VIGIL Server	4
4.2 Viewing Live Video	5
4.3 Searching and Reviewing Playback	6
4.4 Exporting Playback	7
5 Main Screen	8
5.1 Top Menu Bar	9
5.1.1 Preferences	9
5.1.2 About Window	10
5.2 Icon Toolbar	11
5.3 Sidebar and Sites Tab	12
5.3.1 Sidebar	12
5.3.2 Sites Tab	12
Camera Treeview	13
V-POS Treeview	13
Searching POS / ATM Data	13
Manual Query	14
Search by Transaction	15
POS/ATM Search Report	15
6 Servers Window	17
6.1 Add or Edit a Server	18
6.2 Add or Edit a VCM Server	19
7 Live Viewer	20
7.1 Live Viewer Controls	20

7.2 Live Viewer Windows21

 7.2.1 Live Viewer Edge Controls21

 7.2.2 Live - PTZ Controls22

8 Searching and Playback24

8.1 Searching Video24

8.2 Video Playback25

 8.2.1 Playback Controls25

 8.2.2 Playback Window Edge Controls26

 8.2.3 SmartSearch27

 8.2.4 Playback Digital PTZ Controls28

 8.2.5 V-POS Playback28

9 Exporting Video29

10 OSD Settings30

11 DV Player31

 11.1 Top Menu Bar32

 11.2 POS Receipt View and POS Search33

 11.3 Marking and Exporting Footage34

12 Contact Information35

1 Introduction

Recently released for macOS®, VIGIL Client Lite gives you unrivalled access to live and recorded video from any of your networked VIGIL Servers. Advanced playback and intelligent SmartSearch functionality lets you identify and review events of interest quickly and easily. The result is more accurate and efficient investigation of incidents with easy export of evidence material.

A unique combination of control, efficiency, and adaptability offering investigators unparalleled accessibility and manageability to their video network. The result is faster response times, reduced investigator times, and increased access and effectiveness of your video surveillance investments.

VIGIL Client Lite for Mac supports many of the features of the 3xLOGIC PC-based VIGIL Client, including:

- View live streams for up to 36 cameras across multiple VIGIL servers
- Use VIGIL Connect or Direct IP to connect to multiple VIGIL servers or standalone cameras
- Pan, Tilt and Zoom support for hardwired PTZ and IP-PTZ cameras (camera control type must be configured for PTZ in VIGIL Server)
- Digital Pan, Tilt, and Zoom support through the Live View window
- Instant playback to quickly view the last 5 minutes of video
- Search playback based on date and time
- Export .JPG and BMP snapshots.
- Video Exports in .mp4 format or 3xLOGIC's Authentic .mjp format which can be used with the new VIGIL DV Player for MAC to authenticate video or mark and export footage sub-ranges.
- SmartSearch support
- V-POS Support - Search for POS / ATM data from applicable Servers and instantly view playback related to POS transactions.
- On-Screen Display (OSD) for POS data.
- VIGIL Central Management (VCM) Support – VCM users can easily load managed VIGIL Server lists.

This user guide is current up to VIGIL Client Lite v1.5.0

Disclaimer: *This application has been optimized for use with macOS X (v10.11 El Capitan or newer). 3xLOGIC does not actively support other operating systems. Installing this application on operating systems other than those mentioned above may have undesirable consequences.

2 Recommended System Requirements

Component	System Requirements
Operating System	macOS X (v10.11- El Capitan or newer)*
CPU	Intel Core i5 64-bit processor
RAM	8GB or more
GPU / VRAM	1GB or more
Free Disk Space	140.7MB of free disk space required for installation.*
Connectivity	A working network or internet connection.*

*Required

3 Features

Feature	Details
Live Viewer	View many video feeds at once; see the site name, camera name and local time / date for each live video feed; with the client / server, view feeds for multiple sites at once.
Search	Retrieve a list of stored footage for specified cameras from a start date / time to an end date / time.
SmartSearch	Quickly find the footage you need by marking an area within a camera's field-of-view and searching. VIGIL will pull footage containing motion in the marked area, eliminating the need for lengthy footage review.
Quick Search	Retrieve a list of all footage for the past 1 – 8 hours.
Scroll-bar Playback	Use a scroll-bar to locate footage by dragging to a desired location, or skim ahead or back 1 or 10 frames per click.
Current Frame	See the frame number, frame count, frame size (in KB) and frame time / date for the currently displayed frame.
Save / Export Footage	Save video footage in mp4 format.
Save Still Frame	Save the currently displayed frame in png format.
Full Screen	View footage or pictures at their full resolution.
VISIX V-Series All-in-One Camera Integration	Add an All-in-One camera to VIGIL Client as a video source and access it using the same functionality as a standard VIGIL Server.
VCM Integration	Add a VCM as a video source to VIGIL Client to access its list of VIGIL Servers and their cameras. Quickly assemble enterprise-level lists of sites and cameras with minimal configuration needed.
PTZ Control	VIGIL Client Lite offers full control of hardwired PTZ Cameras using a simplistic click-and-drag system in the Live Viewer (camera must be configured as PTZ in VIGIL Server). For non-PTZ cameras, users can pan and zoom in the live viewer using VIGIL Client Lite's digital PTZ support.
V-POS Support	Search for POS / ATM data from applicable Servers and instantly view playback related to POS transactions. On-Screen Display (OSD) for POS data is also supported.
DV Player for Mac Integration	Client Lite playback exports are fully compatible with VIGIL DV Player for MAC which can be used to view and authenticate .mjp video or mark and export footage sub-ranges.

4 VIGIL Client Lite - Quick Start

In this section, instructions are provided for performing the most common tasks associated with VIGIL Client Lite.

4.1 Adding a VIGIL Server

To add a VIGIL Server to VIGIL Client Lite:

1. Launch the VIGIL Client Lite software.

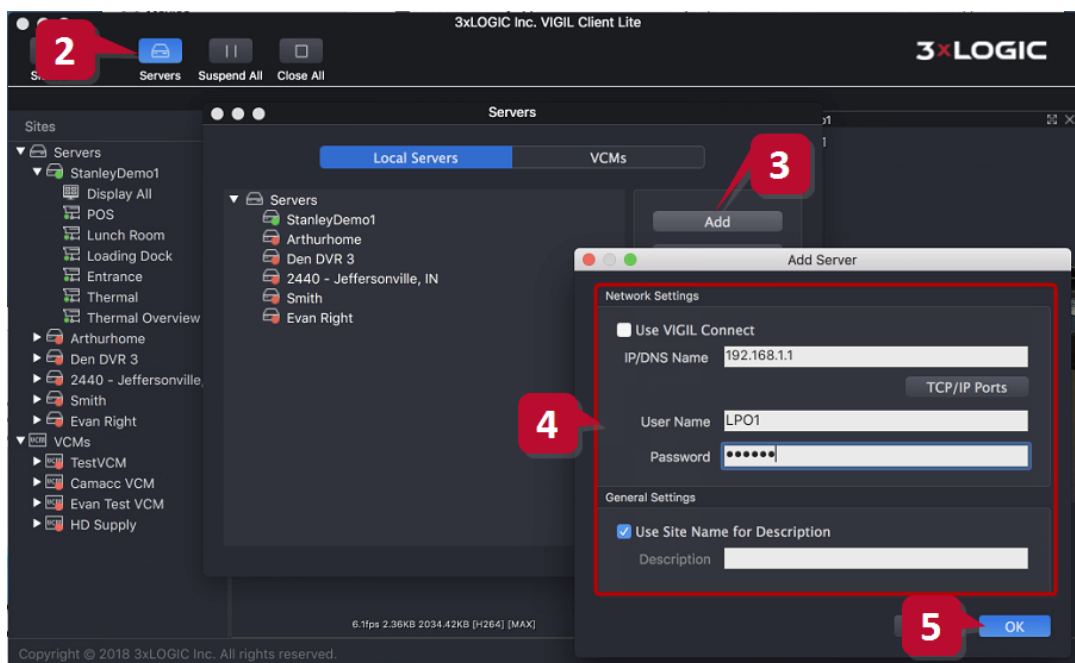


Figure 4-1: Adding a VIGIL Server

2. Click the **Servers** button in the icon menu toolbar.
3. On the *Local Servers* tab, click the **Add** button.
4. Enter in the connection and login information for the VIGIL Server.
5. Click **OK** to save the new settings. Close all remaining settings windows.

The VIGIL Server should now be visible under the sidebar Sites tab.

4.2 Viewing Live Video

To view a live video stream from a camera:

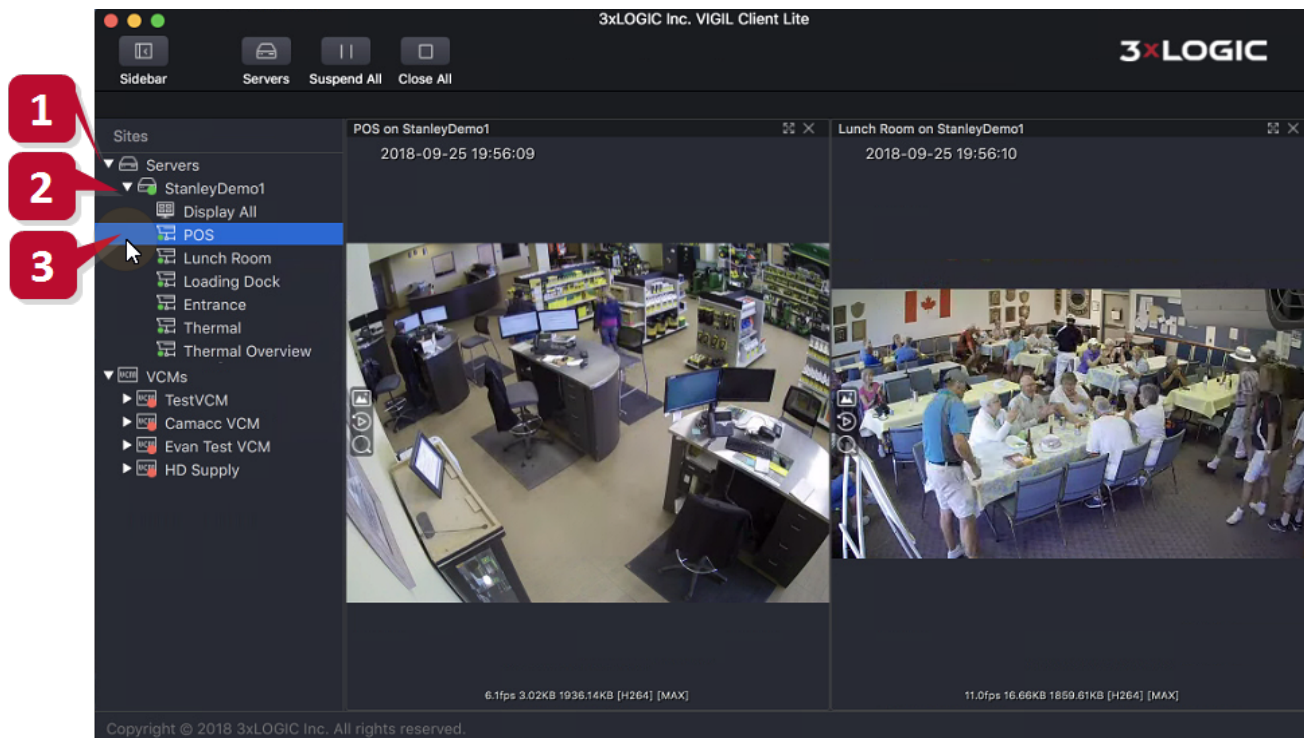


Figure 4-2:Opening a Camera in the Live Viewer

1. Expand the **Servers** treeview in the sidebar *Sites* tab.
2. Locate the camera's host VIGIL Server in the sidebar *Sites* tab (*StanleyDemo1* in the above example) and double-click it to expand its camera treeview.
3. Double-click the desired camera.

The camera stream should now be displayed in the live viewer. Repeat the above process for all desired cameras for up to a maximum of 32 cameras.

4.3 Searching and Reviewing Playback

To perform a playback search:

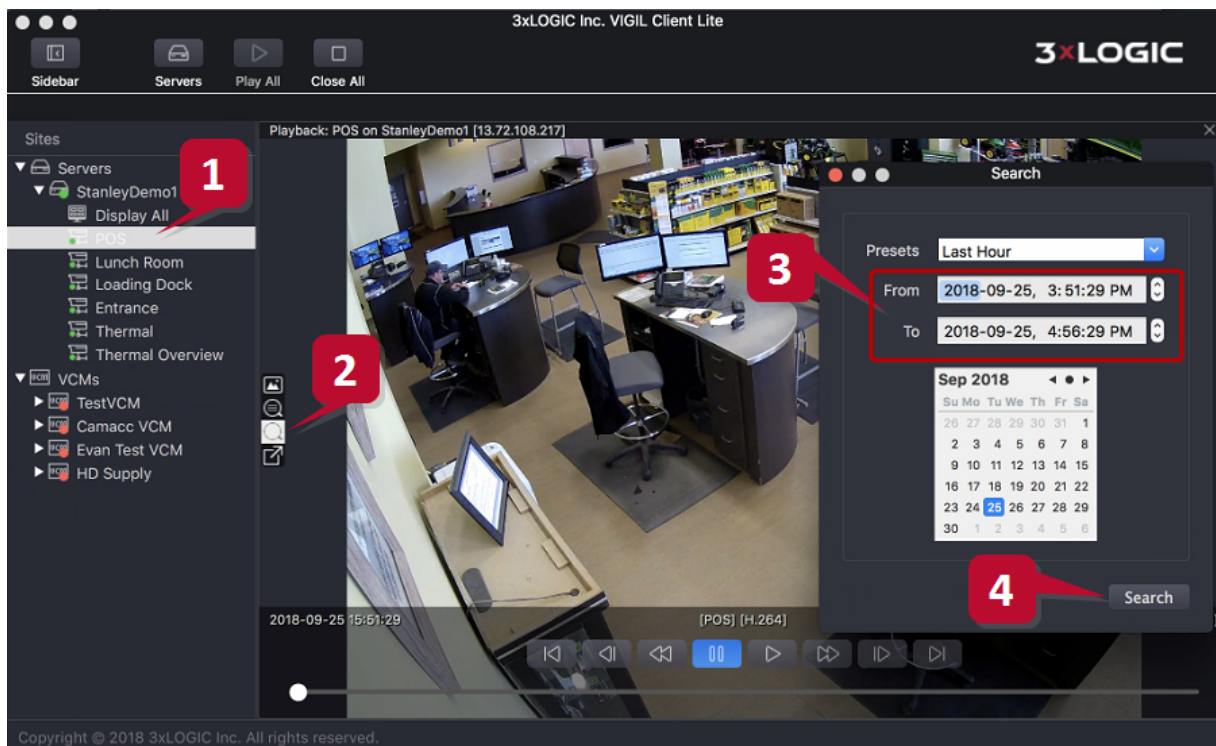


Figure 4-3: Performing a Search

1. Open the desired camera in the Live Viewer.
2. Click the **Search** button (located in the edge controls menu).
3. When the *Search* form deploys, enter in the desired search time frame parameters.
4. Click **Search**.

If footage exists that matches the search parameters, the playback will open in the viewer automatically and begin playing.

Review playback using the standard playback controls. If required, use the SmartSearch feature to quickly narrow down larger clips. See "SmartSearch" on page 27 for more information.

4.4 Exporting Playback

To export a playback clip:

- 1. Perform a playback search to locate the desired playback footage.

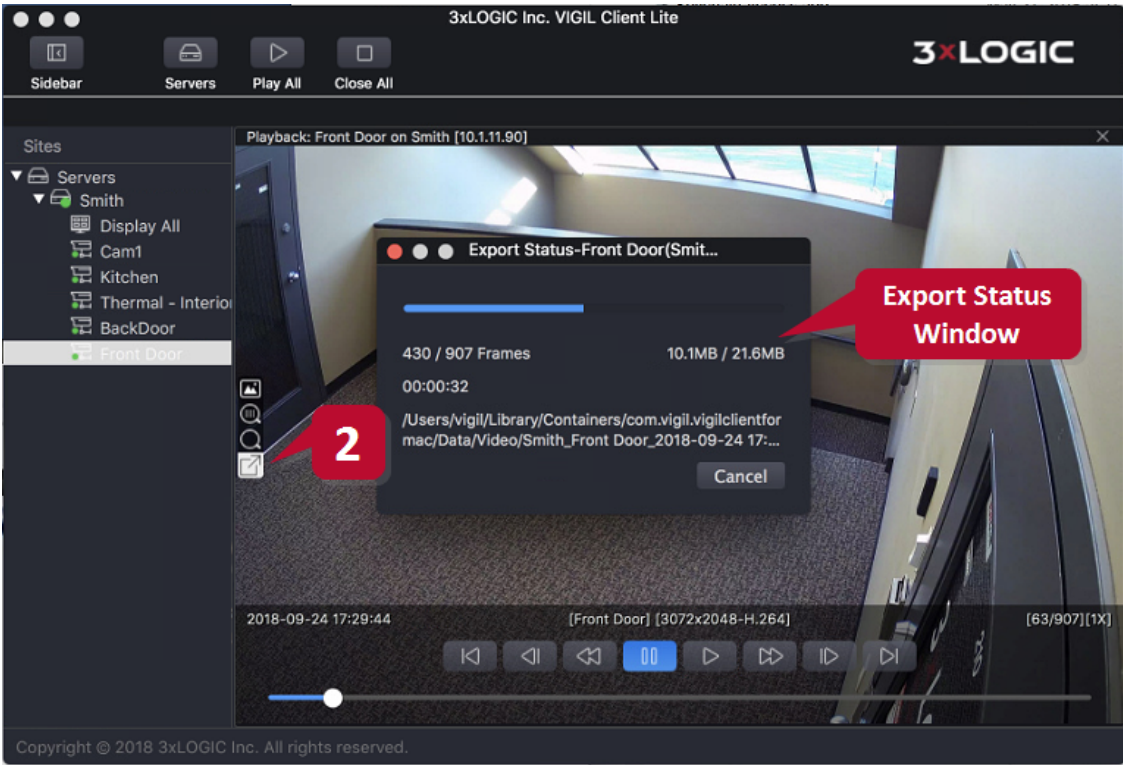



Figure 4-4:Exporting a Playback Clip

- 2. With the desired playback open in the playback viewer, click the **Export**  button.



Note: The entirety of the playback clip will be exported. If only a small portion of the clip is required, use the *Search* tool or the SmartSearch function to narrow down the footage length before exporting. This practice can greatly reduce export times.

The playback footage will now be exported as an .mp4 to the system's VIGIL video folder. Export progress will be displayed in the *Export Status* window.

When the export has finished, click **Open Folder** to open the video folder and review the exported playback file.

5 Main Screen

Below is the main interface that is displayed when VIGIL Client Lite has deployed.

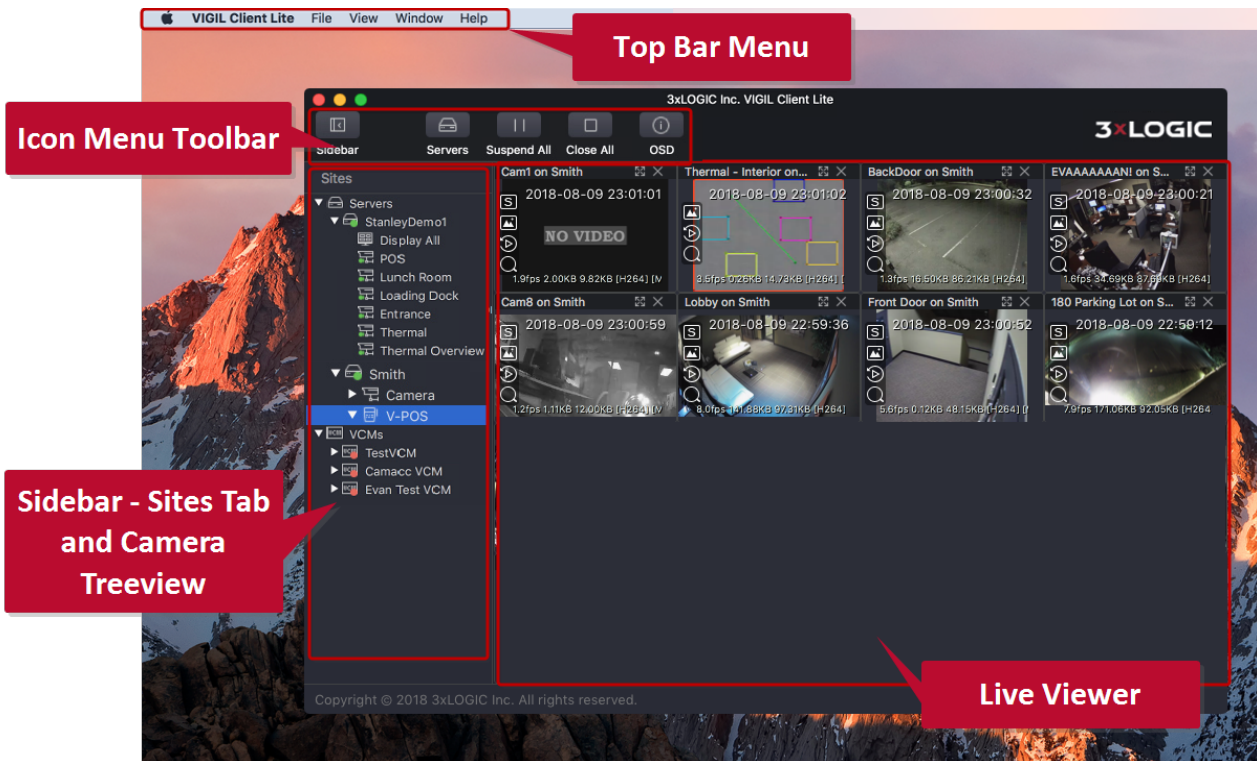


Figure 5-1: VIGIL Client Main Screen

The different components that make up the VIGIL Client Lite main interface are described in the proceeding sections of this guide.

5.1 Top Menu Bar

Each menu with its available tools / options are listed and described below:

Menu	Description
VIGIL Client Lite	<ul style="list-style-type: none"> ■ About VIGIL Client - Opens the About window. See "About Window" on the facing page for more information. ■ Preferences... - Opens the Preferences window. See "Preferences" below for more information. ■ Hide VIGIL Client - Hide VIGIL Client from the desktop. ■ Hide Others - Hide other windows currently visible on the desktop. ■ Show All - Deploy all active utilities on the desktop. ■ Quit VIGIL Client - Quit the VIGIL Client utility.
File	<ul style="list-style-type: none"> ■ Open Picture Folder - Open the still shot export folder. ■ Open Video Folder - Open the video export folder.
View	<ul style="list-style-type: none"> ■ Hide Toolbar - Hide the Icon Menu Toolbar. ■ Hide Side Bar - Hide the Side Bar. ■ Enter Full Screen - Enter full-screen mode.
Window	<ul style="list-style-type: none"> ■ Minimize - Minimize the VIGIL Client window. ■ Zoom - Zoom into the VIGIL Client interface. ■ Show Previous / Next Tab - Navigate to the previous / next tab. ■ Move Tab to New Window - Move the current tab to a new window. ■ Merge all Windows - Merge all tabs into a single window. ■ Show Tab Bar - Show the Tab Bar. ■ Bring All to Front - Bring all tabs to the front.
Help	<ul style="list-style-type: none"> ■ Search - Search the software (Top Menu Bar items) and Mac help knowledge base. ■ User Guide - Launches the VIGIL Client Lite user guide. ■ About - Launches the About window. See "About Window" on the facing page for more information.

5.1.1 Preferences

The *Preferences* window can be launched from the VIGIL Client top menu.

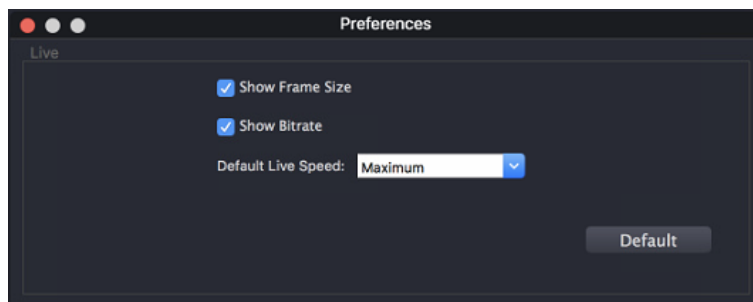


Figure 5-2: VIGIL Client Lite - Preferences

From the Preferences window, a user can set Live view preferences. All camera frames will be closed when adjusting preferences. The following preference settings are available:

Preference Settings	Description
Show Frame Size	Disable this option to hide frame size (measured in KB) info from the bottom info bar of camera streams. This option is enabled by default.
Show Bitrate	Disable this option to hide Bitrate (measured in KB) info from the bottom info bar of camera streams. This option is enabled by default.
Default Live Speed	Set the default live video speed. Available speeds include. Higher speeds will result in smoother video but lower overall system performance: <ul style="list-style-type: none"> ■ Slow (Keyframe Only) ■ Medium (5fps) ■ Fast (10fps) ■ Turbo (20fps) ■ Maximum

5.1.2 About Window

The *About* window features basic software information including software version and legal / copyright information.

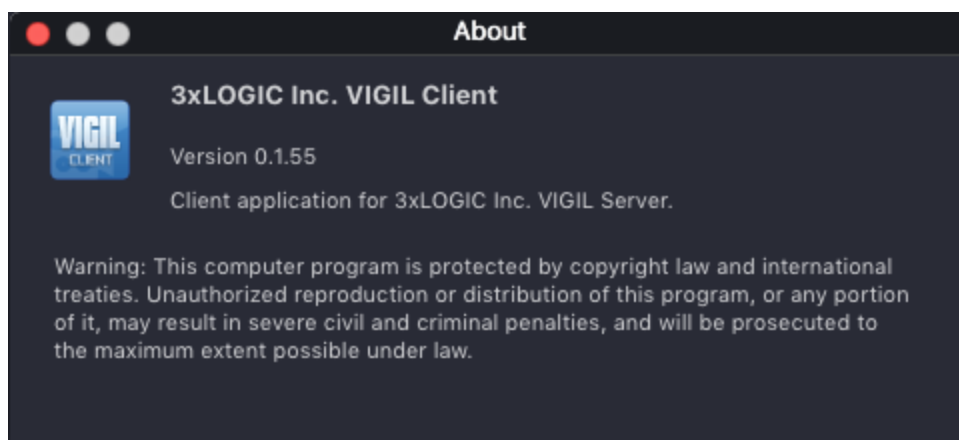






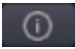


Figure 5-3: VIGIL Client Lite - About Window

5.2 Icon Toolbar

This table is a quick listing of the main toolbar buttons and their usage. Detail of each corresponding window is outlined in later sections.

Icon	Description
<div></div> <div>Close / Open Sidebar</div>	Close or Open the Sidebar
<div></div> <div>Servers</div>	Open the Servers window.
<div></div> <div>Suspend / Play All</div>	Suspend or Play all Live Streams
<div></div> <div>Close All</div>	Close all Live Streams. All Live streams will be removed from the Live Viewer.
<div></div> <div>OSD Settings</div>	Opens the OSD settings form.

5.3 Sidebar and Sites Tab

5.3.1 Sidebar

The Sidebar contains the VIGIL Server *Sites* tab. The Sites tab features a treeview list of configured VIGIL Servers and their cameras.

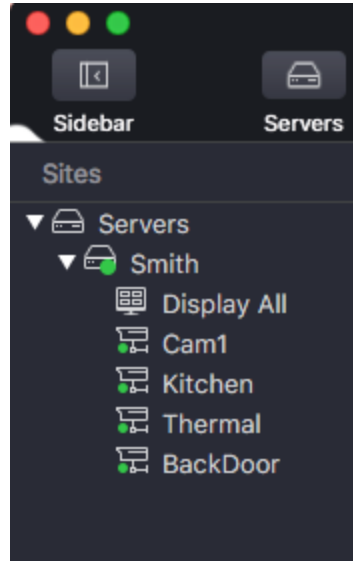



Figure 5-4: VIGIL Client Lite - Sidebar

Click the **Sidebar**  button in the icon menu toolbar to hide or show the sidebar.

5.3.2 Sites Tab

The *Sites* tab is the main component of the sidebar. This tab lists any VIGIL Servers (including All-in-One cameras) and VCMs that have been added to VIGIL Client Lite. Each server can be further expanded to reveal a camera tree view. VCMs can be expanded to reveal a list of VIGIL Server sites which can be further expanded to reveal their cameras.

Click the context arrow next to *Servers* (or double-click *Servers*) to reveal available video sources.

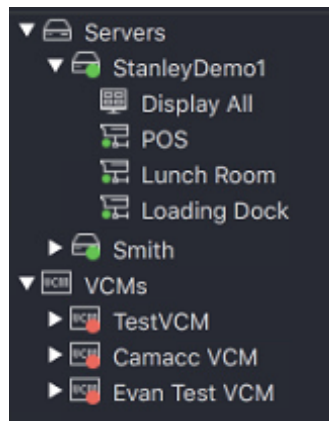


Figure 5-5: Sites Tab with Camera Treeview

The following tables describes actions a user can take on the Sites Tab.

Double Click	Double-Click on a VIGIL Server or a VCM to expand its camera treeview.
Right Click	Right-Click on a VIGIL Server or a VCM to reveal the following options: <ul style="list-style-type: none">■ Connect - Connect to the site with the configured username and password.■ Connect As - Enter a username and password to connect to the site.■ Refresh - Reload the Information from the Site.■ Disconnect - Disconnect from the Site.

Camera Treeview

When a VIGIL Server is expanded, a treeview featuring its camera will expand.

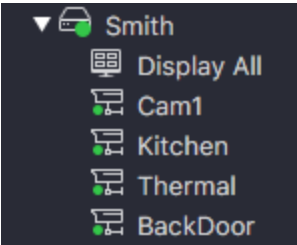


Figure 5-6: Camera Treeview

Display All	Double Click <i>Display All</i> to open all Cameras on this site in Live View Windows.
Double Click	Double Click on a Camera to open it in a Live View Window.
Right Click	Right Click on a Camera to reveal the following options: <ul style="list-style-type: none">■ Instant Replay - playback the last five minutes of footage.■ Search - Open a playback search query for this camera.

V-POS Treeview

The V-POS Treeview will be available when V-POS is installed on the VIGIL Server. From the V-POS Treeview, a user can select the *POS/ATM Search* option which will allow the user to search through a VIGIL Server's stored point-of-sale data.

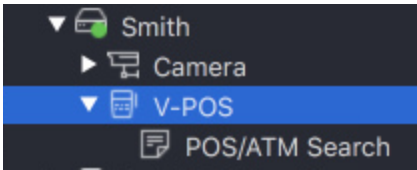


Figure 5-7: Sites Tab - T-POS Treeview

Searching POS / ATM Data

After double-clicking POS/ATM Search, the POS/ATM Search window will deploy.

Figure 5-8: VIGIL Client Lite - V-POS - POS/ATM Search

In VIGIL Client Lite, VPOS Search Reports can be created using 2 different methods; a *Manual Query* or *Searching for Transaction Receipt*. The proceeding portions of this section will cover each type of query, however, common controls shared between all both VPOS search report types are described below:

Field	Description
From / To	Specify the start date / time and end date / time for the Manual Report. If there is no POS/ATM Data during the specified time frame you will receive a <i>No Data</i> warning which states there was no data that matched your criteria available. Please note that searches spanning long periods of time may generate slowly.
Quick Search	Select a pre-defined time interval from the drop down menu.

Manual Query

On the Manual Query tab, use the *Search for Line Items* fields to find specific *POS/ATM Data* within the date and time indicated in the *Search Criteria* section. When searching for line items, normal search criteria are also included (i.e. *From* and *To* date / times/ Quick Search settings).

Field	Description
OR / AND	Logical operators that will assist in searching with multiple criteria. By default, this is the <i>OR</i> operator, which will match results in any of the used POS/ATM Data criteria fields. Alternatively, the <i>AND</i> operator will match results in all of the used POS/ATM Data criteria fields.
Item	Type in text to search by <i>Item</i> . Use the drop-down menu to select a recently searched item, remembers last 10 searched for items.
Amount	Type in text to search by an amount (in dollars and cents). Only items matching the listed amount will be returned. Alternatively, fill both available fields to create a price range. Transactions that fall within the configured range will be returned.
Code	Type in text to search by <i>Code</i> .

Quantity	Type in a number to search by <i>Quantity</i> .
Cashier	Type in text to search by cashier number or name.
Register	Type in a number to search by <i>Register Number</i> . Click the <i>Grotto Register</i> button to retrieve a list of Camera to Register mappings.
Terminal	Type in a number to search by <i>Terminal</i> .

Search by Transaction

This type of search looks for a unique line item or receipt number and disregards the other criteria.

Receipt Number	Type in text that will match results in <i>Receipt #</i> column. The search results will include 10 seconds before the start of the receipt and 10 seconds after the end of the receipt.
IDX	Type in text that will match results in <i>IDX</i> column. If the <i>IDX</i> contains a receipt number, the POS/ATM data returned will be that receipt number and all <i>IDX</i> values corresponding to it within one hour. If there is no receipt number for the searched <i>IDX</i> value, the returned results will be based on the timestamp of that <i>IDX</i> . The search results will be +/- 10 seconds from the timestamp of the <i>IDX</i> .

POS/ATM Search Report

After completing a POS/ATM data search, the search results will be displayed in the form of a POS/ATM report.



Figure 5-9:POS/ATM Search Report

The report is presented in table with each column corresponding to the data fields from the POS/ATM data. Up to fifty results are presented per page of the report. Depending on the number of results returned by the query, several pages may exist. Pages can be navigated using the controls in the bottom left. Available report controls are described below:

Column	Description
Playback	Click the Playback icon of a specific result to begin viewing footage surrounding the selected VPOS transaction. See "V-POS Playback" on page 28 for more information.
Thumbnails	Opens the related thumbnail in a small preview window. A timestamp is also provided in the lower right-hand corner of the window.

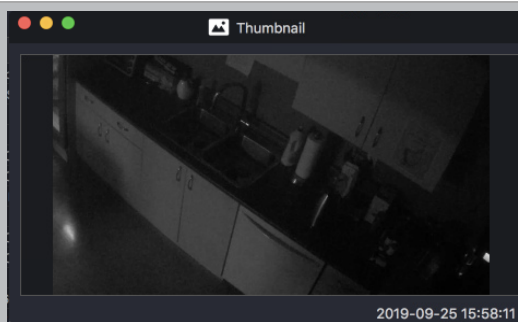


Figure 5-10:VPOS Report - Thumbnail Window

Receipt #	The receipt number of an entire POS transaction. All items processed in a single transaction will share the same receipt number. Click on a Receipt # hyperlink to filter the report to feature all items with that receipt number.
IDX	The VPOS database index number of the item. Items processed in a transaction together will have separate IDX numbers.
Email Page	Click this button to Email the current report page to a list of recipients. An SMTP Server must be configured in the VIGIL Server's <i>Email Overview Settings</i> tab.
Advanced Export	Click this button to export the entire report, organized by receipt, as a .txt.
Export Report	Click this button to export the entire report as a .txt .
Print Page	Click this button to print the current report page. The printed page will appear as displayed in the Report Results window.
Close	Click this button to close the report.

6 Servers Window

The *Servers* window can be opened using the *Servers* button in the Icon Menu Toolbar. Both a *Local Server* or a *VCM* server can be added to VIGIL Client from the Servers window.

- A *Local Server* in this context is a Windows PC configured as a VIGIL Server or a standalone 3xLOGIC V-Series All-in-One Server Camera. See "Add or Edit a Server" on the next page for more information on adding a local server.
- A *VCM (VIGIL Central Management)* server is a separate piece of VIGIL software that monitor multiple Server sites simultaneously. A VCM can be added to VIGIL Client, granting access to all of a VCM Server's Sites and cameras. See "Add or Edit a VCM Server" on page 19 for information on adding a VCM.

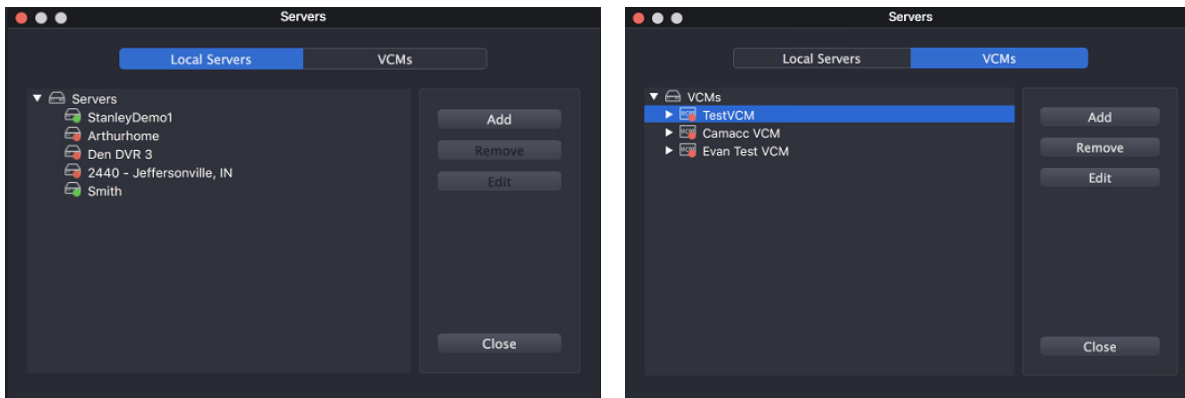


Figure 6-1:Servers Window - Local Servers (Left) and VCMs (Right)

Both the *Local Servers* tab and *VCMs* tab allow the user to *Add*, *Remove* or *Edit* a video source.

Add	Opens the <i>Server Settings</i> or <i>VCM Settings</i> window where you can add a server / VCM.
Remove	Opens a prompt confirming if you wish to remove the currently selected server / VCM from the list.
Edit	Opens the <i>Server Settings</i> or <i>VCM Settings</i> window for the currently selected server allowing you to change the stored settings.

Once added, a VIGIL Server's cameras can be opened in the Live Viewer and can be searched for playback footage.

6.1 Add or Edit a Server

From the *Servers - Local Servers* tab, click the *Add* or *Edit* buttons from the *Servers* window to open the *Add / Edit Server* form. A Server must be selected to use the *Edit* function.

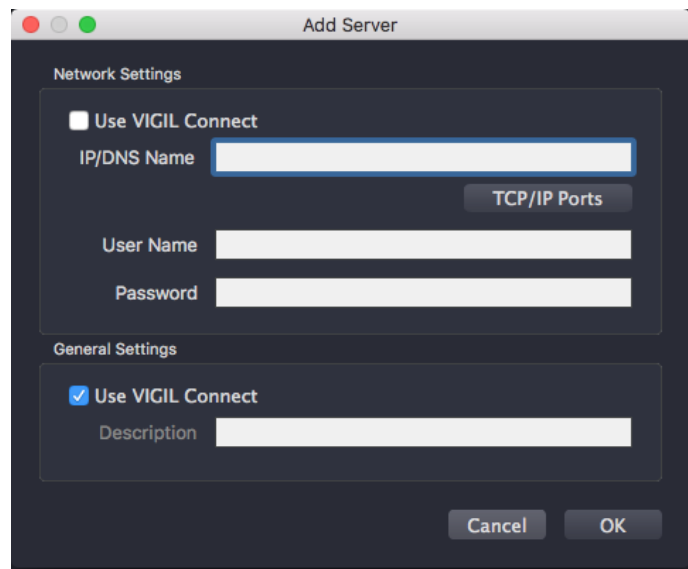


Figure 6-2: Servers - Add / Edit VIGIL Server Form

The *Add / Edit VIGIL Server* form fields are described below in detail.

Network Settings	
Use VIGIL Connect	Enable this to use a VIGIL Connect alias or serial number instead of an IP address. VIGIL Connect aliases are case sensitive so be sure it is an exact match of the alias configured on the desired server.
IP / DNS Name	The IP address or DNS name of the server. If Use VIGIL Connect is enabled, this field will be replaced with the <i>Serial No. / Alias</i> field.
Serial No / Alias	When Use VIGIL Connect is enabled, this field will be visible. Enter the VIGIL Server's VIGIL Connect alias or serial number.
TCP/IP Ports	Open a window to change the default TCP/IP port settings if they have been altered on the server. If <i>Use VIGIL Connect</i> is toggled on, this option will not be visible.
Test VIGIL Connect	Test the VIGIL Connect alias to confirm a connection can be established with the device.
User Name / Password	The user name and password that VIGIL Client will use to log in to the server. If these are left blank, a prompt will be opened during connection for the user name and password to be input manually.
Network Settings	
Use VIGIL Connect	Enable this option to use the Server's VIGIL Connect Alias as its description. .
Description	Enter a site description to identify the in Client or check-off <i>Use Site Name for Description</i> to name configured on the VIGIL Server itself as its description.

6.2 Add or Edit a VCM Server

From the *Servers - VCMs* tab, click the *Add* or *Edit* buttons from the *Servers* window to open the *Add / Edit Server* form. A VCM must be selected to use the *Edit* function.

Figure 6-3:Servers - Add VCM

The *Add / Edit VCM* form fields are described below in detail.

VCM Settings	
VCM Name	The name of the VCM. This will be used to describe the VCM in VIGIL Client.
IP Address	The IP Address of the VCM Server.
Port	The Data Port of the VCM Server.
VCM Username / Password	<p>The VCM Username and Password. Access to sites and cameras belonging to this VCM will be dependent on the access permissions of the entered user.</p> <p>Example: A VCM Server hosts 100 VIGIL Servers. The VCM User used to log into the VCM via VIGIL Client only has permissions to access 50 of those Servers. Only the 50 Server the user can access will appear in the <i>VIGIL Client > VCM Sites</i> tab.</p>
Always Prompt for Log On	Enable this option to always prompt for user login when attempting to connect to the VCM.
Test Connection	Click this button to test the connection info you have entered for the VCM.

7 Live Viewer

Live Viewer windows each display a single camera feed from a connected VIGIL Server.

Double-click a camera in the camera treeview to add it to the live viewer.

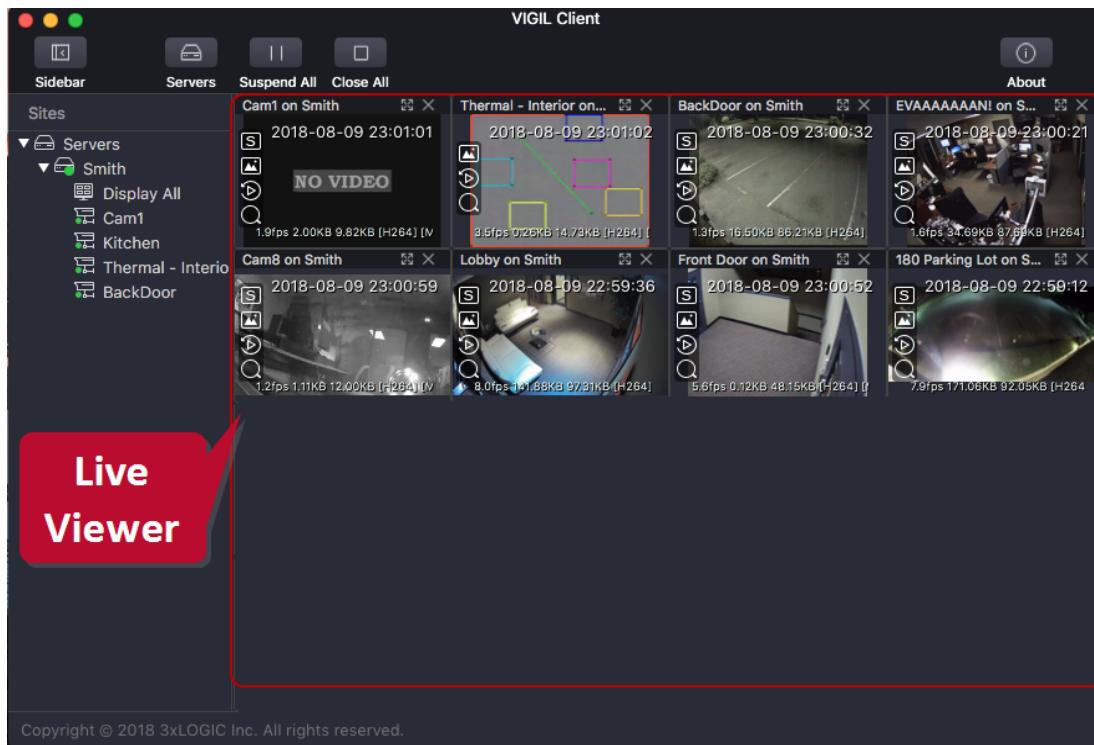




Figure 7-1: VIGIL Client Lite - Live Viewer

7.1 Live Viewer Controls

Standard Live Viewer controls can be accessed from the Icon Toolbar at the top of the interface.

Icon	Description
 Suspend / Play All	Suspend or Play all Live Streams
 Close All	Close all Live Streams. All Live streams will be removed from the Live Viewer.

7.2 Live Viewer Windows

Camera feeds are displayed in windows within the live viewer.

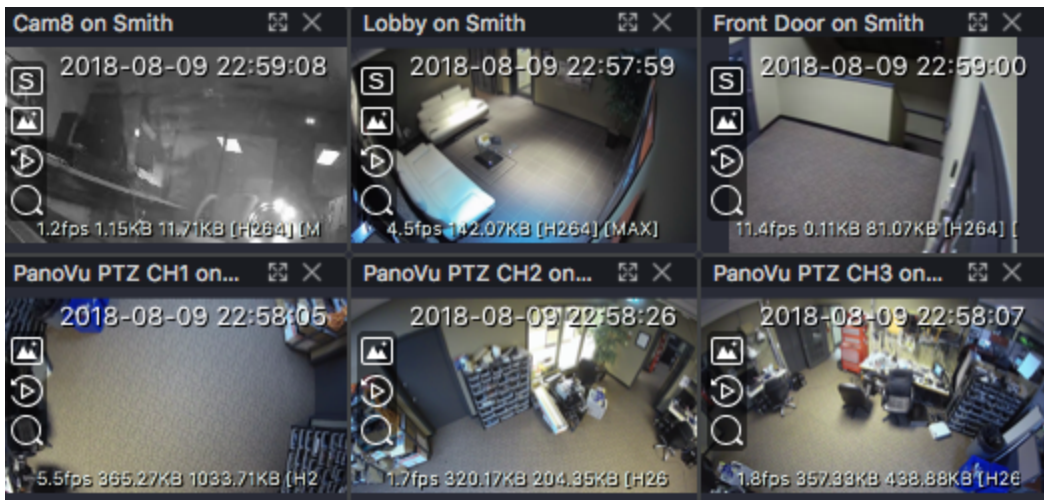


Figure 7-2: VIGIL Client Lite - Live Viewer Windows

Each window has a number of features and displays information regarding the camera stream:

- The top bar of each frame will list the camera name and it's host VIGIL Server name (i.e *Cam3 on Smith*).
- The full screen and exit functions can also be utilized from the top bar by clicking their respective button.
- The bottom of the window will list frame rate, bitrate, and codec. (i.e. *1.7fps 334.27 KN 281.78KB [h.265]*).
- The left edge of the window will feature the edge control menu. Several tools can be accessed from the edge controls. See "Live Viewer Edge Controls" below for more information.

7.2.1 Live Viewer Edge Controls






Live viewer windows each have a set of controls available on the left edge of their frame. Some controls will only appear for cameras when certain functions are enabled.



Figure 7-3: Live Viewer Edge Controls

Edge controls are detailed below:

Edge Control	Description
--------------	-------------

 Sub Stream / Mainstream	Switch the camera live stream between Substream and Mainstream.
 Save Stillshot	Save a stillshot of the current frame. A prompt will deploy when the still has been successfully saved.
 Instant Replay	Open the last 5 minutes of playback footage from the camera. The footage will launch in the Playback Viewer. See "Video Playback" on page 25 for more information on playback footage.
 Playback Search	Launch the playback Search window. Using the Search interface, a user can find and review playback footage from the selected camera. See "Searching Video" on page 24 for more information for playback Search.
 Enable / Disable OSD	Enable or disable on-screen display of POS/ATM data. OSD settings can be configured from the OSD Settings window. See "OSD Settings" on page 30 for more information.

Live viewer windows each have a set of controls available on the left edge of their frame.



Note: Some edge controls may be unavailable for certain camera configurations.

7.2.2 Live - PTZ Controls

Pan/Tilt/Zoom (PTZ) cameras allow navigation to an area of interest and are controlled by the user from the Live Viewer window. There are three major types of Pan/Tilt/Zoom (PTZ) cameras that exist: digital PTZ cameras, IP PTZ cameras and hard-wired PTZ cameras:

Digital PTZ camera control allows users to zoom in on a fixed camera and move within the image without controlling the physical camera itself. Digital PTZ camera control is software-based and is automatically enabled for all cameras in the live viewer that are not assigned to any other type of camera control.

IP-PTZ cameras must be set up individually in the VIGIL Server settings and control the physical camera through a network connection to the VIGIL Server. Hard-wired PTZ cameras are also set up individually in the VIGIL Server settings and control the physical camera through a camera input on the VIGIL Server.



Note: PTZ cameras must be configured in VIGIL Server for successful PTZ control in VIGIL Client Lite.

PTZ Control, regardless of PTZ type, is performed using a simple click-and-drag method in the VIGIL Client Live Viewer. To utilize PTZ:

1. Open the desired camera in the live viewer.



Figure 7-4:VIGIL Client Lite - Issuing PTZ Commands

2. Click, hold and drag around the image to issue PTZ commands. A line will extend from the centre of the image that will depict the direction of PTZ movement. Use the mouse-wheel to zoom in and out.

For cameras with full PTZ functionality (hardwired or IP-PTZ), the camera should begin to pan, tilt and zoom toward the chosen direction. For cameras with digital PTZ, the user may zoom in and out of the live image. The user may also pan around the image when zoomed in.

8 Searching and Playback



Note: Searching and Playback are only available when connected to VIGIL Server v9.50.0000 or newer versions.

VIGIL Client offers a robust set of tools for searching and playing video footage. Both Search and Playback functionality can be accessed from a camera's Live Viewer Edge Controls.

8.1 Searching Video


The Search form can be launched by clicking the **Search**  button (located in the left edge control menu) on a camera's live view.

Figure 8-1: Playback Search

The available *Search* form fields are described below:

Field	Description
Presets	Select a preset search timeframe. Playback matching the selected preset timeframe will be returned. Available presets include: <ul style="list-style-type: none"> ■ Last Hour ■ 2 Hours ■ 3 Hours ■ 4 Hours ■ 5 Hours
From	Set the <i>From</i> parameter. The Search time frame will begin at the entered time.
To	Set the <i>To</i> parameter. The Search time frame will end at the entered time.
Calendar	Use the calendar to quickly select a day for the <i>From</i> and/or <i>To</i> parameter. The day will switch for either the <i>From</i> or <i>To</i> parameter, depending on which parameter was selected when the calendar date was chosen

After filling in the desired search parameters, click Search. If playback is available, the footage will launch in the playback viewer. If no footage is available, the user will receive a warning prompt.

8.2 Video Playback

After performing a search or opening an instant playback from a camera's live view, the resulting playback will launch in the playback viewer, ready for review.

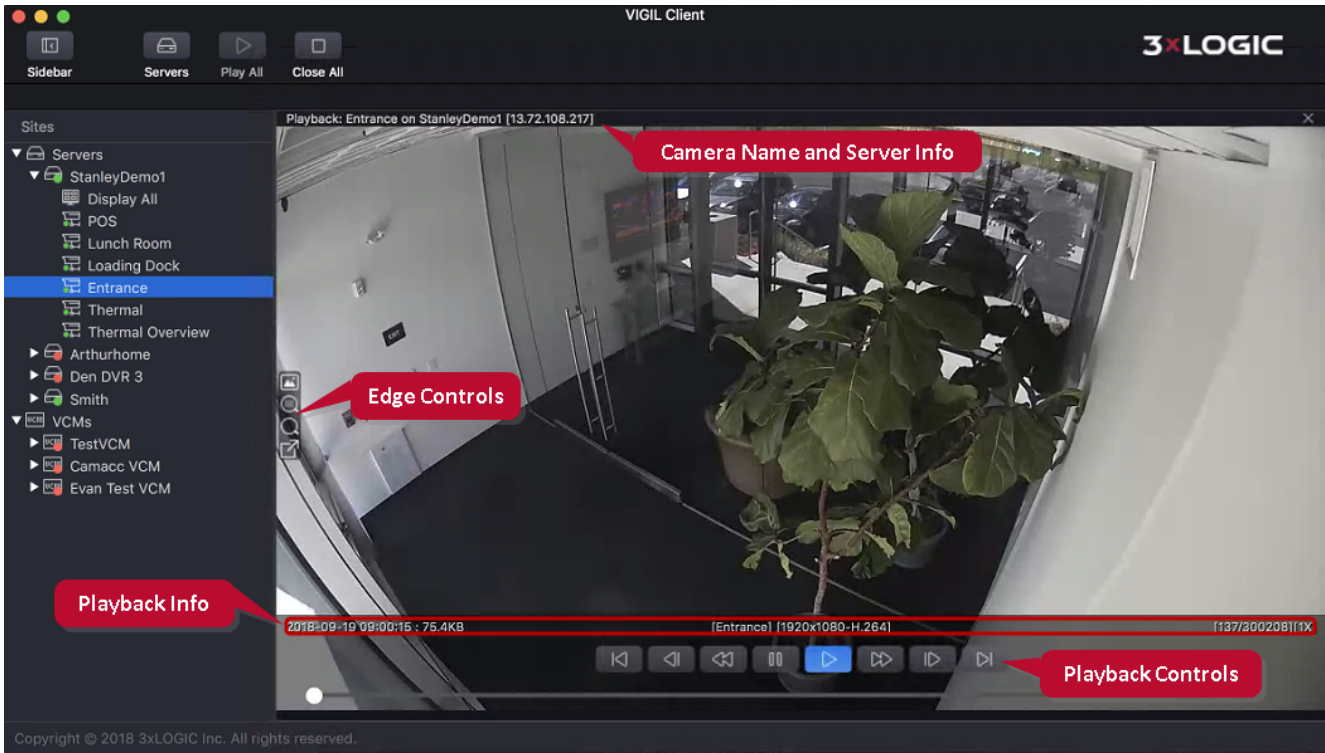









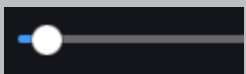
Figure 8-2: VIGIL Client Lite - Playback Viewer

- Across the top bar of the playback frame, an overlay will list the *Camera Name*, *VIGIL Server* name and IP information. .
- Playback info such as *Date*, *Camera Name*, *Resolution*, *Codec* and *Frame Count* will be overlaid near the bottom of the frame, above the playback controls.

8.2.1 Playback Controls

The Playback viewer features a standard set of playback controls. Each control is described below.

Playback Control	Description
	Plays the loaded playback footage.
	Pauses the active playback footage.
 	Plays back all footage backward or forward at maximum speed without skipping any frames.
 	Skips one 10th of the footage. While paused or stopped, click to play back frame by frame. The mouse scroll wheel can also be used to scrub footage in this manner by selecting the playback slide-bar.

	Skips to the very beginning or end of the video footage.
	Click-and-drag the slide-bar to move to a different point in the video clip.

To exit the playback viewer, click the X at the top-right of the playback frame.






8.2.2 Playback Window Edge Controls

The Playback viewer window features a set of controls available on the left edge of the frame.




Figure 8-3: Playback Edge Controls

Edge controls are detailed below:

Edge Control	Description
 Save Stillshot	Save a stillshot of the current frame. A prompt will deploy when the still has been successfully saved.
 Smart Search	Opens the <i>Smart Search</i> interface. Smart Search is a motion detection-based tool that can aid a user in quickly narrowing down footage to key points-of-interest. See "SmartSearch" on the next page for more information on Smart Search.
 Playback Search	Launch the playback Search window. Using the Search interface, a user can find and review playback footage from the active camera. See "Searching Video" on page 24 for more information on playback search.
 Export Footage	Export the current playback footage. See "Exporting Video" on page 29 for more information on playback exports.
 Enable / Disable OSD	Enable or disable on-screen display of POS/ATM data. OSD settings can be configured from the OSD Settings window. See "OSD Settings" on page 30 for more information.

8.2.3 SmartSearch

SmartSearch enables a user to quickly narrow down footage by marking an area within a camera's field-of-view and searching. VIGIL will return footage containing motion only in the marked area, narrowing down the footage and eliminating the need for lengthy footage review.

To launch the SmartSearch tool, click the  button (located within an open playback's edge control menu).

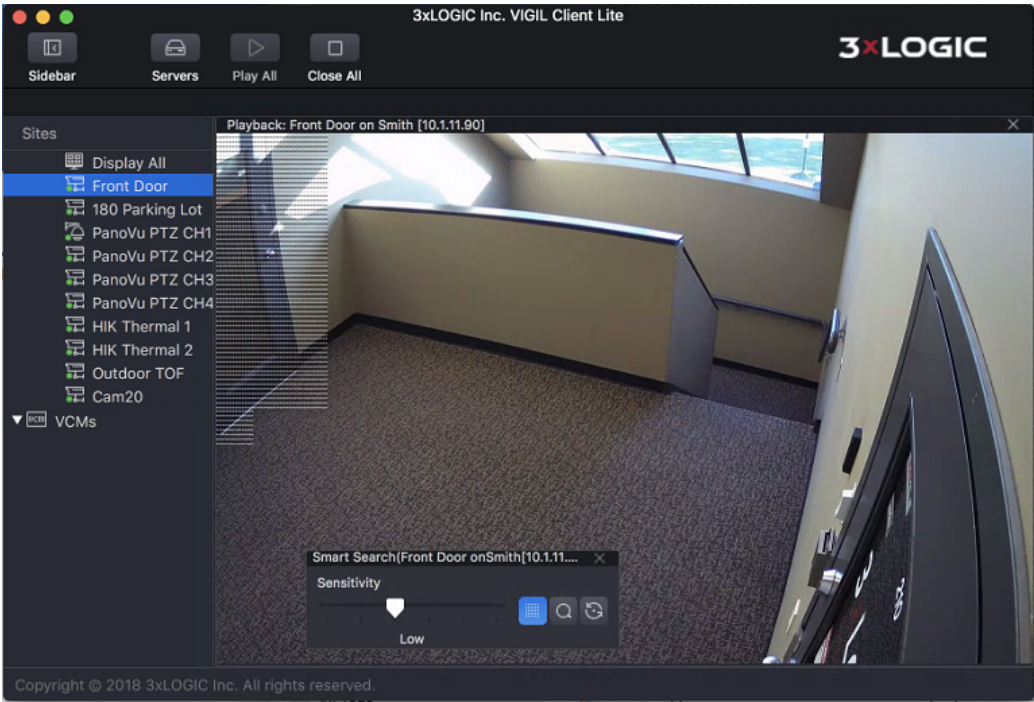



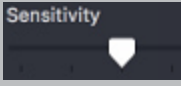


Figure 8-4:Smart Search

Tool	Description
 Show Mask	Show or hide the SmartSearch mask. When Show Mask is enabled, the bottom playback controls will auto-hide as to not obscure any portion of the footage. This feature is active by default.
 Search	Perform the search of the masked region.
 Refresh	Clear the current mask.
 Sensitivity	Use the slider bar to set the motion sensitivity threshold. The higher the sensitivity, the less motion that is required within a frame for it be included in the returned footage.

To perform a SmartSearch, you must first define or “mask” a motion detection region. To begin:

1. Click the **Show Mask** button and draw a mask on the playback image (when Show Mask is enabled, the bottom playback controls will auto-hide as to not obscure any portion of the footage).

- Click the **Search** button to perform the search. Once the search is complete, only video frames that contain motion in the masked region will be loaded for playback.

You may use the sensitivity controls to select higher or lower levels of motion sensitivity for the SmartSearch masked region.

8.2.4 Playback Digital PTZ Controls

Digital PTZ for playback video functions identically to Live mode. See "Live - PTZ Controls" on page 22 for more information.



Note: Only digital PTZ can be utilized in playback mode.

8.2.5 V-POS Playback

When V-POS Report is run and the playback icon is clicked one of the transactions listed in the report, the V-POS playback window will deploy with the related footage. Embedded POS data will be displayed in a data receipt view on the right-side of the interface.

The screenshot displays the V-POS Playback interface. On the left, a video feed shows a retail store interior with a cashier and a customer. Overlaid on the video is a POS receipt table. On the right, a separate POS data view is shown, which is a detailed receipt for a specific transaction. A red callout bubble labeled "POS Data" points to the right-hand receipt view.

Qty.	Item	Amount	Code
0	REGULAR GASOLINE/Volum...	\$30.00	4041
0	Subtotal/Tax:1.430	\$30.00	4065
0	Cash Tender	\$30.00	4003
0	Transaction Completed	\$0.00	4082
0	Transaction Started	\$0.00	4092
1	MACHINE LOTTO	\$18.00	4002
0	Subtotal/Tax:0.000	\$18.00	4065
0	Cash Tender	\$20.00	4003

Qty.	Item	Amc
0	Transaction Started	\$0.00
0	REGULAR GASOLINE/V...	\$30.00
0	Subtotal/Tax:1.430	\$30.00
0	Cash Tender	\$30.00
0	Transaction Completed	\$0.00
0	Transaction Started	\$0.00
1	MACHINE LOTTO	\$18.00
0	Subtotal/Tax:0.000	\$18.00
0	Cash Tender	\$20.00
0	Transaction Completed	\$0.00

Figure 8-5: V-POS Playback

All playback controls and edge controls function identically to the standard playback viewer. See "Playback Controls" on page 25 and See "Playback Window Edge Controls" on page 26

Double-click an entry in the POS receipt to be instantly taken to that transaction's corresponding portion of the footage. If data from multiple registers is embedded in the playback file, select the desired register from the available *Register* drop-down (located at the top of POS data view).


When Authentic MJP footage is exported from the V-POS playback viewer, POS data will be embedded into the file and can be viewed using VIGIL DV Player (for both Windows and Mac).

9 Exporting Video



Note: Exporting is only available when connected to VIGIL Server v9.50.0000 or newer versions.

In VIGIL Client Lite, a user can quickly save footage of interest using the VIGIL export feature. Footage is exported in .mp4 format to the system's VIGIL video folder. To perform an export:

1. When you have located and reviewed your desired playback footage, click the **Export**  button located on the playback edge control menu.
2. Select Export MP4 or Export MJP.
 - **MP4:** Standard mp4 format.
 - **MJP:** 3xLOGIC's authenticated MJPEG format . When used in conjunction with 3xLOGIC's VIGIL DV Player for Mac, authenticated .mjp video files will display a large red 'x' across the screen on any tampered frames. See "DV Player" on page 31 for more information on video authentication and DV Player.

After choosing your format type, the footage will now begin exporting to the system's video folder.



Note: The entirety of the playback clip will be exported. If only a small portion of the clip is required, use the *Search* tool to narrow down the footage length before exporting. This practice can greatly reduce export times.

Progress will be listed in the *Export Status* window which will deploy when the export commences.

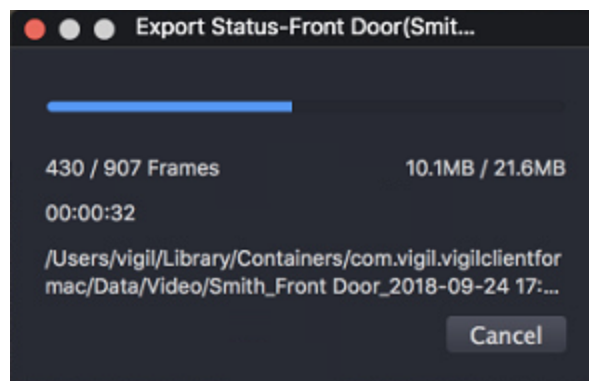


Figure 9-1:Export Status Window.

When the export has finished, the user will be prompted and will be given the option to either open the video export folder or close the export status window. 3xLOGIC recommends reviewing playback in 3xLOGIC's VIGIL DV Player for Mac. See "DV Player" on page 31 for more information.

10 OSD Settings

The *OSD Settings* window can be opened using the *Servers* button in the Icon Menu Toolbar.

Figure 10-1:OSD Settings

Field	Description
Dwell Time	The number of seconds a data record will remain on-screen.
Number of Lines	The maximum number of records to display at a time.
Font Color/Size/Bold	Change the font color/size/boldness.
Horizontal / Vertical Offset	The number of characters to offset the text from the left / top side.
Column Selection	Specify which columns to display on-screen.
Reset to Default	Click to reset the corresponding portion of the form's settings to default values.
OK	When you are finished configuring the OSD, click the <i>OK</i> button to apply your changes.

11 DV Player

VIGIL DV Player provides an easy and intuitive way to view 3xLOGIC's exclusive MJP video format, which offers increased quality with reduced file sizes over many commonly used formats.

VIGIL DV Player can be downloaded from the [MAC App Store](#).

In addition to all regular video viewing features the DV Player also support a side window display for embedded POS data, options for marking sections of video and exporting them as either MJP or MP4, and also the ability to authenticate the authenticity of an .mjp video to verify that no tampering or corruption has occurred.

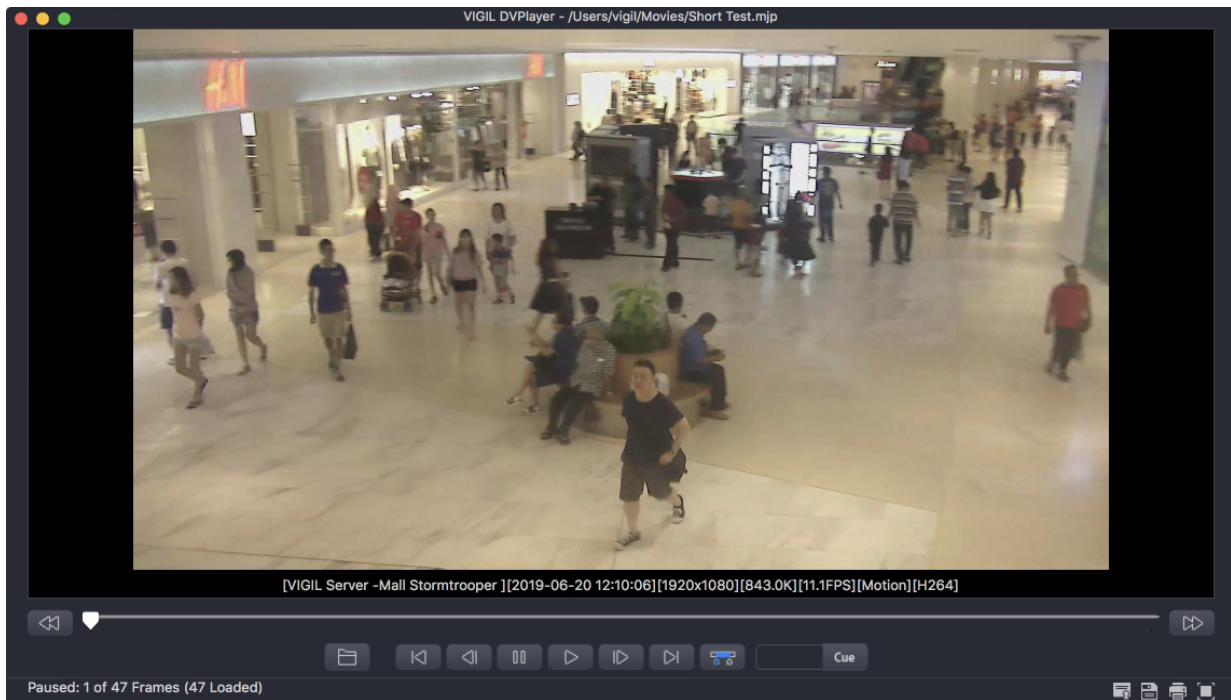
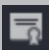








Figure 11-1:VIGIL DV Player

A number of controls have been provided to make navigation and advanced features more accessible:

	Click and hold down the <i>Fast Backward</i> or <i>Fast Forward</i> button to playback as quickly without skipping any frames
	Skips to the very beginning / end of the video footage.
	If clicked while playing the footage, skips one 10 th of the footage. While paused or stopped, click to playback frame by frame.
	<i>Pause / Play</i> the video footage.
	Click-and-drag the pointer on the slider bar to advance or rewind the video footage. The mouse scroll wheel can also be used to do this.
	During playback, if only a sub-range of the loaded footage is of interest, it can quickly be selected by using markers.

	Click to authenticate the video to ensure that it has not been tampered with. If the video has been tampered with, a red X and an error message will be displayed.  Note: The authentication feature on the DV Player will only detect errors for video frames that have been tampered with since the export. If the video was altered before the export, authentication errors will not be found.
	Save a still image in <i>BMP</i> or <i>JPG</i> format, export video in <i>MP4</i> , <i>Authentic Video (MJP)</i> or <i>VIGIL Server File Stream</i> format.
	Select <i>Print Still Image</i> to print the current frame or select <i>Print Data</i> to print the currently displayed data.
	Switch to <i>Full Screen</i> playback. Double-click or press Esc to return to windowed mode.
	Cues the video to a specific frame. Enter a frame number and click the <i>Cue</i> button.
	Opens a file selection window .

11.1 Top Menu Bar

Options from the various top menus are described below:

VIGIL DV Player	<ul style="list-style-type: none"> ■ About - Open the <i>About</i> window which provides DV Player copyright and version information.
File	<ul style="list-style-type: none"> ■ Open File... - Open a single file for playback. This will replace the currently active playback file. ■ Close All - Close all open playbacks.
Video	The <i>Video</i> menu list all available playback controls with keyboard shortcuts listed. The user also has the ability to toggle Real-time Authentication on or off. When enabled, real-time authentication will display an x across the viewer whenever a tampered file is detected during playback of an 3xLOGIC Authentic video (.mjp) file.
FPS	<ul style="list-style-type: none"> ■ Play at Recording FPS - Playback files using the recording's FPS. ■ Play at User Assigned FPS - Playback files using a custom, user-assigned FPS. ■ Max Full FPS Channels - Enter the maximum number of permitted channels to run a t full FPS simultaneously.
Data	<p>The <i>Data</i> menu contains a number of option related to playback file POS/ATM Data and on-screen display of POS entries:</p> <ul style="list-style-type: none"> ■ POS/ATM Search - Open the POS/ATM Search window. See "POS Receipt View and POS Search" on the facing page ■ Toggle On-Screen Display - Toggle the On-screen Display of POS Receipt on or off. ■ Columns - Select the visible POS Receipt columns for OSD. ■ Dwell Time - Select the amount of time a POS item remains in the on-screen display. The default dwell time is set to <i>Infinite</i>. ■ Font Size - Select the OSD Font Size. ■ Number of Lines - Select the maximum amount of POS item lines to display in OSD. ■ Export... - Export the selected playback file's POS data to the local system (.txt format).

Help	The help menu contains the menu search option. Use this feature to search for items located in the top menus.
-------------	---

11.2 POS Receipt View and POS Search

When a .mjp clip is exported with embedded POS data, the file can be played back in DV Player and will feature a POS Data receipt view built-in to the right-side of the DV Player UI.

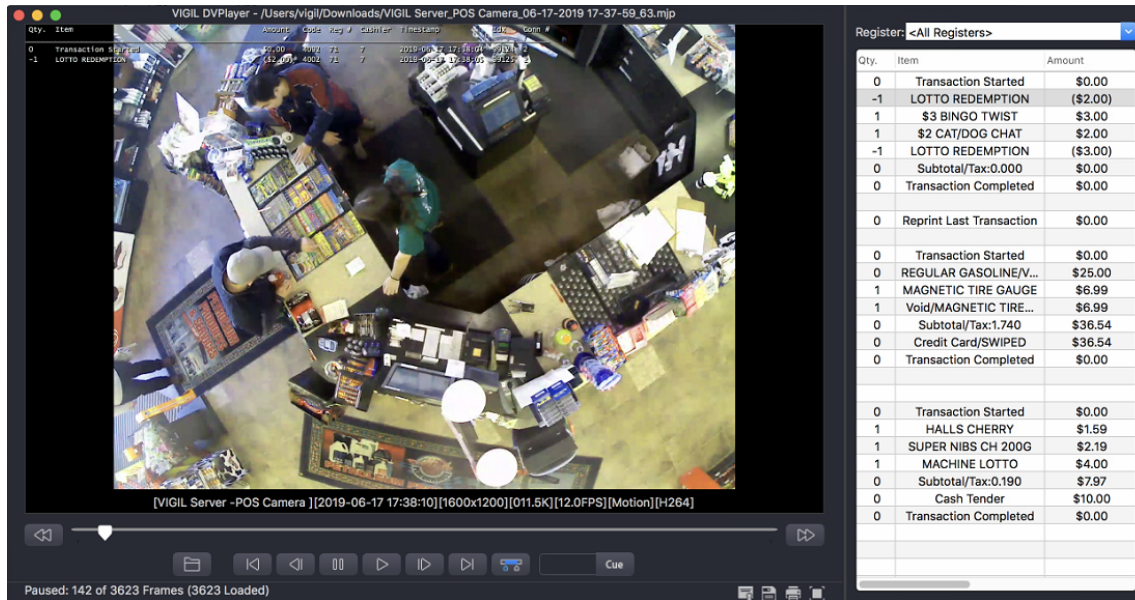


Figure 11-2:VIGIL DV Player - Embedded POS/ATM Receipt View

Double-click an entry in the receipt to be instantly taken to that item's corresponding portion of the footage.

To search through available POS data, click the *Data* top menu and select the *POS/ATM Search* option. Use the POS/ATM search function to locate items of interest within the .mjp playback clip.

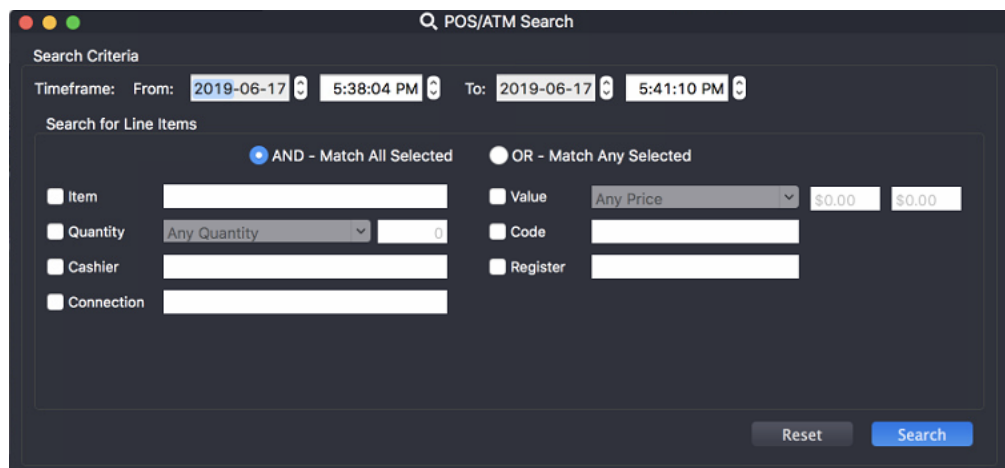


Figure 11-3:VIGIL DV Player - POS/ATM Search

The DV Player POS/ATM Search feature functions identically to standard POS/ATM search in VIGIL Server or VIGIL Client. This search feature is not integrated with the VIGIL POS database and will only return results from within the current .mjp clip(s).

11.3 Marking and Exporting Footage

To narrow down long portions of footage, DV Player can mark and export smaller sub-ranges of a larger playback clip. To markup and export a footage sub-range:


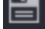
1. Begin playing the original playback file.
2. When you reach the frame where you would like to begin your sub-range, click the **Mark Footage**  button. The footage will continue playing.
3. When you have reached the frame where you would like to end the sub-range, click the **Mark Footage** button again. The sub-range will be highlighted in blue on the scrub bar, between the sub-range markers.



Figure 11-4:Marked Sub-Range

4. Once the appropriate sub-range has been marked, click the **Export**  and select an available video format (MP4, Authentic MJPEG or FileStream) to export the marked sub-range. A file browser will load where you can select the export destination.

Export progress will be displayed on-screen.

12 Contact Information

3xLOGIC has offices in Victoria BC, Canada and in Westminster, Colorado, USA. Please visit our 3xLOGIC web site at www.3xlogic.com. Please contact us by e-mail at helpdesk@3xlogic.com (technical support), or using the following contact information:

3xLOGIC Technical Support:

Toll Free: (877) 3XLOGIC

(877) 395-6442

Email: helpdesk@3xlogic.com

Website: www.3xlogic.com

3xLOGIC USA Main Office:

290-12000 Pecos Street

Westminster, CO 80234

United States. (303) 430-1969

3xLOGIC

VIGIL