

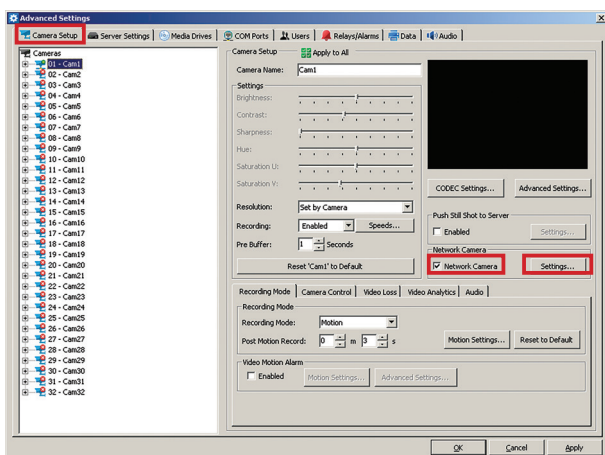
## VISIX IP Setup Utility – Quick Guide

The **VISIX IP Setup Utility** is a robust utility engineered to help guide you through the process of setting up your VISIX IP cameras. Below is a step-by-step process describing how to use it.

**STEP 1 –** Open **VIGIL Server** and click “**Settings**” from the **top toolbar**. This will launch the **Advanced Settings** window.

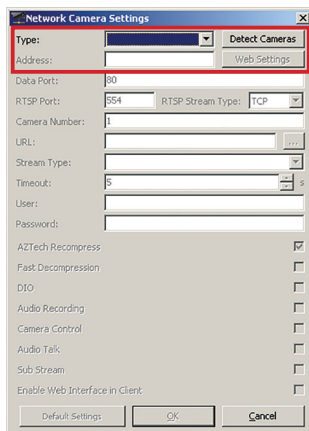
**STEP 2 –** On the **Camera Setup** tab, select the Channel you want to add a Network Camera to. Now select the checkbox “**Network Camera**”. The Network Camera Settings window will open after checked.

**NOTE:** You do not have to click the “**Settings**” button after checking the box. Checking the box will automatically open the settings.



**STEP 3 –** For “**Type**”, if the box is “**<blank>**” click the “**Detect Cameras**” button. If not please select “**VISIX-IP**” from the drop down menu, then click “**Detect Cameras**”.

The Utility searches for and identifies all MAC Addresses corresponding to any VISIX IP cameras currently connected to your network. From here you can discover and change any of the IP Addresses assigned to any of your VISIX IP cameras.



**STEP 4 –** Confirm/Change the IP Address assigned to your VISIX IP camera.

To change an IP Address for any of your VISIX cameras, click on the camera you want to modify in the **“Select Online Devices”** then click on the **“Change IP Address”** button.

**NOTE:** There is a new list that shows the VISIX cameras that are already setup on your VIGIL Server.

**1. Select Online Devices**

Device Type	IP Address	Port Number	Serial Number	Mask
001 V6-2A-2WD-V	10.1.13.45	80	E3801723	255.255.224
002 V6-2A-2S-R1AWO	10.1.13.64	8000	20140505CCWR463251156	255.255.248
003 V6-2A-2S-2WD	10.26.167.87	80	F40093283	255.0.0.0
004 V6-2A-2S-2WD	10.1.12.102	8000	20110228BWR402733377	255.255.248
005 V6-1-3MP-P1R1012	10.1.13.103	8000	0130220CCSR41697856A	255.255.248
006 V6-2A-2S-2WD	10.1.13.104	8000	20111008BWR405169113	255.255.248
007 V6-2A-2S-2WD	10.1.13.107	8000	002081104-HC-W6403778409WC	255.255.248
008 V6-2A-2S-2WD	10.1.13.110	8000	20111008BWR405169056	255.255.248
009 V6-1-3MP-P1R1	10.1.11.127	90	66088748	255.255.248
010 V6-2A-2S-2WD	10.1.12.127	8000	01405058BWR463250404B	255.255.248

**2. Configure IP Address**

Serial Number: 20140505CCWR463251156      MAC Address: 44-19-56-3d-cc-a7

IP address: 10 . 1 . 13 . 64      Device Port: 8000

Subnet mask: 255 . 255 . 248 . 0      User Name: admin

Default Gateway: 10 . 1 . 10 . 254      Password: \*\*\*\*\*

DNS Server: . . .

**Change IP Address**      **Save IP Address**      **Cancel IP Address Change**

**Special Function: Reset To Default Password**

Password:      **Reset**      **Save to VIGIL**      **NEXT**      **Cancel**

From here you can view and change: **IP Address**  
**Subnet Mask**  
**DNS**

Most of this information is pre-populated by your system.

It is important that you click on **“Save IP Address”** after you view/change any of your settings. Be sure to have the proper username and password for the camera.

Now click on **“OK”** to confirm that your settings have been saved.

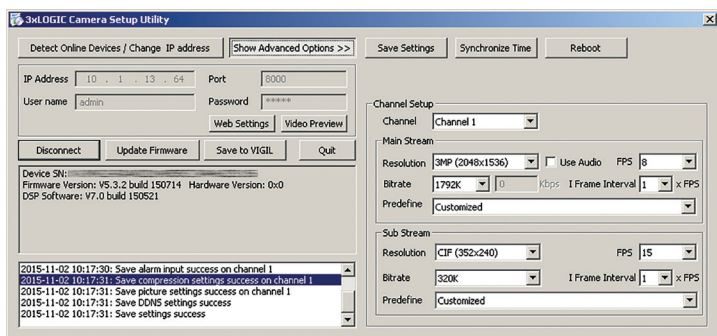
Now click on **“Next”** to view additional settings for your cameras, or click **“Save to VIGIL”** to finish setting up the camera.

**STEP 5 –** From this screen, you can:

- Detect Online Devices**
- Change IP Address**
- Update Firmware\***
- Save Settings**
- Save to VIGIL**
- Quit**

*\* Contact 3xLOGIC Customer Support (303.430.1969) if you have questions regarding firmware updates.*

To view/change camera settings, click on **“Show Advanced Options”**.



**STEP 6 –** Confirm the Settings for your VISIX IP camera.

From here, you can set/view:

**Resolution**  
**Bitrate**  
**Frames Per Second (FPS)**  
**I-Frame Intervals**  
**Use Audio**  
**Reboot Camera**  
**Sync Camera Time to Server Time**

**Resolution** – This will allow you to see the resolutions (minimum and maximum). Select from the list provided the resolution best suited for your application.

**Bitrate** – This enables you to tailor the amount of bandwidth the camera will use to communicate back to the DVR. The higher the bitrate, the more bandwidth that will be used, lowering the days of retention you will have. Typically the higher the resolution, the higher the bitrate necessary to support that resolution. The exception to this rule would be if you have your FPS set low (e.g. 2 FPS) then you might use a more conservative bitrate (e.g. 1024K).

**Frames Per Second (FPS)** – This allows you to see/set the Frames Per Second you want your camera to record at.

**I-Frame Interval** – I Frames (Index Frames) Interval can be set lower than the Frames Per Second allowing you to conserve memory when saving your video files. While this setting is application-specific, typically this interval is set to 1 x FPS.

**Use Audio** – Click on this checkbox if you want to enable Audio capture (camera-dependent).

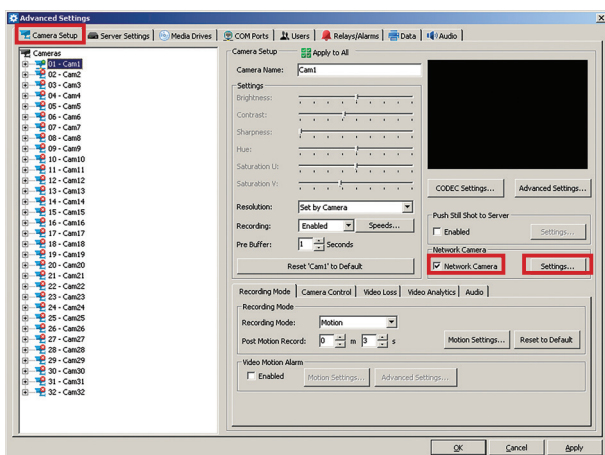
## VISIX IP Setup Utility – Quick Guide

The **VISIX IP Setup Utility** is a robust utility engineered to help guide you through the process of setting up your VISIX IP cameras. Below is a step-by-step process describing how to use it.

**STEP 1 –** Open **VIGIL Server** and click “**Settings**” from the **top toolbar**. This will launch the **Advanced Settings** window.

**STEP 2 –** On the **Camera Setup** tab, select the Channel you want to add a Network Camera to. Now select the checkbox “**Network Camera**”. The Network Camera Settings window will open after checked.

**NOTE:** You do not have to click the “**Settings**” button after checking the box. Checking the box will automatically open the settings.



**STEP 3 –** For “**Type**”, if the box is “**<blank>**” click the “**Detect Cameras**” button. If not please select “**VISIX-IP**” from the drop down menu, then click “**Detect Cameras**”.

The Utility searches for and identifies all MAC Addresses corresponding to any VISIX IP cameras currently connected to your network. From here you can discover and change any of the IP Addresses assigned to any of your VISIX IP cameras.

