

VISIX™ 3MP IP Outdoor Dome Camera

This three (3) megapixel IP camera from 3xLOGIC provides high-definition video at a full 2048 x 1536 pixels for outdoor video surveillance applications requiring superior clarity and detail. It is ideal for locations such as schools, government, hotels, banks, museums and supermarkets.

This high-definition camera is packed with all the features you might need for nearly any application including: Motorized lens, intrusion detection; weather and impact protection; SD/SDHC/SDXC card slot for local recording; motion detection; low-light day/night functionality; and compatibility with a wide variety of standardized network protocols.

The convenient and aesthetically pleasing dome camera format allows unobtrusive and easy installation in a wide variety of areas. In addition, this camera is designed to continue functioning at top performance at temperatures as low as -30°C (-22°F) and as high as 60°C (140°F) allowing a wide range of applications.

It comes standard with a 2.8-12mm vari-focal lens providing support for most applications. Day / Night operation allows use in varying lighting conditions down to 0.1 lux without the need for electronic gain providing better night time video.

Dual streaming permits recording at the highest quality while allowing fast live viewing from anywhere in the world regardless of available bandwidth. In addition, with full support for both variable bit rate and variable frame rate, the quality of each stream can be matched to available bandwidth for the most effective video quality possible.

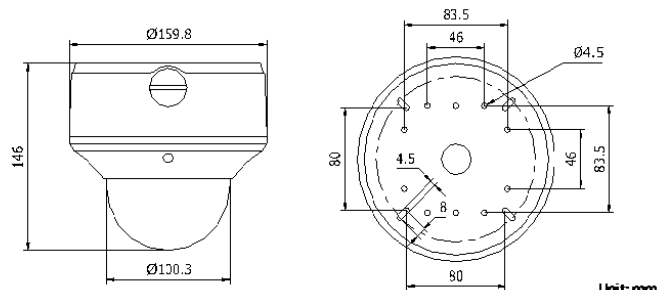
When coupled with the VIGIL Series of digital video recorders and Video Management System (VMS) software from 3xLOGIC, superior point-to-point hardware compression and decompression allows for maximum performance of streamed live video providing better video quality, more concurrent streams and a lower overall hit to CPU performance.



Key Features and Benefits	
Lens	2.8mm-12mm
Resolution (Megapixels)	3
2048 x 1536 Resolution	✓
Variable angle of view (91.2° - 28.3°)	✓
Infrared (Low-Light/No-Light)	✓
Dual Streams	✓
H.264/MPEG4/MJPEG Compression	✓
Weather & Impact-Resistant	✓
Motorized Focus Lens	✓

CAMERA

Image Sensor:	1/3 inch Progressive Scan CMOS
Lens:	2.8-12mm @ F1.4 Angle of view: 91.2-28.3° motorized
Min. Illumination:	0.1 Lux @ (F1.2) Auto Gain Control on 0.14 Lux @ (F1.4) Auto Gain Control on 0 lux with IR
Auto Iris:	DC drive
Day/Night:	IR cut filter with auto switch
IR Range:	Up to 30 meters
Shutter Times:	1 second to 1/100,000 seconds
Angle Adjustment:	Pan: 0° - 355°, Tilt: 0° - 75°, Rotation: 0° - 355



COMPRESSION STANDARD

Video Compression:	H.264/MPEG-4/MJPEG
Video Bit Rate:	32 Kbps - 16 Mbps
Audio Compression:	G.711, G.726, MP2L2
Dual Streams:	Yes

IMAGE

Max. Image Resolution:	2048(H) x 1536(V)
Frame Rate:	20 fps (2048x1536) 30 fps (1920x1080) 30 fps (1280x720)

FUNCTIONS

Alarm Triggers:	Intrusion detection, Defocus detection, Motion detection, Face detection, Dynamic analysis, Tampering alarm, Network disconnect, IP address conflict, Storage exception
Local Storage:	Built-in SD, SDHC, SDXC card slot, up to 64GB
Security:	User Authentication, Watermark, IP address filtering, anonymous access, reset
Protocols:	TCP/IP, HTTP, DHCP, DNS, DDNS, NTP, RTP, RTSP, PPPoE, SMTP, SNMP, HTTPS, FTP, ICMP, UPnP, IGMP, 802.1X, QoS, IPv6, Bonjour
System Compatibility:	ONVIF, PSIA, CGI

PHYSICAL

Working Temperature:	-30°C - 60°C (-22°F - 140°F); Humidity 95% max (non-condensing)
Weather protection:	IP66
Impact Protection:	IEC60068-2-75Eh, 50J, EN50102, up to IK10
Dimensions (inches):	6.29" x 5.75"
Dimensions (mm):	159 x 146
Weight:	4.62 lbs. / 2100 g

ELECTRICAL

Power Supply:	24 VAC + - 10%, PoE (802.3af)
Power Consumption:	13W

INTERFACE

Communication:	1 RJ45 10M/100M Ethernet port
Video Output:	1 Vp-p composite output (75 Ω/RCA)
Alarm Input:	2
Alarm Output:	2
Audio Input:	1-ch Mic in/Line in
Audio Output:	1-ch Line Out

WARRANTY

Three (3) Year Return to Depot Parts and Labor Warranty

CERTIFICATIONS

FCC, CE, UL

PART NUMBER

VX-3M-OD2-RIAWD:	VISIX 3MP IP Outdoor Dome Camera
-------------------------	----------------------------------

RECOMMENDED MOUNTS

VX-PM-OD2:	Pendant Mount Adaptor
VX-WM-OD2:	Wall Mount Adaptor
VX-POLE:	Pole Mount Adaptor
VX-CM:	Corner Mount Adaptor
VX-WMJ-OD2:	Wall Mount Adaptor with Junction Box