

## VIGIL Central Management v11.5

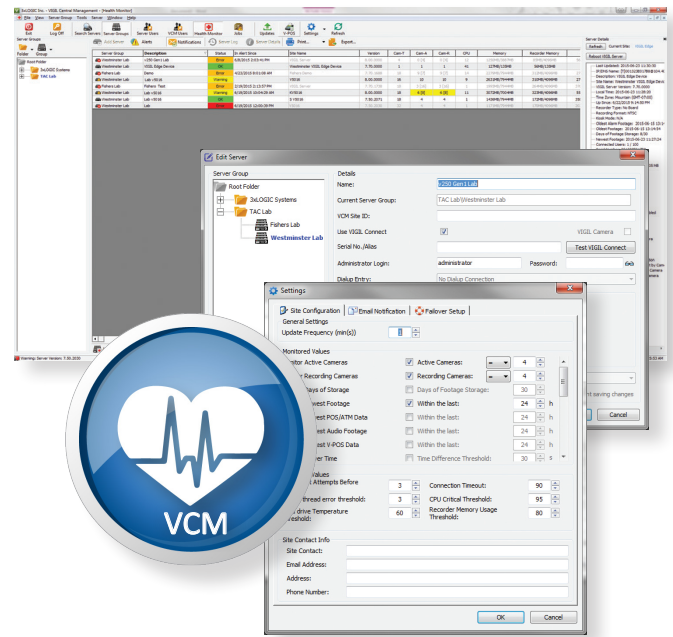
VIGIL Central Management (VCM) provides the ability to monitor the status of VIGIL Servers and V-Series cameras. Designed with the integrator in mind, VCM allows you to proactively inform your end users of any potential health concerns with their VIGIL Servers or cameras.

Every integrator has had to have that awkward conversation: "We're sorry, but we don't have video of the incident because the camera has been down for a month." With VCM, you will know when the status of a customer's VIGIL Server or cameras change, allowing you to take immediate action to resolve any potential issues. Created to add value in any scenario, VCM can be deployed for a single, enterprise-level project or can manage thousands of single or multi-location end users on the same system. Introduced in VIGIL VCM 11.5 are improved email alerts for data categories (video, audio, POS/ATM, audit), several new monitoring criteria including "Media Server Version" and "NVR Serial Number" as well as improvements to the VCM Client UI such as persistent column ordering and width for individual users.

VCM can reside anywhere: physical or virtual server; inside or outside of an end-user firewall; or, hosted by 3xLOGIC in the cloud.

Contact us today for a product demonstration:

■ 1.877.3XLOGIC



## Features

- **Health Monitoring** - Monitor the health of your 3xLOGIC VIGIL appliances:
  - ▶ CPU Utilization
  - ▶ Number of Active OR Recording Cameras
  - ▶ Video footage data ranges
  - ▶ Storage capacity and days of video and audio storage
- **Remote Jobs** - Remotely deploy software updates and configuration changes with the ability to suspend and resume failed or stuck jobs
- **User Management** - Centrally control Server users and their permissions on any or all connected Servers
- **Manage VIGIL Client** - Dynamically populate VIGIL Client's Server list
- **Server Health Alerts** - Receive warning notification on system health through VCM Client or via text/email
- **Thumbnails** - Pull camera snapshots to check field-of-view without logging into every Server and camera
- **Server Settings** - Backup and store Server configuration files
- **Versatility** - Host VCM on a local or remote physical server, virtual machine, or 3xLOGIC cloud

## Recommended Hardware Requirements

Requirement	Small Network (1-500 VIGIL Servers)	Mid-Range Network (500-1000 VIGIL Servers)	Enterprise Network (1000+ VIGIL Servers)
<b>CPU:</b>	Intel® Core™ i3 Processor	Intel® Core™ i5 Processor	Intel® Core™ i7 Processor
<b>RAM:</b>	4GB	8GB	16GB
<b>HDD:</b>	500GB SATA (Minimum 500MB required for install)	500GB SATA (Minimum 500MB required for install)	500GB SATA (Minimum 500MB required for install)
<b>Database (Optional):</b>	MSSQL2014 Express (or other SQL2014 variant)	MSSQL2014 Express (or other SQL2014 variant)	MSSQL2014 Express (or other SQL2014 variant)
<b>OS:</b>	Windows 7, 8.1, 10	Windows 7, 8.1, 10	Windows 7, 8.1, 10

### Minimum System Requirements for VCM Client:

<b>CPU:</b>	Intel® Core™ i3 Processor
<b>RAM:</b>	4GB (8GB if running Virtual Switch)
<b>GPU:</b>	PCI Express 2GB (4GB Recommended)
<b>HDD:</b>	40GB

## Part Numbers

<b>VGL-VCM-Server</b>	Server-based VCM
<b>VGL-VCM-H</b>	Hosted VCM
<b>VGL-VCM-B-MIN</b>	Base Hosted VCM