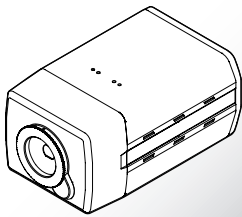


3XLOGIC



VISIX VX-2M-F-AW 2MP Fixed Full-Body Camera

Quick Start Guide


Ver. 1.0 / 2020.07

Before installing and using the camera, please read this manual carefully.
Be sure to keep it handy for future reference.




- a. This device complies with Part 15 of the FCC Rules. Operation is subject to the following two conditions:
1. This device may not cause harmful interference.
2. This device must accept any interference received, including interference that may cause undesired operation.
Note: This equipment has been tested and found to comply with the limits for a Class A digital device, pursuant to part 15 of the FCC Rules. These limits are designed to provide reasonable protection against harmful interference when the equipment is operated in a commercial environment. This equipment generates, uses, and can radiate radio frequency energy and, if not installed and used in accordance with the instruction manual, may cause harmful interference to radio communications. Operation of this equipment in a residential area is likely to cause harmful interference in which case the user will be required to correct the interference at his own expense.
- b. This device complies with CAN ICES-3 (A)/NMB-3(A)
c. This device is UL and UL/C E467574 (Safety) certified.
d. This device complies with CE 2014/30/EU – EMC Directive, 2015/863/EU RoHS3 as part of 2011/65/EU RoHS
e. This device complies with WEEE


Safety Information




CAUTION
RISK OF ELECTRIC SHOCK.
DO NOT OPEN



CAUTION:
TO REDUCE THE RISK OF ELECTRIC SHOCK, DO NOT REMOVE COVER (OR BACK) NO USER SERVICEABLE PARTS INSIDE. REFER SERVICING TO QUALIFIED SERVICE PERSONNEL.

 This symbol indicates that dangerous voltage consisting a risk of electric shock is present within this unit.

 This exclamation point symbol is intended to alert the user to the presence of important operating and maintenance (servicing) instructions in the literature accompanying the appliance.

WARNING

To prevent damage which may result in fire or electric shock hazard, do not expose this appliance to rain or moisture.

WARNING

- Be sure to use only the standard adapter that is specified in the specification sheet. Using any other adapter could cause fire, electrical shock, or damage to the product.
- Incorrectly connecting the power supply or replacing battery may cause explosion, fire, electric shock, or damage to the product.
- Do not connect multiple cameras to a single adapter. Exceeding the capacity may cause abnormal heat generation or fire.
- Securely plug the power cord into the power receptacle. Insecure connection may cause fire.
- When installing the camera, fasten it securely and firmly. A falling camera may cause personal injury.
- Do not place conductive objects (e.g. screw drivers, coins, metal things, etc.) or containers filled with water on top of the camera. Doing so may cause personal injury due to fire, electric shock, or falling objects.

- Do not install the unit in humid, dusty, or sooty locations. Doing so may cause fire or electric shock.
- If any unusual smells or smoke come from the unit, stop using the product. In such case, immediately disconnect the power source and contact the service center. Continued use in such a condition may cause fire or electric shock.
- If this product fails to operate normally, contact the nearest service center. Never disassemble or modify this product in any way.
- When cleaning, do not spray water directly onto parts of the product. Doing so may cause fire or electric shock.

CAUTION

- Do not drop objects on the product or apply strong shock to it. Keep away from a location subject to excessive vibration or magnetic interference.
- Do not install in a location subject to high temperature low temperature or high humidity. Doing so may cause fire or electric shock.
- If you want to relocate the already installed product, be sure to turn off the power and then move or reinstall it.
- Remove the power plug from the outlet when there is a lightning. Neglecting to do so may cause fire or damage to the product.
- Keep out of direct sunlight and heat radiation sources. It may cause fire.
- Install it in a place with good ventilation.
- Avoid aiming the camera directly towards extremely bright objects such as sun, as this may damage the image sensor.
- Apparatus shall not be exposed to dripping or splashing and no objects filled with liquids, such as vases, shall be placed on the apparatus.
- The Mains plug is used as a disconnect device and shall stay readily operable at any time.


Important Safety Instructions

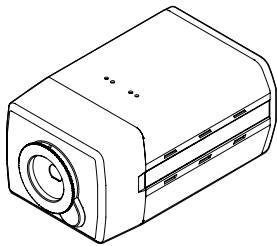
WARNING

- Read these instructions.
- Keep these instructions.
- Heed all warnings.
- Follow all instructions.
- Do not use this apparatus near water.
- Clean only with dry cloth.
- Do not block any ventilation openings. Install in accordance with the manufacturer's instructions.
- Do not install near any heat sources such as radiators, heat registers, or other apparatus (including amplifiers) that produce heat.
- Do not defeat the safety purpose of the polarized or grounding-type plug. A polarized plug has two blades with one wider than the other. A grounding type plug has two blades and a third grounding prong. The wide blade or the third prong is provided for your safety. If the provided plug does not fit into your outlet, consult an electrician for replacement of the obsolete outlet.
- Protect the power cord from being walked on or pinched particularly at plugs, convenience receptacles, and the point where they exit from the apparatus.
- Only use attachments/accessories specified by the manufacturer.
- Use only with cart, stand, tripod, bracket, or table specified by the manufacturer, or sold with the apparatus.
- Unplug this apparatus when a cart is used. Use caution when moving the cart/apparatus combination to avoid injury from tip-over.
- Refer all servicing to qualified service personnel. Servicing is required when the apparatus has been damaged in any way, such as power supply cord or plug is damaged, liquid has been spilled or objects have fallen into the apparatus, the apparatus has been exposed to rain or moisture, does not operate normally, or has been dropped.



Step 1. Product & Accessories

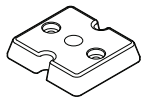
 The C-Lens and CS-Lens are not included in the product package. C-Lens and CS-Lens is optional.



Camera



C-Mount Adaptor



Camera Holder Mount



Camera Holder Screw-2pcs

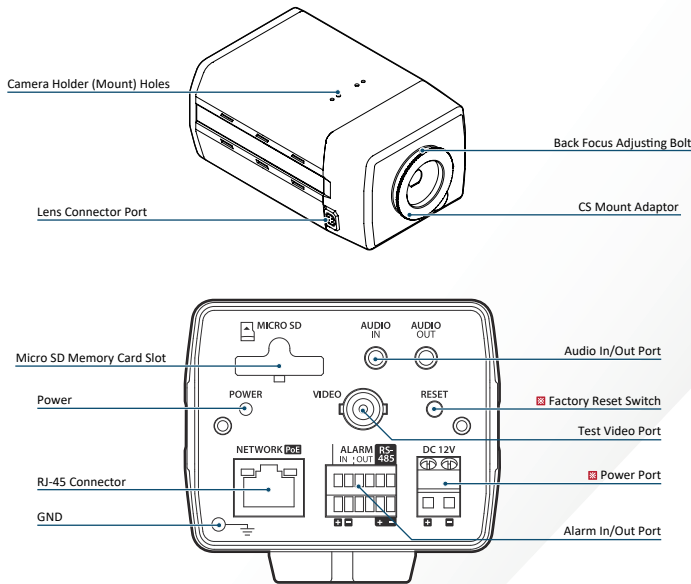


Quick Manual



Wrench

Step 2. Part Name



WARNING

Factory Reset Switch

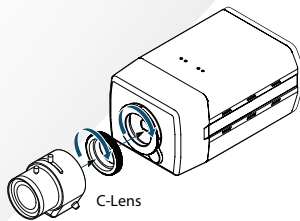
Resetting the camera IP address, subnet mask, gateway address etc. requires the use of the IP Installer software application.

Power Port

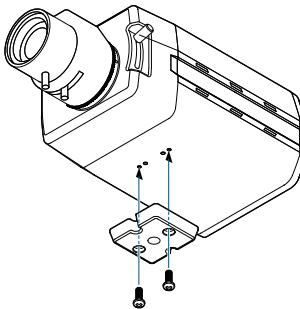
Be careful not to reverse the polarity when you connect the power cable. You can also use a router featuring PoE (Power over Ethernet) to supply power to the camera.

Step 3. Installation

 Disconnect the power before proceeding.



C-Lens



1 Mounting the Lens

- CS-Lens: Turn the optional CS-Lens clockwise to insert it.

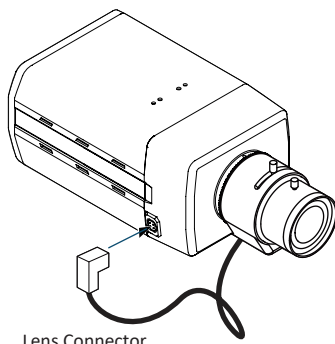
- C-Lens: Turn the C Mount adaptor clockwise to insert it and do the same with the C-Lens.

2 Fix the Camera Holder

By tightening the two camera holder screws provided, attach the camera holder to the camera.

3 Connection Lens Connector

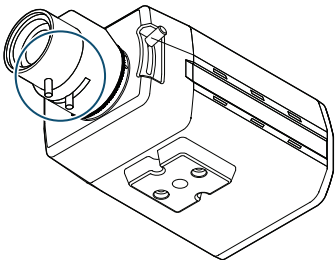
Connect the lens control cable to the lens connector.



Lens Connector

4 Adjusting Zoom and Focus

By turning screws of the lens, adjust the Zoom and Focus after setting the position and view angle of camera.



Step 4. Cabling

1 Network Connection

Connect the Straight through or crossover cable.

2 Monitor

Connects to Video Output device such as a monitor using the BNC coaxial cable.

3 Power

Please check the power rating is correct.

Rate Power	Power Consumption	PoE
DC12V	3.7W	IEEE802.3af class2

4 Sensor/Alarm Input

Cable of the sensor/alarm input device should connect to + and - of the Terminal Block.

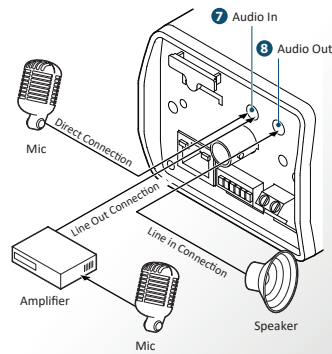
5 Relay Out

RO connects to alarm lights, siren or lamps. The sensor types are normal open and normal close.

6 RS-485

Connect [RS485 +,-] terminal to an external device. With RS485 you can control the pan / tilt of the camera.

⚠ GND connection is recommended for RS485 connection. If connection is not working properly, connect GND pin and set GND level between external device and camera.



7 Audio In

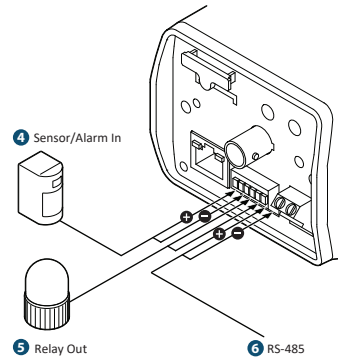
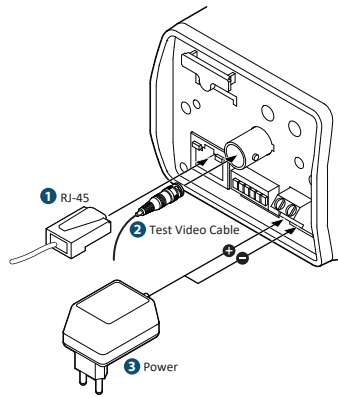
Connect the 'Audio In' port of the camera to the microphone directly or 'Line Out' port of the amplifier connected with microphone.

⚠ If the microphone is connected directly, the microphone with the embedded amplifier such as condenser mic. needs to be used.

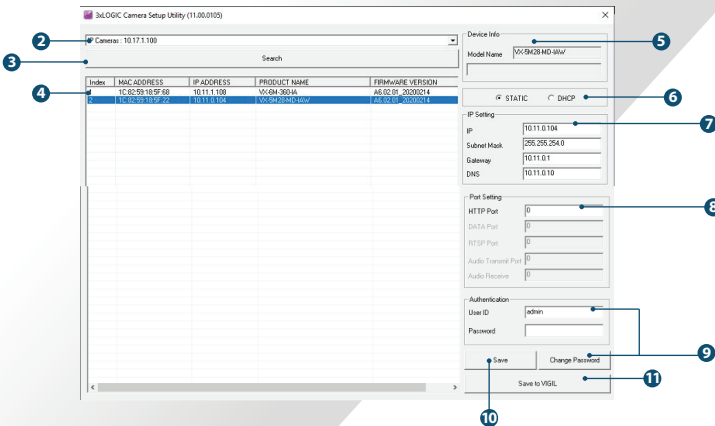
8 Audio Out

Connect the 'Audio Out' port of the camera to the 'Line In' port of the speaker.

⚠ VLC back channel : Audio is output through the audio output port when audio is input from a client (CMS) that supports RTSP back channel audio.



Step 7. IP Installer



6 Select the network type.

1 The default network type of the camera is DHCP mode.

1 If you have a DHCP server, it will automatically set the Camera IP.

1 If you do not have a DHCP server, Camera IP is set to 192.168.1.80 after one minute.

2 Input IP settings information when the network type is set to STATIC. Always click **Save** after changing IP Settings.

1 Default TCP/IP information

- IP: 192.168.1.80
- Subnet Mask: 255.255.255.0
- Gateway: 192.168.1.1
- DNS : 168.126.63.1

8 Change the port as necessary when the network type is set to STATIC.

1 A 'Port Forwarding' has to be set for external access to the camera.

1 Refer to the manual of the network hub for 'Port Forwarding' settings.

1 An additional change of HTTPS, RTSP port can be done at Web Viewer > Admin page.

9 Change Password.

1 Default ID / PW : admin / admin

⚠ The default user ID and password must be changed for security reasons. Video will not stream from the camera until the default admin password is changed. Enter the default credentials (**admin / admin**) and click **Change Password**. Enter and confirm a unique password, and click **OK** to complete the change.

⚠ The ID and PW will be set to default value when a 'factory reset' is performed on the camera.

- 1 Run the 3xLOGIC Camera Setup Utility
 - i. Download and install the latest version of the utility at www.3xlogic.com.
 - ii. Navigate to **Start > Programs > VIGIL > Utilities** and launch the VIGIL Firewall Utility. Create a firewall rule for **VISIXIPSetup-B Utility** if one has not already been created.
 - iii. Launch VIGIL Server, navigate to **Settings > Cameras**.
 - iv. Select the desired camera channel from the treeview.
 - v. Open Network Camera Settings and set the **Type** to **VISIX-IP-B**.
 - vi. Click the **Detect Camera** button. The utility will now launch.

- 2 Click on Network Adaptor selection Menu (NIC) after the utility deploys.
- 3 Select the NIC associated with your cameras then click on the **Search** button. Allow the utility time to identify cameras.
- 4 Select the desired camera.
- 5 The information of the selected camera will be shown in Device Info.

Step 6. Installing SD Card

1 Inserting an SD Memory Card

Insert the SD card by gently pushing the card into the slot, as shown in the diagram.

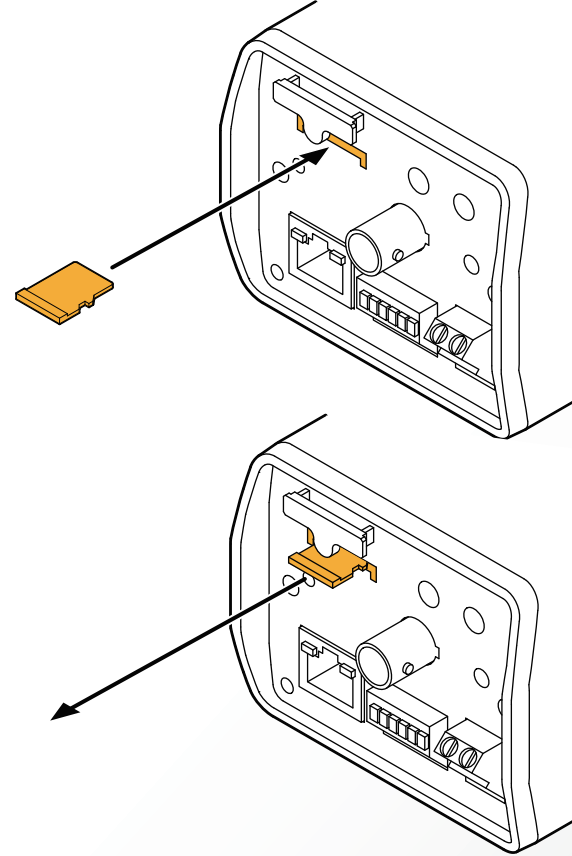
⚠ If the SD card will not insert, do not use force to insert the card. Check the card is in the correct orientation and retry. Using force to insert the card may cause damage to the camera or the SD Card.

2 Removing an SD Memory Card

Gently press down on the exposed end of the memory card as shown in the diagram to eject the memory card from the slot.

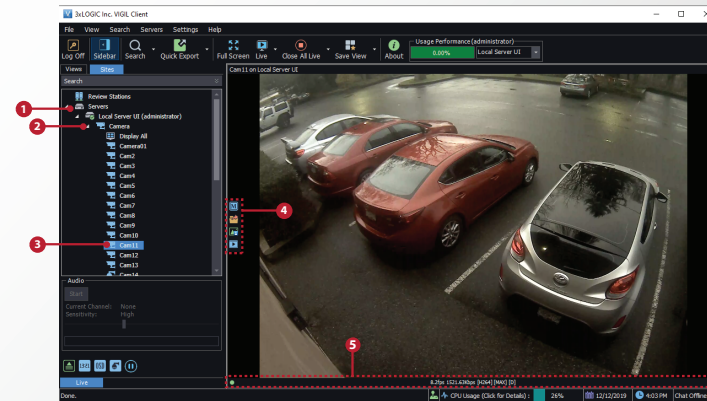
⚠ Pressing too hard on the SD memory card can cause the card to shoot out uncontrollably from the slot when released.

⚠ If you have saved data in the SD memory card, removing the SD memory card prior to setting record to OFF will cause damage to the data stored in the card.



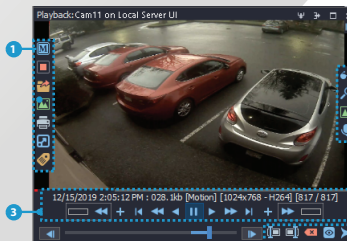
Step 8. Viewing Camera in VIGIL Client

After adding the camera to VIGIL Server, 3xLOGIC recommends VIGIL Client for viewing live and playback. Client's powerful tool set can be leveraged by users to thoroughly and quickly review camera footage and other data collected by a VIGIL Server. After adding a VIGIL Server to VIGIL Client, refer to the steps in this section for details on viewing the camera's footage in VIGIL Server.



- 1 After launching VIGIL Client, extend the **Servers** node located in the Sites tab treeview then double-click the desired VIGIL Server to reveal available devices and tools.
- 2 Expand the **Camera** node to reveal the VIGIL Server's cameras.
- 3 Double-click the desired camera. The camera's live stream will be automatically displayed in the viewing area.
- 4 Live Edge Controls instantly grant the user access to common tools such as Capture Still Image, Instant Replay and Stream Type Selection.
- 5 Stream information such as FPS rate, bitrate and CODEC type are listed when the cursor hovers over the bottom edge of the frame.

Select Instant Replay from the Live Edge Controls to open the last 5 minutes of footage from the camera or perform a playback search to review a custom time range of playback. A Playback viewer featuring the requested footage will deploy.



For further details on reviewing and exporting playback and other advanced features such as audio recording and two-way audio talk, POS Data OSD and more, please visit www.3xlogic.com and consult the product documentation library for VIGIL Client-related support documentation.

Disposal of Old Appliance



1. When this crossed-out wheel bin symbol is attached to a product it means the product is covered by the European Directive 2002/96/EC.
2. All electrical and electronic products should be disposed of separately from the municipal waste stream in accordance to laws designated by the government or the local authorities.
3. The correct disposal of your old appliance will help prevent potential negative consequences for the environment and human health.
4. For more detailed information about disposal of your old appliance, please contact your city office, waste disposal service or the shop where you purchased the product.